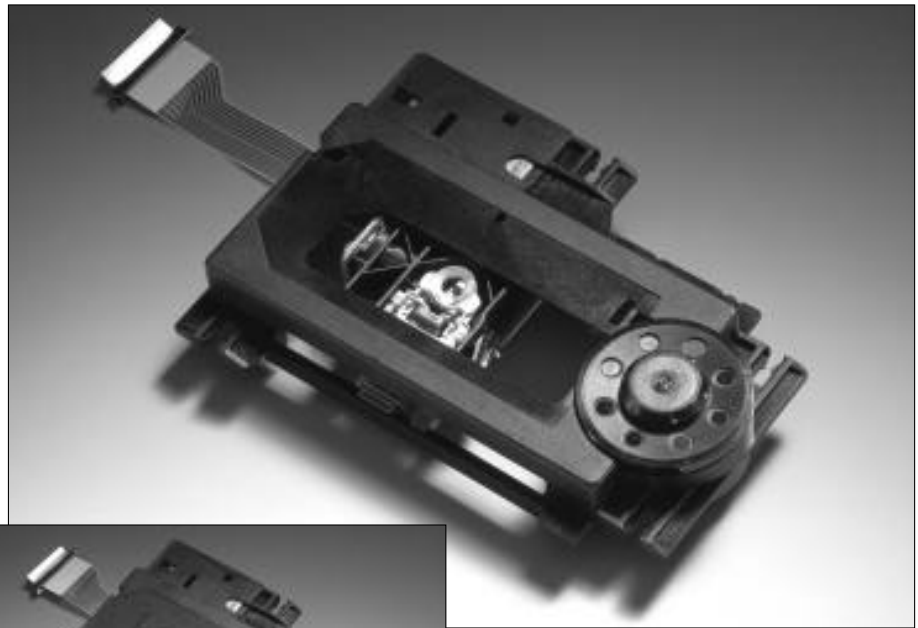




VAM1201 AND VAM1223

Economy mechanism for audio, video and games applications

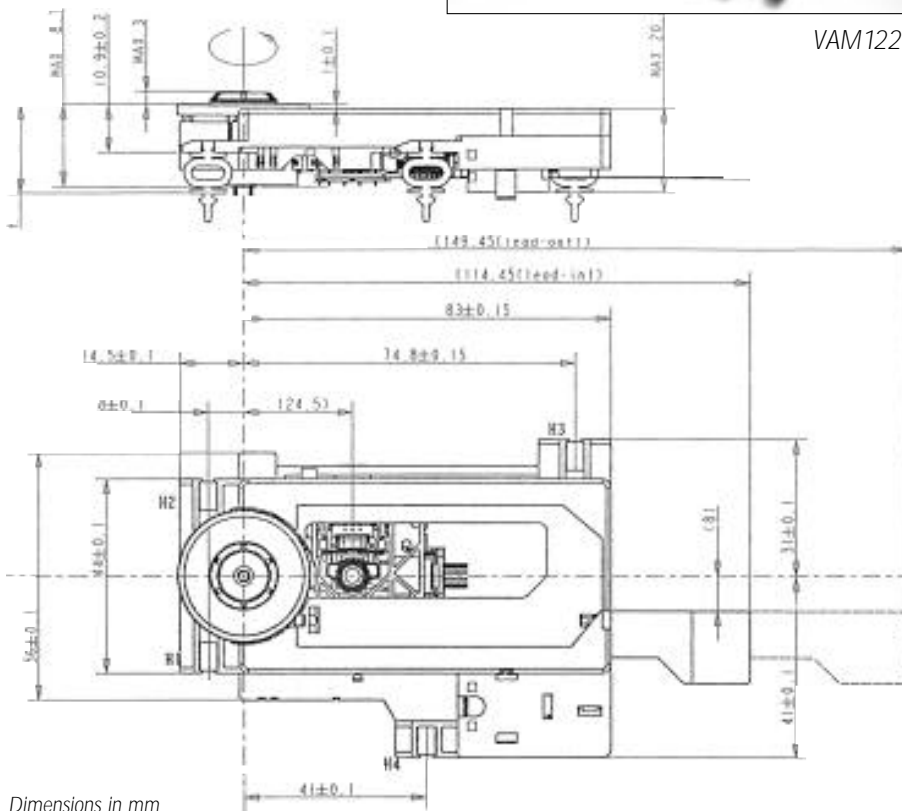
- Lightweight 3-beam LDGU with holographic pick-up, providing excellent thermal stability.
- Low-profile frame.
- Unique low-mass actuator for fast, accurate focusing and radial tracking.
- Reliable long-life DC motors.
- Top-loading version (VAM1223) with ornamental plate and ballclammer available.



VAM1201



VAM1223



Dimensions in mm

| VAM1201 & VAM1223 TECHNICAL DATA (typ. values) | |
|--|------------------|
| Disc motor | RF310T-11400 |
| Sledge motor | PPN 13 |
| Mech. sledge speed (3.5 V) | 13 mm/s |
| Moving mass actuator | 0.56 g |
| Focus error detection | Single Foucault |
| Focus resonance freq. | 30 Hz |
| Focus AC-sensitivity | 0.28 N/A |
| Focus DC-sensitivity | 0.8 mm/V |
| Focus resistance | 18 Ω |
| Radial error detection | 3-beam |
| Tracking resonance freq. | 49 Hz |
| Tracking AC-sensitivity | 0.32 N/A |
| Tracking DC-sensitivity | 0.35 mm/V |
| Tracking resistance | 18 Ω |
| Wavelength | 780 nm |
| Power intensity (obj. lens) | max. 0.5 mW |
| Numerical aperture | 0.45 |
| Lifetime | 5000 h (B10) |
| MTBF (100%) | 27000 h |
| Operational temp. range | 5 to 55 °C |
| Storage temperature range | -25 to 55 °C |
| Storage exposure | 70 °C (48 h) |
| Allowed impact | max. 100g (6 ms) |
| Vibration (2g/0.15 mm) | 10-150 Hz |