

THE HANDOUTS

The following handouts represent the store of clues that are accessible by the players. Some need to be actively sought out (newspapers, books and online material), others are presented at the appropriate junctures of the story (diaries), whilst others are displayed to represent certain key events (scenes). I've taken the liberty of listing each one and which episode they are most prevalent too. The ones listed as EP3X pertain to the Mission Mars variant scenario. EP2T ones represent an additional supplemental handout to fix travel travel issues.

TITLE	TYPE	EPISODE	PAGE	NOTES
Footballer Accident Report	Actively Sought	EP.1	page 68	
Brutal Slaying Report	Actively Sought	EP.1	page 68	
Swedish Tourist	Actively Sought	EP.1/4	page 68	
Local Feared Drowned	Actively Sought	EP.4	page 68	
Restorations	Actively Sought	EP.1	page 69	
Goddess & Greenman	Actively Sought	EP.1	page 70	
Pagan Calendar	Actively Sought	EP.1	page 71	
Oak & Holly King	Actively Sought	EP.1/2	page 72	
Mabon	Actively Sought	EP.1 to 4	page 72	
Fate of Fairies	Actively Sought	EP.4	page 73	
Mystery Note	Presented	EP.2T	page 74	
Wicca Ritual	Actively Sought	EP.2	page 75	
Herbal Code	Actively Sought	EP.2	page 75	
Book of Shadows	Actively Sought	EP.2	page 76	
Heather's Diaries	Presented	EP.4	page 78	
Ragnarok	Actively Sought	EP.4	page 80	
Wicca Definitions	Actively Sought	EP.2	page 81	
Fun Facts About Electricity	Actively Sought	EP.3	page 89	
Golden Era Spacetravel	Actively Sought	EP.3	page 92	
Science of Spacetravel	Actively Sought	EP.3	page 94	
Nippon II Log Files	Actively Sought	EP.3X	page 96	
Little Britain Log Files	Actively Sought	EP.3X	page 97	
Fun Facts About Mars	Actively Sought	EP.3X	page 98	
Mars Base Terror Report	Actively Sought	EP.3X	page 100	
Trial of Lord Barrow Report	Actively Sought	EP.2	page 100	
Barrowmere Village Map 2003	Displayed	EP.1	page 101	
Barrowmere Village Map 1944	Displayed	EP.2	page 102	
Barrowmere Village Map 2064	Displayed	EP.3	page 103	
Scenes 2003	Displayed	EP.1	page 104	
Barrowmere Cathedral Floorplan	Presented	EP.1	page 105	
Moon Goddess	Presented	EP.1	page 106	
Smithy Floorplan	Presented	EP.1	page 107	
Spare House Floorplan	Presented	EP.1 to 4	page 108	
Night Under Fire 1994 Scenes	Presented	EP.2	page 109	
World War II Scenes	Presented	EP.2	page 110	
Manor House Floorplan	Presented	EP.2	page 111	
Barrowmere Scenes 2064	Presented	EP.3	page 112	
Barrowmere Spaceport Floorplan	Presented	EP.3	page 113	
Alien Arrival/Barrows	Presented	EP.3/3X	page 114	
Festival of Strawbears Scenes	Presented	EP.3	page 115	
Bloody Note from Heather	Presented	EP.4	page 116	
Codex Illumination/Rave Stub	Presented	EP.4	page 117	
O'Reilly Farm Scenes	Presented	EP.4	page 118	
O'Reilly Farm Floorplan	Presented	EP.4	page 119	
The Seelie Court	Presented	EP.4	page 120	
The Asylum	Presented	EP.4	page 121	
Cotswold Map	Actively Sought	EP.4	page 122	
Chirac One Spacecraft	Presented	EP.3X	page 123	
Mars Scenes	Presented	EP.3X	page 124	
Nippon II Base Layout	Presented	EP.3X	page 125	
Little Britain Base Layout	Presented	EP.3X	page 126	
Locals Gallery	Displayed	EP.1 to EP.4	page 127	
Five Starting Characters	Presented	EP.1 to EP.4	page 135	
Three Extra Characters	Presented	EP.1 to EP.4	page 140	As per Time Travelling Troubleshooting

The Cotswold Times, Thursday April 17th 1957

LOCAL FOOTBALLER DIES IN CAR ACCIDENT

The town on Barrowmere has been in mourning this week after the tragic death of famed Blackburn Striker, Todd Blakehurst. On Sunday night, the sportsman was returning home in his brand new red Chevrolet, after scoring the winning goal in Blackburn's 3-1 F.A cup triumph. The car appeared to skid off the wet road near the village, rolling a number of times before careening into a large oak tree. Also present in the vehicle was his local fiancée, Margaret Willets. The woman is in a satisfactory condition in Bristol Hospital after fracturing several bones. Miss Willets is expected to make a full recovery.

The funeral for the footballer was held at Barrowmere Catholic Cathedral on Wednesday; a number of his former Blackburn teammates were in attendance and formed a guard of honor at the graveside. Blakehurst's Blackburn Rovers manager and mentor, John Regis, proclaimed the striker to be his best ever center-forward he has had the opportunity to coach, and regretted that his ongoing knee injuries prevented him from ever taking his rightful place in the England setup. Blakehurst played 101 league games for Blackburn and scored 45 goals. He died at the age of twenty-nine.

The Cotswold Times, Friday September 29th 1974

BRUTAL RITUAL SLAYING IN BARROWMERE

Tragic events unfolded in Barrowmere on Monday, after the body of local woman, Mavis Hinds, was found hanging in her farmhouse's smokehouse. The body was discovered after the late woman's son returned home from medical studies in Southampton. He later found his father clutching a shotgun to his head and threatening to fire it. Jack Hinds 47, was later taken into psychiatric care and is being assessed as to whether in his current mental state, he will be tried for the brutal slaying of his wife. The coroner's report has subsequently stated that the body of the woman had been slowly drained of blood and the arms and legs of the deceased were wrapped in twigs, vines and leaves. Speculation is rife as to whether this detail is consistent with pagan worship.

The Cotswold Times, Saturday December 15th 1991

SWEDISH TOURIST FOUND SLAIN ON GREEN

The body of Swedish tourist, Helga Helgstrom was found on Barrowmere Green on Friday morning. The grizzly find was stumbled upon by a local, who was out walking his dog upon the village green. The tourist had been reported missing some 48 hours earlier, after threats were made to her safety. Her boyfriend, Henrik Larsson, reports that a local woman proclaimed that Helga was in imminent danger if she stayed. The tourist had been spooked by the incident, but believed the woman in question to be mad, not dangerous. Local police authorities have stated that they are in the process of talking to the woman in question.

The body of the tourist was found naked with its arms firmly secured with thick rope. The coroner reports that a struggle took place and a series of bruises cover the torso, arms and legs. It has been reported that the victim may have been violated.

There are some similarities between this incident and the infamous slaying of a local farmer's wife, Mavis Hinds in 1974. Although police have ruled out a connection between the two cases, mainly because the suspected murderer in the 1974 case, Jim Hinds, has been in a mental asylum for over 15 years.

The Cotswold Times, Friday December 21st 1991

LOCAL WOMAN FEARED DROWNED

Police divers have scoured Barrowmere Estuary searching for the body of local mother, Heather Riley. Fears are held for the safety of the young woman after a number of personal items were found, left next to the river. The woman hasn't been heard of since Thursday, and police suspect foul play may be at work. Mrs. Riley, the wife of local blacksmith, Jack Riley has a young infant son. Police would not confirm as to whether the woman is the same person wanted in relation to the brutal slaying of Swedish tourist, Helga Helgstrom, although they would confirm that she was helping them with their inquiries. There is speculation to suggest a suicide note was left behind at the scene of the incident; Police refuse to comment at this early stage. Anyone with further information should contact their local police station.

RESTORATIONS: THE REMAKING OF BARROWMERE CATHEDRAL

Published by Gray Press 1965, author Harold Wilt

This extract comes from the 5th Chapter entitled: New Beginnings.

The strong pagan imagery of the Cathedral was essentially removed in 1953 by the renovations. The chief architect, Fredrick March, described the process as, “ridding the holy place of the taint of history”. By this allusion, it is understood that the architect was referring to legendary local firebrand preacher, Thomas Crowley, who the Cathedral was built in memorial of.



Thomas Crowley was a dispossessed gravedigger from London, who fled the city in the wake of the great fire and plagues that struck the metropolis in consecutive years (1665-1666). At this time, most folk considered these events as important portents leading up to the end of the world: a particular dark-ages obsession. Upon Crowley’s arrival in Barrowmere he was awestruck by the sheer beauty of the countryside. Especially, after living in the relative squalor of the Capital. His zeal for nature led to a religious conversion of sorts. He preached a mixture of protestant dogma and pagan ritual rites, heresy in the eyes of the protestant church. It is understood that locals harbored the lay preacher when church officials came to arrest him in 1671. Finally, after three years of brazen provocation by the errant lay preacher; the church was said to have hired assassins, who duly dispatched Crowley in his sleep in 1672.

After the preacher’s death, the locals erected a small wooden church on the site of his deathbed. The assassination by the protestant authorities had galvanized the local community. Eventually, a Gothic style stone cathedral was built on the site where the wooden one stood. It included many notable features taken from both Catholic and Pagan iconography. The foremost of the pagan influences were the innumerable reliefs of the Green Man and other forest dwelling creatures. The perimeter of the site also bore five black Aurg’ Gak (colloquially known as ‘black stones’) standing stones that were carted in at considerable expense from Wales. These stones were brazenly laid out in a pentagram pattern.

The renovations in 1953 were a deliberate attempt to remove some of the more obvious pagan references from the site, to accommodate the rites of the Catholic Church and appease their sensibilities. This contentious act of conversion from Protestant to Catholic observance in Barrowmere was only possible because of the comparative freedoms won in the wake of the war – the emerging secular society. It appears that the locals had long thought about changing their allegiance, mainly because of the ongoing hostilities between the locals and the Protestant authority.

Numbered amongst the changes were the removal of the gargoyles from the roof and spire, the installation of wooden confessionals over the crypt area and the blocking off of a wartime bomb shelter that used to connect the church’s crypt to Barrow Manor. Three of the black standing stones had previously been removed by the locals when the church was extended in the early 1880s; the distinctive black stones were subsequently incorporated into the design of the church’s crypt area.

THE GODDESS & THE GREEN MAN

An extract from the website <http://www.wicca-wares-to-go.com> by *Cecily Moon*

In Neo-Pagan witchcraft, the Goddess is the central figure of worship and of the Craft. She is the Great Mother who represents fertility; she is the wellspring of all life. She is both the creator and destroyer; she is the Queen of Heaven and she is the Moon. She possesses magical powers and she is the progenitor of emotion, intuition and psychic faculty. She has three cyclic aspects that are related directly to the phases of the moon: The Maiden (waxing), The Mother (full) and The Crone (waning). These phases are representative of the innocence of youth; pregnancy and fertility; and menopause leading to wisdom, death and rebirth: a representation of the entire life cycle.

The Divine Force within the Goddess is believed to be genderless, but within the Universe, it manifests in both male and female forms.

The religion of the Goddess is both polytheistic and monotheistic. The Goddess is polytheistic because she has so many different names and forms. However, she is monotheistic because they are all manifestations of the single Great Mother: a process called syncretism.



The Goddess is the feminine force, whereas the God is the masculine. Neither can exist without the other, they are also both equal. The Goddess gives life and gave birth to the world: The God is her lover, consort, Son of the Goddess (Mabon), and Lord of the mysterious Underworld. He is a manifestation of the life force, an impregnator, and hunter.

Goddess worship can be found in most primitive cultures. Cro-Magnon cave paintings depict women giving birth; the Goddess appears to have been the patroness of the hunt and protector of wild things. Goddess images exist in Egyptian, Sumerian, African cultures and throughout European history. Some researchers speculate that the devotion shown to Mother Mary in Christianity, in some respects, imitates pagan-style veneration of the Goddess. Mary is also the mother of one of God's three manifestations - similar to that of the pagan myth.

The Green Man is a pagan representation of the godhead. His image can be seen in many Catholic churches throughout Europe. The Green Man is only but one manifestation of the God; others include the Horned God Herne, the Sky God (equivalent to the Earth Mother), Jack of the Green, Silvanus (the God of the Forest) and even, the myth of Robin Hood. The Green Man is often represented in the pagan calendar as an expression of the cycle of life/death/rebirth. As such, the representation of the God is often more earthy in quality than the ethereal qualities often ascribed to the Goddess. He is the primal force at work in nature, and is often portrayed as having horns to denote his status as a forest-dwelling God.

Some commentators speculate that the appearance of the Green Man in medieval churches actually represents the 'fallenness' of man (i.e. their innate nature). That the pagan path leads to sin and suffering: the autumnal leaves, not vernal ones, of the Green Man represents his nearness to death, not life. This type of reevaluation of pagan myths was a major theological pastime of both monks and scholars in the middle-ages.

THE PAGAN CALENDAR

An extract from the website <http://www.wicca-wares-to-go.com> by Cecily Moon

There are many different variations in the way pagans celebrate their various Sabbats (symbolic dates) in the lunar year. However, the story remains essentially the same in meaning throughout these variants. The following representation is drawn from the English rural farming calendar.

Winter Solstice (Yule): The shortest day of the year (21st December) is the date at which the God (Oak King, Green Man) is born to the Mother aspect of the Goddess. The Mabon, as the young God is known, grows one year for every day that passes over the festive period. He becomes the Sun King on the Twelfth Night (i.e. 12 years old) and earns his magical instrument that he uses to command the skies. In his ascendancy he brings vital warmth and light to Mother Earth.

Spring Imbolc: (pronounced "IM-bulk" or "EM-bowlk"), **Candlemas or Feast of St. Brigit:** At the first sight of emerging spring flowers, usually white snow drops, the May Queen returns to usher in Spring. The Sun King once again becomes the Green Man. This marks the central point of the dark half of the year. It is a time when traditional farmers start to till the earth in preparation for a new harvest. The festival of the maiden (Feast of Saint Brigit) honors the maiden aspect of the Goddess – the promise of a bountiful harvest.

Summer Beltane (May Day): The sun is usually starting to arch ever higher in the sky by May Day (30th April), hawthorn bushes are usually foaming all around the British Isles with white sweet scented flowers to welcome the May Queen. She seeks out the Green Man, who courts her and she symbolically turns into a hind (deer): the God aspect is often represented as a stag. They then make love under a hawthorn bower. This act continues the cycle of birth and rebirth of the God of Yuletide (Oak King).

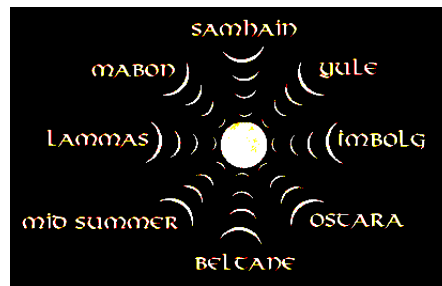
Autumn Lammas: The first grains of the harvest are baked into bread for ceremonial purposes (1st August), this symbolizes that the God (the Green Man et al) is dying (the spirit of the corn). The last sheaf harvested is usually saved as ‘the living spirit of fertility’. It is usually used to sow crops for the next year: this symbolizes that the God must die in order for the life cycle to be preserved and continue.

Winter Samhain (Hallwe’en): The Green Man at this time departs to the Otherworld (31st October) – he becomes the King of the Otherworld. The Goddess moves into her Matriarch/Crone aspect that represents wisdom, farseeing and magic. The doors between this world and the Otherworld are opened. At this time contact with dead relatives, and even future ones (sons and daughters) is possible.

At this time excess cattle are usually slaughtered and salted or smoked. All perishable fruit is quickly eaten.

DATES OF THE PAGAN YEAR

Samhain	31 st October
Yule/Winter Solstice	21 st December
Imbolc/Imbolg	2 nd February
Ostara Spring Equinox	21 st March
Beltane	30 th April
Litha/Summer Solstice	21 st June
Lughnasadh/Lammas	31 st July
Mabon Autumn Equinox	21 st September



THE OAK KING & THE HOLLY KING

An extract from the website <http://www.wicca-wares-to-go.com> by Cecily Moon

Some wicca traditions, like *Alexandrian Wicca*, split the godhead into the Holly King and the Oak King, the pair engage in several ritual dramas over the year to amplify themes of dying and resurrection.

The Oak King is born at Yule; he grows in his power (waxing – like the phases of the moon) until Beltane and then his power gradually diminishes (waning) until his death at Samhain. The Holly King is born at Litha (Spring Equinox); he grows in power until its peak at Samhain and it gradually diminishes until his death at Beltane. They both are reborn each year, in some traditions, the Oak King returns as the Holly King - amplifying the notions of the life, death and the resurrection cycle. These two aspects of the God fight each other twice a year: once at Yule where the Oak King is triumphant, and once at Midsummer (Summer Solstice) where the Holly King is victorious.

The Oak King symbolizes healing, the gaining of power, and joy of life. This aspect is especially associated with nature: the King rules over Spring and Summer. The Oak King is also said to represent the conscious mind. The magical tool of the Oak King is an oak spear.

The Holly King symbolizes the mysteries of death and rebirth, and lessons that need to be learnt, even if sometimes they are hard to accept. The Holly King is associated with the Underworld (Otherworld or Summerland) and other elemental worlds. The Holly King could be said to also represent the unconscious mind. The associations to the Underworld and the unconscious mind reflect the time of year the Holly King rules: Winter and Autumn that are seen as times of quiet contemplation, and even magic. The magical tool of the Holly King is usually a chalice that represents the primal cauldron. The primal cauldron is a representation of the womb of the Mother (the Goddess a.k.a. the Great Mother), this is said to remind us that everything eventually returns to the Mother. The combination of the spear of his oak brother and the chalice of the Holly King symbolize the mystery of life and death in the ecstasy of sexual union.



THE MYSTERY OF THE MABON

An extract from the Celtic Ruins website <http://www.celticruins.com/mabon> by Mab the Magnificent

The Mabon is many things, a child of promise, a legendary leader and God. The origins of the Mabon are deeply tied to Celtic mythology. He is a child of the Otherworld (Underworld), but he is also the prodigy of Earthly parents. His cult was widely spread across the north-west of Britain during pre-Roman times. He shares a number of similarities with the Greek god Apollo; he is both a hunter and a harper. His name Mabon simply means 'son', he is also a God of Youth similar to that of Angus.

In the Welsh tradition, his mother's name is Modron. She is often linked to the widespread cult of the Mothers: these are representative aspects of the Goddess. Modron is therefore, often linked to stories about Rhiannon, Macha and Dementer (other popular representations of the Goddess). Modron's cult is closely tied to that of her lost son, the Mabon. In a late sixteenth-century folk story, Modron is linked to the mythic lineage of Morrighan. Therefore, the Mabon is thought to be of noble blood.

The cult of the Mabon that was found in the north-west of Britain, is thought to be representative of a far older mythology, the mythology inscribed within the pagan calendar. In the pastoral version of the pagan calendar, the Mabon is the young Sun King (Oak King). Yule is thought to be the symbolic day when the God is born. He is the star child, or otherwise known as the Mabon. He is the sacred son, the child of promise. For everyday that passes leading up to the 12th Night of Mabon, the Mabon symbolically ages one year. At the age of twelve, the star-child finally earns his magical instrument and becomes the young Sun King. At this time of year, many communities hold initiation ceremonies to acknowledge a child's coming of age – often two youngsters are chosen as representatives of the 'living spirit of the God and Goddess'.

Many scholars suggest a linkage between the legends of Sleeping Lords and the Mabon. These legendary heroes are said to sleep under significant hills and barrows in the British Isles. From King Cronos, King Arthur, through to Bran the Blessed, the myth endures. These traditions suggest that in a time of national torment, an undying champion will awake to make the ultimate sacrifice for his country, and voluntarily agree to become their tribal representative in the Otherworld. In doing so, the hero would join the ranks of the Gods, who also dwell there.

THE FATE OF FAIRIES

An extract from the Celtic Ruins website <http://www.celticruins.com/fairies> by Mab the Magnificent



The image of fairies as being diminutive fey folk whom inhabit the flora of the British Isles is a little misleading. The word fairy derives from ‘fays’ meaning the *Fatae* or Fates. They are the British version of the Irish *Sidhe* dwellers; they bestow gifts of prophecy and music. There is also evidence to suggest a relationship between them and the Great Oracle at Delphi i.e. the Fates. In the oral tradition, they are said to be angels from the *Fall* (the Fall of Heaven), or they are the children of Adam and Lilith. These prodigy being the elder brethren of humanity, neither divine nor human, but none the less immortal.

The Irish tradition gives us the *Aes Sidhe*, who inhabit the *Sidhe*. The *Sidhe* are the Hollow Hills, places below ground that lead to the Otherworld (or Summerland), like natural land features or ancient burial mounds. The *Sidhe* hollows are inhabited by both the *Aes Sidhe* and the *Daoine Sidhe*.

The *Aes Sidhe* are the Hosts of the *Sidhe*; they are the fairy inhabitants of the Otherworld. They are said to ride out on the eves of the four great fire festivals, and commune with Earthly folk. The *Daoine Sidhe* are humans who inhabit the Hollow Hills (*Sidhe*). These mortal people have been honored by fairy folk to live amongst them, and they now reside in the inner-world with their Hosts. As such, they are afforded the same prestigious title as ‘the Good People’ or ‘the Gentry’. There is also an ancient tradition that gods and heroes often enter the *Sidhe* and dwell there.

Another Irish tradition related to the *Sidhe* is that of the *Banshee/Bean Sidhe*. A *Bean Sidhe* is a dead woman of the *Sidhe* who returns from the Otherworld, to warn of the impending death of a member of her family.

The Scottish variant of the *Sidhe* is the *Seelie Court*. This Blessed Court also exists in the Otherworld. The Scottish fairies also commune with Earthly folk during the great fire festivals. They are known to be fair in their dealings with fair-minded people, but are quick to gain revenge against those who have offended them. In all the British traditions, fairies have a sense of morality that often seems both harsh and strange.

One story in particular demonstrates the bewildering logic of the fey, the legend of Wild Edric. Wild Edric lived in Shropshire, and snatched an Elf-maiden from a fairy dance held in the local woods, and subsequently married her. He was allowed to do so under the strict proviso that he never sought to reproach her anything of her deeds (for her fairy sisters’ sakes), and never return to the scene of her abduction (courting). Many years later, he inadvertently broke his vow not to reproach her, and she vanished – leaving the woodsmen brokenhearted and bereft.

MYSTERY NOTE

The mysterious yellowing envelope reveals a small jasmine scented purple note. It is address to 'Laura'.

Dear Laura,

So much has happened, and some of it quite pleasant, but I think on measure, I'd forfeit it all to experience your advantages.

Please see the inserted picture.

<There is a faded black and white photograph inserted that shows a primly dressed twenty-something women holding up an infant trying to walk. The fashions look like the photograph was taken sometime in the 1950s. The woman looks an awful lot like Adrienne>

I suppose I should at least tell you a little something about my self and my life, considering I know all about yours.

I did quite well academically and finished school in 1948. I worked in the emerging electronics field, mainly dealing with televisions. My *natural* abilities soon garnered me praise and promotions, I almost felt like I was cheating myself! Soon, I was chief engineer at the *British Broadcasting Corporation* – a woman in charge in the 1950s! Unfortunately, I met a gentleman called Roger. He was no gentleman, and I soon found myself pregnant. My son, Ryan was born in 1954, followed by my daughter Imogen in 1957.

Our little family moved back to Roger's hometown of Liverpool in the early 1960s. I desperately tried to convince my husband to get into band management and sign up a group called *the Quarrymen* at a local fete. He said I was daft and should stick to making cakes. A few years later, the band broke big, now called *the Beatles*. Oh how I cried, but at least I managed to be one of Paul's first groupies, and my third son, Paul was promptly born on Xmas Day of 1962. I later divorced Roger, quite an act of defiance in 1964. He had taken to drinking after his near miss with fame, and I knew the swinging sixties were just about to happen!

At the age of 35, I moved to London. I moved into Carnaby Street with three young children in tow. I quickly got into fashion design and made the rest of the sixties swing, baby! Despite my age, I did manage to become quite the *Mrs. Robinson* if you know what I mean, and I'm sure you do. I might have even managed to marry old pal Paul, if Linda hadn't got there first! However, at the end of the sixties, something struck me.

I've spent many years as the doyen of the London fashion establishment, and I have enjoyed myself immensely, but to be honest, I'd rather be where you are right now. To see the future! Space travel! And to see what the quest for the stars holds. Seeing grainy images of Neil Armstrong bouncing up and down on the Moon is no substitute.

Anyway, those are my thoughts on the matter. Perhaps I might have thought differently at your age.

I am you Laura, quite a deal older, but probably none the wiser. There was nobody as wise as me back then! (Or more accurately, forward). You soon go back in time and perform great deeds. But you stay there; you become me. However, if I write you this note and give it to my children (or I deliver it in person), you will get it in time to change your future. To have a future, or to have a past? That old Shakespearean line.

When you discover the plot at the Manor House, you must make sure to get the vials and *the Book of Shadows* before they are arrested, it is the only way to get back to the future. It's not often you get 30 years thinking time to decide upon instant decisions.

Love Laura. There's nothing like self-esteem.

WICCA RITUAL

Pagans, Wiccans and the Magical Sceptred Isle Osborne Holdings 1932, author Emma Ferris

The following example of the summoning ritual comes to us from the *Qabalistic* tradition. As such, it represents a respectful approach (white magic approach) to communing with the Goddess.

1. Turn Clockwise (sunwise) three times – these three circles represent time and space (ring of the cosmos, chaos, and pass-not).
2. Say aloud the purpose of the ritual
3. Call upon the 4 Elements
Fire: Candles, Flame etc
Air: Incense, Feathers etc
Water: Wine, Ice etc
Earth: Stone, pestle etc
4. Communion with the Goddess (drinking and blessing wine etc)
5. Closing Meditation (taking a pause to reflect on the activity undertaken)
6. Releasing the Elements (requires thanking the all four elements in reverse order and dispersing)
7. Turn Anti-Clockwise (widdershins) three times to close the out the ritual.

THE HERBAL CODE

Many old magickal recipes and spells required seemingly strange ingredients like ‘the navel of a male crocodile’. They cannot always be taken at face value; the previous ingredient being nothing more than pond weeds. It has often been the case in history that magic has been frowned upon as an unnatural act. Most practitioners have resorted to encoding their ingredients, and even encoding their spell books. The code name of the ingredient usually bears some actual relation to the items origin, usage, taste, smell or look i.e. Crocodile Dung = Black Earth.

Here is a list of common ingredients:

Adder's tongue: Plantain
Bat's Wing: Holly Leaf
Bat's wool: Moss
Blood: Elder sap
Bloody fingers: Foxglove
Bodily Fluids: Houseleek
Brains: Congealed gum from a cherry tree
Bull's blood: Horehound
Corpse candles: Mullein
Crocodile dung: Black earth
Dead Man: Ash or Mandrake root carved in a crude human shape or poppet
Dragon's scales: Bistort Leaves
Ear of an ass: Comfrey
Ear of a goat: St. John's Wort
Eyes: Eyebright
Fingers: Cinquefoil
Hair: Maidenhair fern
Hand: The expanded frond from a male fern used to make the true hand of glory, which is nothing more than a candle made of wax mixed with fern
Heart: Walnut
Lion's tooth: Dandelion
Skin of a man: Fern
Skull: Skullcap
Snake: Bistort
Snake's blood: Hematite stone
Tongue of dog: Hound's tongue
Tooth or Teeth: Pinecones
Unicorn horn: True unicorn root
Worms: Gnarled, thin roots of a local tree

BARROWMERE COVEN: BOOK OF SHADOWS

The actual text of this *book of shadows* is heavily encoded with various symbols that only occasionally make sense (like some Greek mathematical symbols). However, an unnamed author has handily inserted a number of loose leafs of yellowing foolscap paper showing English translations for *some* of the spells.

The following three spells are translated:

Spell One: Chromatic Transference

Note: The phases of the moon represent the level of transference achieved by this ritual; it is unknown just how far the individual/s will be propelled in time, as it still remains untested. The original Greek text was incomplete and unfortunately stained in blood. It is indicated that the fresher the blood present, the greater the chance of success of the incantation working. Virginal blood is an essential part of the sacrifice needed, as any impurities will spoil the ingredients entirely.

List of Ingredients:

Blood of Innocence (varied amounts)
Blossoms of Jasmine (six blooms)
Bat's wool (2 handfuls cut with a silver blade)
Bodily Fluids (2 hands full, cut with a silver blade at midnight)
Brains (a pureed pestle full)
Bull's Blood (ground in a pestle with water)
Corpse Candles (one handful gathered at dusk)

THE RITUAL

A standard summoning ritual is engaged until communion takes place, then a small sip of the concoction is drunk by all. The lead summoner should then demand to see the future (or the past) by the Goddess, under the threat that more innocent blood will be shed in her name. She should comply if all has worked successfully. Finally, the caster should demand a gateway be opened to the new location, or he (she) will dare to speak the 'eternal name' of the Goddess, as commanded and known by the ancient Greek magician Hippocrates. This bluff (he never revealed her true name in his writings) only works because these ingredients are representative of the great magician's own spell. Blood should then be scattered around the circle. A gateway should appear; it needs to be entered with relative haste.

The amount of sacrificial blood needed is unknown, but Hippocrates tells us that the souls of ten of his servants was enough to displace him 100 hundred years.

Spell Two: Augury

The process of Augury is often successfully performed in meditation with the Goddess. However, such gifts aren't readily bestowed on those would regularly abuse the power of the Goddess. Hippocrates outlines a way of confusing the Goddess into telling of future events. The ritual is undertaken as normal, but once the purpose of the ritual has to be stated, certain steps are undertaken to deceive.

The Goddess is consecutively called upon by a host of different names, manifestations and forms (Diana, Earth Mother, The Crone, The Maiden, Modron et al). After about 3 minutes, another individual present should restart the list and implore each new manifestation to show the future. Once the individual has sensed a response is in the offing (whether negative or positive) they need to proclaim: "You are not the Earth Mother!" (or whatever manifestation they have sensed). After this process continues for quite some time (30 minutes or more?), the original caster should threaten to 'expose' the false deity by proclaiming her one true name – i.e. Hippocrates's bluff. The caster then should implore the 'real' deity to come forward and prove her abilities by showing him *his* future. It is vitally important to limit the scope of the inquiry (one life, or event). It is speculated that Hippocrates himself became befuddled in his old age, not from dementia, but by exploring the infinite possibilities of discovering the future.

Spell Three: Cadaver Revivification

Note: The process of reviving corpses is an ancient art that comes down to us from Egyptian clerics (embalmers). In the later reign of the invading foreign pharaohs, the priesthood sought to revive the souls of long dead, noble pharaohs. Although the gates to the Underworld had been routinely breached by deep communion with the dead, the revival of withered corpses remained a major stumbling block. That was until forms of negation developed to deny the living their life force.

The process requires careful preparation of the corpse, communion with the dead individual and the selection of a suitable sacrifice.

1. Preparation of the Corpse: The corpse should suitably be fresh and well maintained, or unspecified problems can occur. The body should ideally be separated from impurities like soil and other contaminants. Death by poisoning represented a major problem for the Egyptian clerics; the revived quickly die again if an amulet or a suitable antidote isn't quickly applied. The corpse should be shed of clothing, as it is yet another source of possible contamination.

The following ingredients are necessary for the salve that is applied thickly to the skin:

Blood of the soon to be sacrificed (some retained for ritual purposes)

Mandrake (several new shoots)

Crocodile Dung (unspecified amount)

Worms (a ground cup full)

Quart of quicksilver (only half is used in this preparation mixture)

Unicorn Horn (ground cup full)

Pure Rain Water (bucket full)

Lilies (matured on the blood and bone of the deceased)

These ingredients are mixed and applied liberally and left to dry for 10 hours.

2. Communion with the Dead: The individual should be contacted ahead of time, before the spell takes effect. Those unaware of procedure often die immediately out of pure shock (heart failure). Some others wish to stay where they are, and some refuse to go against the natural order of things.
3. Suitable Sacrifice: Many victims are unsuitable for selection because their life force is weak (old or suicidal), some are strong willed (they fight the process) and others minds have effectively gone (mental illness and dementia). It is best to choose individuals whose personalities are compatible with the deceased, or risk longer-term depression and madness occurring through unfamiliar biorhythms.

THE RITUAL

The standard summoning ritual occurs and the dead soul is called upon. Both bodies are to be present in the magic circle during the ritual. One of the caster's assistants slits the victim's throat and mixes the remaining blood with the remaining quicksilver and pours an unbroken line from the victim to the sacrifice. The summoner calls upon the Goddess to restore life to the victim for the injustice done. Once (or if) this occurs, the life force is returned to the victim, but it flows immediately through the unbroken line to the new host. The Goddess will quickly realize the trick that has been played upon her, and efforts must be hastily made to release the elements before retribution. Quicksilver is thought to mask the process because of its changing consistency and its reflective metallic nature.

HEATHER'S DIARIES

The diary is scented with jasmine, it has dried flowers for bookmarks, and the penmanship is of striking quality. The diary is an ordinary black imitation leather 18-month journal for the years of 1991/92.

28th February 1991

I'm not quite sure why I should put my thoughts to paper, but I am seemingly compelled to do so. I have not returned, and I may be banished forever. After an uneventful delivery to the woodsmen's log cabin, I stumbled into the night air only to hear the cries of wild men. The sounds of horses hooves thundered through the ground relentlessly, lights blazed through the darkened woods. Although petrified, my natural curiosity got the better of me and I sought to investigate.

Stumbling through the undergrowth, I espied the wild men and women around a campfire, dancing in their violent, savage ways. I could not see any musical instruments, but I could hear music emanating out from a large box upon one of their metal steeds. I lost my footing upon a grass embankment, as the music thundered to life again. I fell into the circle of light cast by the campfire, my ankle sorely sprained, I sensed the wrath of my captors. They laughed and handed me some berries with smiling faces upon them, and a little time later, I was compelled to dance like a demon amongst my captors.

Soon sunlight moved overhead, I found myself upon the back of one of the great metal steeds, laying beside one of the wildmen. I had no fear left inside me for men of the world. We laid their naked, unabashed and undaunted.

3rd March 1991

I fear to return to my people, I know the stories well enough to know my fate. Jack, my consort, my lover, is kind and has offered me sanctuary. He lives amongst others in the village of Barrowmere. I am fearful, but believe he will protect me. Do not judge me harshly.

4th April 1991

I am with child. Those words still do not sink in. They swirl around my mind but find little purchase. I suppose it *is* possible, but highly improbable. There is no returning now, the rules are clear.

16th July 1991

I grow tired easily these days; illness comes in the morning. Jack has grown fearful of local scandal, and has forbade me to stay in doors. It makes my morning sickness worse to be trapped inside this cramped, featureless dwelling.

20th August 1991

My belly swells much to my perturbation, my emotions ebb and flow erratically. My new husband (as of three days ago) grows irritable with my increased demands. I suspect he has started to drink hard liquor.

30th August 1991

The bruises come. The powers of insight told me so before the first blow was struck. It is funny how impending pain heightens the gift. I fear for my unborn son. For I now know it to be a son.

20th September 1991

The pain in my back does not abate. I have countenanced retaining the services of a physician, but I fear that the bruising upon my body might raise comment. Besides, I'm not sure my kind give birth in quite the same way, not being a true midwife. Tears fall like rain in the lonely hours, but they are preferable to the hours he is here.

23rd October 1991

I lost consciousness again. I am not sure if it is to do with eating wrong foodstuffs, or the blows I have sustained. I seem to loose track of time easily, and I can see past and future events connecting and reconnecting. This doesn't generally bother our kin, but the uncertainly silences the gentle footfalls of my future unborn son.

16 November 1991

My slight frame can no longer bear my child across the room. I rely upon the good grace of my husband for food and personal hygiene. There is little to spare. I cry myself to sleep at night knowing the fate of my son.

1st December 1991

Here I sit clutching my newborn son, covered in blood and writhing in pain. My husband is in the bed of another. My son's emerald green eyes are the most precious jewels I have ever seen. I know now, I must at least try to change the future, whatever consequence may come.

Lodged this particular page is a folded piece of paper that has blood splatters upon it, making it slightly problematic to open. Its contents are hard to decipher, but it appears to be a list of dates:

The Events Leading t..... stopped.

1st May 2004

Early Afternoon: The death of the local midwife/doctor by a speeding car outside the general store

Late Afternoon: The disillusionment of the local priest

2nd May 2004

Early Morning: The murder of the local veterinarian by thieves

Late Night: Hay bails set alight by teenagers at an all night party

Midnight: The birth of a two-headed lamb at the same farm

3rd May 2004

The cry of the Golden Cockerel, Vithofnir will sound

14th December 1991

I find the woman called Helga and her boyfriend called Henrik. I implore them to leave for their own safety. I even name the man called Roach who will strike. The more I tried to persuade them of the truth of my claims; the more they considered me with lurking suspicion. I think I have made a serious error of judgment.

18th December 1991

I made an early morning journey up to the village green; the body was sprawled out there, as I knew it would be. Only now do I realize that I may have left my footprints in the early morning snow.

19th December 1991

A policeman has been around to question me. Henrik has suggested that I was a part of the conspiracy to murder. Sadly, I can see merit in his claim. It appears there is no escaping my fate, someone is laughing at my expense. My son sleeps soundly in his cot, if only I was allowed to call him a name befitting his beauty, rather than doltish Thomas. I must prepare for the future.

20th December 1991

This will be my last entry. Thomas Roach has been told about my allegations. A man who is willing to slaughter and defile an innocent traveler like that, is likely to do far worse to those who have exposed their indiscretions. If I stay, I put my child's life in jeopardy; if I leave, he will still suffer indignities, but will live. I cannot take him back to my people; I myself will be lucky to be accepted back amongst the fold.

I have made plans to fake my death by the riverside. There must be no doubt that I have gone, in case Roach suspects otherwise, and holds you, my son to ransom for revenge. I must go before first light.

I will always love my dear, and one day I shall wipe away your tears.

RAGNAROK: THE END OF THE WORLD

An extract from the Norse Myths forums <http://www.norsemyths.com/ragnarok> by Henrik Anders

Loki Blokey: Can someone explain the link between Yggdrasil the tree and Vithofnir the cockerel, please?

Anders01: The tree you refer is indeed Norse in origin, but similar myths exist in other mythologies. It is the World Tree, otherwise known as the Tree of Life in similar traditions. In the Norse tradition, it has three main roots: one in Asgard by Urd's fountain, the second in Midgard by Mimir's Well and the third is where Gods meet daily to confer and pass judgement on mortals. At the very top of the tree sits Vithofnir, the golden cockerel, who it is said will crow at the dawning of the day of Ragnarok i.e. the end of the world.

Other birds and animals live within the other branches and roots of the great tree, including an eagle, a falcon, a goat, a squirrel and four stags (Dain, Dvalen, Duneyr and Durathor). A serpent named Nidhoggi constantly gnaws away at the roots. The great tree will fall in the final battle of Ragnarok.

Loki Blokey: So what happens after Ragnarok, then?

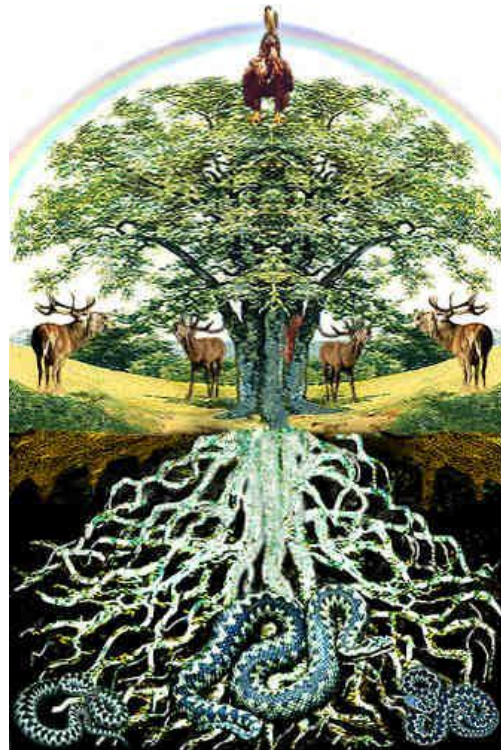
Anders01: Some speculate that another tree grows up in its place, replicating the cycle of birth and rebirth found in many other ancient forms of religion. Some think that maybe a great hero survives – Loki perhaps? ☺ - and disappears into the Underworld to retrieve a new sapling.

Loki Blokey: Cheers Anders. I'll make sure to kill any cockerel that comes in front of my path with a golden sheen! ☺

Modron: It must be done.

Anders01: LOL! Loki ☺ What must be done Modron? ☺

Anders01: Here is a picture Loki ☺



WICCAN, WITCHCRAFT & PAGAN DEFINITIONS

Taken from *Pagans, Wiccans and the Magical Sceptred Isle* Osborne Holdings 1932 Emma Ferris

Please Note: The following handout is provided purely to legitimize any player knowledge of the occult or pagan practice.

Aboriginal: Pagan tradition of the native Australian people.

Adept: An individual who through serious study and accomplishments is considered highly proficient in a particular magickal system.

Akasha Spirit: The fifth element, the omnipresent spiritual power that permeates the universe.

Alchemy: A branch of High Magick developed in the Middle Ages which sought to magickally and/or chemically turn base metals into gold.

Altar: A special, flat surface set aside exclusively for magickal workings or religious acknowledgment.

Amulet: A magically charged object which deflects specific, usually negative energies. A protective object.

Ankh: An Egyptian hieroglyphic widely used as a symbol of life, love, and reincarnation. It is a cross with a looped top.

Arcana: The two halves of a tarot deck. The Major Arcana consists of 22 trumps, the Minor Arcana consists of 56 suit cards (sometimes called the lesser or lower Arcana).

Aspect: The particular principle or part of the Creative Life Force being worked with or acknowledged at any one time.

Asperger: A bundle of fresh herbs or a perforated object used to sprinkle water during or preceding ritual, for purification purposes.

Astral Plane: A place which is generally conceptualized as an invisible parallel world which remains unseen from our own solid world of form.

Astral Travel/Projection: The process of separating your astral body from your physical one to accomplish travel in the astral plane or dream time.

Astrology: The study of and belief in the effects the movements and placements of planets and other heavenly bodies have on the lives and behavior of human beings.

Athame: A cleansed and consecrated ritual blade. Usually double edged, and black handled. It is never used to cut anything on the physical plane. Pronounced several ways: Ah-THAM-ee ATH-ah-may ah-THAW-may.

Aura: The life-energy field which surrounds all living things.

Automatic Writing: Form of divination where the channeler uses a pen, paper and an altered state of consciousness to receive messages.

Balefire: A fire lit for magickal purposes, usually outdoors. They are traditional on Yule, Beltane, and Midsummer.

Bane: That which destroys life, which is poisonous, destructive, dangerous.

Banish: To magickally end something or exorcise unwanted entities. To rid the presence of.

B.C.E.: Before Common Era. Synonymous with B.C. without religious bias.

Bells: Often used as ritual tools. They can be used to invoke directional energies, to ring in the sunrise on a Sabbat, or to frighten away faeries and baneful spirits.

Besom: A witch's broom.

Bi-Location: A type of astral projection during which you maintain awareness of your present surroundings.

Bind: To magickally restrain something or someone.

Blood of the Moon: A woman's menstrual cycle. Should this cycle occur over a Full Moon or New Moon, she is far more powerful than during any other time of the month, as long as she acknowledges this strength within herself.

Book of Shadows: A witch's book of spells, rituals, magickal lore. Much akin to a magickal cookbook. Also known as a BOS.

Boline: A white-handled knife, used in magick and ritual for purposes such as cutting herbs or piercing a pomegranate.

Burning Times: Reference to a historical time from around 1000 C.E. through the 17th century when it is said that up to nine million people were tortured and burned by church and public officials on the assumption that they were the Christian version of Witches. This turned into an extremely profitable venture, as all land and property was seized from the accused individual and portions given to the accuser (in reward fashion) and the remainder seized by the church officials. Historians indicate that the majority of people tortured and murdered were woman and children.

Call: Invoking Divine forces.

Cauldron: Linked to witchcraft in the popular mind, this symbolizes the Goddess, the waters of rebirth.

C.E.: Common Era. Synonymous with A.D. but without religious bias.

Censer: A heat-proof container in which incense is burned. It is associated with the element air.

Ceremonial Magick: A highly codified magickal tradition based upon Kabbala, the Jewish-Gnostic mystical teachings.

Chakras: Seven major energy vortexes found in the human body. Each is usually associated with a color. They are: crown - white; third-eye - purple; throat - blue; chest - pink or green; navel - yellow; abdomen - orange; groin - red. Smaller vortexes are located in the hands and feet as well.

Chalice: A ritual tool. It represents the female principals of creation.

Channeling: A New Age practice wherein you allow a discarnate entity to "borrow" your body to speak to others either through automatic writing or verbally.

Chaplet: A crown for the head usually made of flowers and worn at Beltane.

Charge: The Originally written in modern form by Doreen Valiente, it is a story of the message from Goddess to Her children.

Charging: To infuse an object with personal power.

Charms: Either an amulet or talisman that has been charmed by saying an incantation over it and instilling it with energy for a specific task.

Circle: Sacred space wherein all magick is to be worked and all ritual contained. It both holds ritual energy until the witch is ready to release it, and provides protection for the witch.

Cleansing: Removing negative energies from an object or space.

Collective Unconsciousness: Term used to describe the sentient connection of all living things, past and present. See also Akashic Records.

Coming of Age Ritual: At age 13 for boys, and at the time of a girl's first menses, Pagan children are seen as spiritual adults. The ritual celebrates their new maturity. Generally this is the age when they are permitted membership in covens.

Cone of Power: Psychic energy raised and focused by either an individual or group mind (coven) to achieve a definite purpose.

Conscious Mind: The analytical, materially-based, rational half of our consciousness. The part of our mind that is at work while we balance our checkbooks, theorize, communicate, and perform other acts related to the physical world.

Consecration: The act of blessing an object or place by instilling it with positive energy.

Coven: A group of thirteen or fewer witches that work together in an organized fashion for positive magickal endeavors or to perform religious ceremonies.

Covenstead: The meeting place of witches, often a fixed building or place where the witch can feel safe and at home.

Craft: Witchcraft

Crone: Aspect of the Goddess represented by the old woman. Symbolized by the waning moon, the carrion crow, the cauldron, the color black. Her Sabbats are Mabon and Samhain.

Cross-Quarter Days: Refers to Sabbats not falling on the solstices or equinoxes.

Days of Power: See Sabbat. They can also be days triggered by astrological occurrences - your birthday, a woman's menstrual cycle, your dedication/initiation anniversary.

Dedication: The process where an individual accepts the Craft as their path and vows to study and learn all that is necessary to reach adeptship. It is a conscious preparation to accept something new into your life and stick with it, regardless of the highs and lows that may follow.

Deosil: Clockwise, the direction in which the shadow on a sundial moves as the Sun "moves" across the sky. Deosil is symbolic of life, positive magick, positive energies.

Dirk: Ritual knife of the Scottish tradition.

Divination: The magickal art of using tools and symbols to gather information from the Collective Unconsciousness. This can be on people, places, things and events past, present, and future.

Divine Power: The unmanifested, pure energy that exists within the Goddess and God. The life force, the ultimate source of all things.

Dowsing: The divinatory art of using a pendulum or stick to find the actual location of a person, place, thing, or element.

Drawing Down the Moon: A ritual performed during the Full Moon by witches to empower themselves and unite their essence with a particular deity, usually the Goddess.

Drawing Down the Sun: Lesser-known and lesser-used companion ritual to Drawing Down the Moon in which the essence of the Sun God is drawn into the body of a male witch.

Duality: The opposite of polarity. When used as a religious term, it separates two opposites such as good and evil and places those characteristics into two completely separate God-forms.

Earth Magick: The energy that exists within stones, herbs, flames, wind, and other natural objects.

Earth Plane: Metaphor for your normal waking consciousness, or for the everyday, solid world we live in.

Elements: Usually: Earth, air, fire, water. The building blocks of the universe. Everything that exists contains one or more of these energies. Some include a fifth element- spirit or Akasha.

Elementals: Archetypal spirit beings associated with one of the four elements. Elementals are sometimes called Faeries.

Eleven: Secretive tradition of the craft, which works closely with elemental beings.

Enchantment: A magickal object that must be kept absolutely secret and hidden from all human eyes and affects a hidden aura. They must be charmed first. Gems and magickal writing are good items to use.

Eostre's Eggs: Colored, decorated eggs of Ostara; named for the Teutonic Goddess Eostre.

Esbat: A ritual usually occurring on the Full Moon and dedicated to the Goddess in her lunar aspect.

Evocation: To call something out from within.

Faerie: See Elemental

Faerie Burgh: Mound of earth, which covers a faerie colony's underground home.

Familiar: An animal that has a spiritual bond with a witch; many times a family witch. Familiars can also be entities that dwell on the astral plane.

Fascination: A mental effort to control another animal or person's mind. Also known as "mind-bending". Often considered unethical.

Folklore: Traditional sayings, cures, faerie tales, and folk wisdom of a particular locale which is separate from their mythology.

Folk Magick: The Practice of projecting personal power, as well as the energies within natural objects such as herbs, and crystals, to bring about needed changes.

Gaea/Gaia: Mother Earth.

God: Masculine aspect of deity.

Goddess: Feminine aspect of deity.

Grain Dolly: Figure usually woven at Imbolc from dried sheaves of grain collected at the previous harvest. The dolly is traditionally burned at Yule and a new one made the following Imbolc.

Great Rite: Symbolic sexual union (also sacred marriage) of the Goddess and God that is enacted at Beltane in many traditions, and other Sabbats in other traditions. It symbolizes the primal act of creation from which all life comes.

Green Man: Another name for the God

Grimorie: A magickal workbook containing ritual information, formulae, magickal properties of natural objects and preparation of ritual equipment. Often used interchangeably with Book of Shadows.

Grounding: To disperse excess energy generated during magickal work by sending it into the earth. It also means the process of centering one's self in the physical world both before and after any ritual or astral experience.

Grove: Synonymous with coven.

Guardians: Ceremonial magicians use the Guardians of the Watchtowers or Four Quarters. Some witches use them, too.

Hand Fasting: A Pagan wedding.

Herbalism: Art of using herbs to facilitate human needs both magickally and medicinally.

Higher Self: That part of us which connects our corporeal minds to the Collective Unconscious and with the divine knowledge of the universe.

Hiving Off: This term is used for a small coven which splits off from a larger one. Sometimes this is done to keep the gatherings of a manageable size, other times covens split over philosophical differences.

Horned God: One of the most prevalent God-images in Paganism. NOT Satan or the Devil!!!

Initiation: A process whereby an individual is introduced or admitted into a coven. Usually a ritual occasion. Not to be confused with dedication.

Incense: Ritual burning of herbs, oils, or other aromatic items to scent the air during acts of magick and ritual, and to better help the witch attune to the goal of the working.

Invocation: To bring something in from without.

Jew-itch: Name coined by some Pagans of Jewish origin who are actively seeking out the pagan roots of their birth religion.

Karma: The belief that one's thoughts and deeds can either be counted against them or added to their spiritual path across several life times.

Kabbala: Mystical teaching from the Jewish-Gnostic tradition. Ceremonial Magick and the Alexandrian traditions are based in these teachings. Also, Qabala.

Labrys: A double-headed axe, which symbolizes the Goddess in Her Lunar aspect. Has roots in ancient Crete.

Left-Hand Path: Refers to the practice of using magick to control others, to change the will of others, for personal gain. Generally frowned upon by true Wiccans and Witch's. Dark Magick.

Libation: Ritually given portion of food or drink to a deity, nature spirit, or ghost.

Macrocosm: The world around us.

Magick: The projection of natural energies (such as personal power) to being about needed change. Energy exists in all things: us, plants, stones, colors, sounds, movements, words. Magick is the process of raising this energy, giving it purpose, and releasing it. Magick is a natural, not supernatural, practice, but is little understood. Magick is neither black nor white. It simply is. What the magician decides to do with the magick is another matter...

Magick Circle: A sphere constructed of personal power in which rituals are usually performed. Within it the witch is protected from outside forces. The sphere extends both above and below the surface of the ground.

Magickal System: The basic set of guidelines relating to the worship of specific Gods and Goddesses or cultural traditions.

Male Mysteries: Pagan study which attempts to reclaim the power and mystery of the old Gods for today's Pagan males.

Matrifocal: Term used to denote pre-patriarchal life when family clans centered around and lived near or on clan matriarch.

May Pole: Sexual symbol of Beltane representing the phallus.

Meditation: Reflection, contemplation- turning inward toward the self, or outward toward Deity or nature. A quiet time in which the practitioner may either dwell upon particular thoughts or symbols, or allow them to come unbidden.

Megalith: A huge stone monument or structure. Stonehenge is the best-known example of a megalith.

Menhir: A huge stone probably erected by early peoples for religious, spiritual, or magickal reasons.

Microcosm: The world within us.

Monotheism: Belief in one supreme deity who has no other forms and/of displays no other aspects.

Mother: The aspect of the Goddess representing motherhood, mid-life, and fertility. She is represented by the full moon, the egg, the colors red and green. Her Sabbats are Midsummer and Lughnasadh.

Myth: Cycles Body of lore about any land or people that makes up their mythology.

New Age: The mixing of metaphysical practices with a structured religion.

New Religion: Pagan term used in reference to Christianity.

Nursery Rhyme: Cute doggerel or poems supposedly written for the amusement of children. Much Pagan lore was hidden in these ditties during the years of witch persecutions.

Occult: Literal meaning is "hidden" and is broadly applied to a wide range of metaphysical topics which lie outside the accepted realm of mainstream theologies.

Occultist: One who practices and or studies a variety of occult subjects.

Ogham: Celtic equivalent of the Teutonic runes. The ancient alphabet of the Celtic people.

Old Ones: The A term which refers to all aspects of the Goddess and God.

Old Religion: A name for Paganism as it pre-dates Christianity by at least 20,000 years.

Pagan/Neo-Pagan: General term for followers of Wicca and other magickal, shamanistic, and polytheistic Earth-based religions. Also used to refer to pre-Christian religious and magickal systems.

Paganing: When a baby is presented in circle to the Goddess and God, and given a craft name which s/he will keep until about 13 and can choose their own at their Coming of Age celebration.

Pantheon: A collection or group of Gods and Goddesses in a particular religious or mythical structure.

Pantheism: Belief in many deities who are really one because they are all merely aspects of the single creative life source. Paganism is pantheistic.

Passion Over Ritual: Ritual observed when a loved one has dies.

Past-Life Regression: Act of using meditation or guided meditation to pass through the veil of linear time and perceive experiences encountered in a previous existence.

Path Working: Using astral projection, bi-location, or dream time to accomplish a specific goal. Also called vision questing.

Patriarchal: Term used to apply to the world since the matrifocal clans that worshipped Goddesses were supplanted by codified religions that honor all-male deity(s).

Pendulum: A divinatory device consisting of a string attached to a heavy object, such as a quartz crystal, root, or ring. The free end of the string is held in the hand, the elbows steadied against a flat surface, and a question is asked. The movement of the heavy object's swings determines the answer. It is a tool which contacts the psychic mind.

Pentacle: A circle surrounding a five-pointed, upright star (pentagram). Worn as a symbol of a witch's beliefs. Many witches consider wearing it inverted to be blasphemy of their faith and is commonly associated with Satanism.

Pentagram: The basic interlaces five-pointed star, visualized with one point up. It represents the five elements: Earth, Air, Fire, Water, and Spirit. It is a symbol of power and protection.

Personal Power: The energy which sustains our bodies. It originates within the Goddess and God. We first absorb it from our biological mother within the womb, and later from food, water, the Moon and Sun, and other natural objects.

Polarity: The concept of equal, opposite energies. The Eastern Yin Yang is a perfect example. Yin is cold; yang is hot. Other examples: Goddess/God, night/day, Moon/Sun, birth/death, dark/light, psychic mind/unconscious mind. Universal balance.

Polytheism: Belief in the existence of many unrelated deities each with their own dominion and interests who have no spiritual or familial relationships to one another.

Poppets: Anthropomorphic dolls used to represent certain human beings in magick spells.

Projective Hand: The hand thought to be the point through which personal power is sent from the body. Normally the hand used for manual activities such as writing, dialing the phone, etc. It is also the hand in which tools such as the athame and wand are held.

Psychic Mind: The subconscious, or unconscious mind, in which we receive psychic impressions. It is at work when we sleep, dream, and meditate. It is our direct link with the Divine, and with the larger, nonphysical world around us.

Psychism: The act of being consciously psychic, in which the psychic mind and conscious mind are linked and working in harmony. Also known as psychic awareness.

Quabala: See Kabbala

Receptive Hand: The hand through which energy is received into the body. The left hand in right-handed persons, the reverse for left-handed persons.

Rede: The Basic tenet of witchcraft. "An it harm none, do what thou will.

Reincarnation: The process of repeated incarnations in human form to allow evolution of the sexless, ageless soul.

Ritual Ceremony: A specific form of movement, a manipulation of objects or inner processes designed to produce desired effects. In religion ritual is geared toward union with the Divine. In magickal works it produces a specific state of consciousness that allows the magician to move energy toward needed goals.

Ritual Consciousness: A specific, alternate state of awareness necessary to the successful practice of magick. This state is achieved through the use of visualization and ritual. The conscious mind becomes attuned with the psychic mind, a state in which the magician senses energies, gives them purpose, and releases them toward a specific goal. It is a heightening of senses, an expanded awareness of the nonphysical world, a linking with nature and with Deity.

Ritual Tools: General name for magickal tools used by a witch or magician. They vary by tradition and usually represent one of the elements.

Runes: A set of symbols used both in divination and magickal work. There are several types with different origins- Scandinavian, Norse, Germanic.

Sabbat: A witch's festival.

Scourge: Small device made from leather or hemp which resembles a whip and is used in flagellation rites within some traditions.

Srying: A method of divination. To gaze at or into an object (a quartz crystal sphere, a pool of water, reflections, a candle flame) to still the conscious mind in order to contact the psychic mind. Srying allows the sryer to become aware of events prior to their actual occurrence, as well as to perceive past or present events through other than the five senses.

Shaman: A man or woman who has obtained knowledge of the subtler dimensions of the Earth, usually through periods of alternate states of consciousness. Various types of ritual allow the shaman to pierce the veil of the physical world and to experience the realm of energies. This knowledge lends the shaman the power to change his or her world through magick.

Shamanism: The practice of shamans, usually ritualistic or magickal in nature, sometimes religious.

Shillelagh: Magickal tool corresponding to the staff in other traditions. Usually made from blackthorn wood.

Sigil: Magically oriented seal, sign, glyph, or other device used in a magickal working. Ones you create yourself are the most effective. Sigils can be used on letters, packages, clothing, etc.

Simple Feast: A ritual meal shared with the Goddess and God.

Sky Father: Shamanistic in origin. It assigns deification to the sky as a male entity.

Skyclad: The act of celebrating or performing magickal works in the nude. Considered deeply spiritual, NOT sexual.

Solitary: Pagan who works and worships alone.

Spell: A magickal ritual, usually non-religious in nature and often accompanied by spoken words. It should be clear, concise, focused and emotional. Need must be present.

Spiral: Symbol of coming into being.

Staff: Ritual tool which corresponds to the wand or athame.

Stang: Ritual tool from Pagan Rome which resembles a two-pronged trident. Often used in place of the wand or circle.

Subconscious Mind: Part of the mind which functions below the levers we are able to access in the course of a normal working day. This area stores symbolic knowledge, dreams, the most minute details of every experience ever had by a person.

Summerland: The Pagan Land of the Dead.

Sympathetic Magick: Concept of likes attract. Most common way spells are worked.

Talisman: An object charged with personal power to attract a specific force or energy to its bearer.

Tarot Cards: Set of 78 cards which feature pictures and symbols used to connect the diviner with the collective unconscious.

Tarologist: One adept at the art and science of handling the Tarot.

Threefold Law: Karmic principle that energy that is released is returned three times over.

Tradition: Branch of paganism followed by any individual Pagan or coven.

Trilithon: A stone arch made from two upright slabs with one lying atop these. They are featured in Stonehenge.

Triple Goddess: One Goddess in all of her three aspects: Maiden, Mother, Crone.

Virgin: Youngest aspect of the Triple Goddess. Also known as the Maiden. Represented by the waxing moon, colors white and blue. Her Sabbats are Imbolc and Ostara.

Vision Quest: Using astral projection, bi-location, or dream time to accomplish a specific goal. Also called path working.

Visualization: The process of forming mental images. Magickal visualization consists of forming images of needed goals during ritual. It is also used to direct personal power and natural energies for various purposes during magick, including charging and forming of the magick circle.

Wand: Ritual tool brought to the craft from ritual magick.

Warlock: Antiquated term misused in reference to a male Witch. It means oath-breaker or Liar. Most Pagans, Witch's find the term offensive.

Web Weaving: Networking with other magickal people via conversation, writing, e-mail, to gather information which will mutually assist each party.

Wheel of the Year: One full cycle of the seasonal year.

Wicca: A modern Pagan religion with spiritual roots in the earliest expressions of reverence for nature. Some major identifying motifs are: reverence for both the Goddess and God; acceptance of reincarnation and magick; ritual observance of astronomical and agricultural phenomena; and the use of magickal circles for ritual purposes.

Wicce: Synonymous with Wicca. In some circles, Wicce is used for women and Wicca is used for men.

Widdershins: Counter-clockwise motion, usually used for negative magickal purposes, or for dispersing negative energies or conditions such as disease.

Witch: A practitioner of folk magick, particularly that kind relating to herbs, stones, colors, wells, rivers, etc. It is used by some Wiccans to describe themselves. This term has nothing to do with Satanism.

Witchcraft: The craft of the witch- magick, especially magick utilizing personal power in conjunction with the energies within stones, herbs, colors, and other natural objects. This belief system also has nothing to do with Satanism.

Yggdrasil: One of the best known Tree of Life symbols. It unites all existence from the Underworld, to the Physical world.

FUN FACTS ABOUT ELECTRICITY

An extract from the website <http://www.funfacts4kids.com> by Rupert Helms

Where would a mad scientist be without electricity? Would his hair still stand on end if he didn't mess around with static electricity? Just how many AA batteries does it take to revive Frankenstein from his eternal slumber?

Some of these questions and more will be explored today in fun facts about electricity!



“ELECTRICITY IS A FORM OF ENERGY PRODUCED BY THE MOVEMENT OF ELECTRONS”.

WARNING! Science Facts Ahead



THE ATOM: Everything is made of atoms. These are itty-bitty particles are made up of even tinier components. The central part is called the nucleus; this contains a jumble of bunched up protons and neutrons. Orbiting the neutron, like the planets in our solar system orbit the Sun, are tiny particles known as electrons. These fly around frenetically in ever changing orbits. Protons carry a 'positive' charge and electrons carry a 'negative' charge. Neutrons carry no charge. Electricity happens when an electron is temporarily taken away from its atom.

HISTORY OF ELECTRICAL ACTIVITY: Just over 300 years ago people were *very* unimpressed with the functionality of their laptops. They had no where to recharge them! In fact, they didn't even have batteries! Electricity occurs in nature (see static electricity later), it is a part of the natural order of things. However, it wasn't until Benjamin Franklin started working with electricity in the 1740s that we began to understand the process. He believed that lightening was a flow of electricity taking place in nature. He used a simple children's kite to perform a series of experiments in 1752, that proved his idea correct.

Later, Thomas Edison developed a series of 1,093 inventions that helped to utilize electricity. His most famous invention was the incandescent light bulb – a real 'light-bulb' moment! This simple invention brought cheap lighting into homes, schools and factories. Before this time, people had used either candles or whale oil in lamps for lighting. It's enough to get even the sternest of Stern Whales blubbling!

TYPES OF ELECTRICITY: There are two types of electricity: static and current electricity.

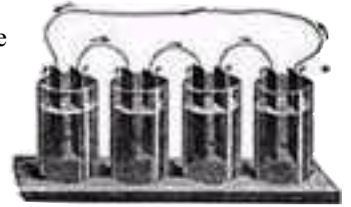
STATIC ELECTRICITY	CURRENT ELECTRICITY
This occurs where there is a build up of electrons	This occurs when there is a steady flow of electrons between objects or places
Stays in one place until it jumps to an object	This needs a conductor like wires, this substance allows electrons to move easily through it
Does not need a circuit	Needs a closed circuit to flow
Is the kind of electricity you feel after dragging your feet across a carpet and touch someone or something	The kind of electricity that powers the appliances around your home
Lightening is static electricity on a larger scale	The kind of electricity used in a battery

HOW ELECTRICITY IS MADE: The main ways in which electricity is made is through one of the following processes: coal, petroleum or natural gas burning; nuclear power; hydropower, geothermal power; solar power; wind power and bio-mass power (burning wood et al).

Generally, these processes drive the turning of a turbine generator that utilizes magnets to generate a flow of electrons. Basically, if a wire (or any other conductive material) is moved across a magnetic field, a small electrical charge is generated – the magnets rip free its electrons.

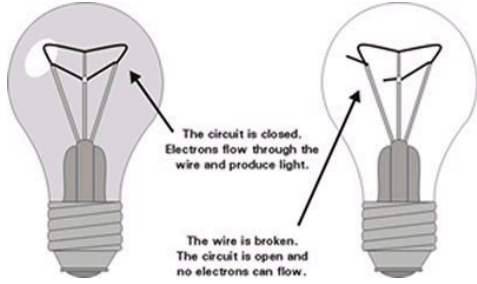
Although mad scientists *could* generate electricity from the conduction of lightening, they wouldn't know when or where it was likely to hit, and furthermore, the amount of volts sent down the wire would likely to fry any batteries present – making Frankenstein a *very* live-wire, indeed.

HOW DOES ELECTRICITY MOVE: Scientists (mad or otherwise) call the path that current electricity takes an electrical circuit. A circuit has three parts: an energy source, a connection and a load. The energy source gives the electricity its 'push' through the circuit. This push is called 'voltage' and acts like water pressure in a hose. The energy source could be a battery or a generator. The 'connection' used is usually a good 'conductor', like a copper wire, which is excellent at conducting electricity around the loop of the circuit.



The best conductors generally are metals. A substance like wood does not conduct electricity. Other substances known as semi-conductors have a weakened capacity to do so. Some substances known as superconductors (mostly specialized metals) are far better at conducting electrons at far lower temperatures. These are greatly valued by industry.

Another aspect of electrical current is the break down between voltage and amperage. The number of volts equates to how many electrons are flowing at any one time, similar to bandwidth on your computer when you download (i.e. how much can be downloaded at any one time). Amperage is a measure of the rate at which electrons are flowing, similar to the download rate of your computer (i.e. how fast you can download). It is possible that someone can be zapped by a massive voltage of electricity, but will suffer no ill effects, this is because the amperage rate of the transfer was low (and visa versa).

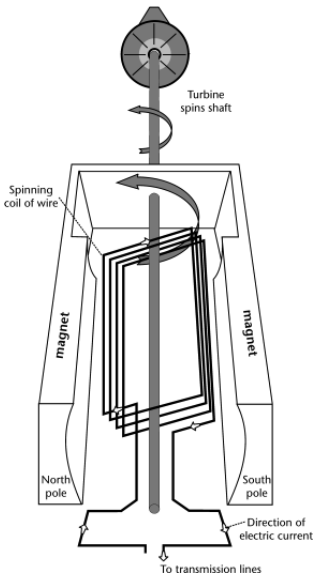


This circuit mustn't have any breaks in it for the electrons to flow continuously. A light switch is a device that opens and closes a circuit, and therefore, the flow of electrons. Inside a circuit there is a flow of electrons called a current. Currents are measured in amperes. There are two types of current: direct current and alternating (AC) current. In direct current the electrons flow only in one direction, in alternating current it flows quickly in both directions (at an extremely fast rate). Batteries have direct current. The current in your house will be alternating current.

DANGER! DANGER! HIGH VOLTAGE!

Keep safe! Never attempt to do your own experiments without an adult or teacher around to supervise. Although your brain and muscles generate small amounts of electricity to perform their everyday tasks, very large amounts won't have you running about in a blur! The average voltage of electricity flowing through a light bulb is enough to stop your heart and breathing.

TURBINE GENERATOR



MAGNETS & ELECTRICITY: Most objects in nature are balanced, force wise. Half the electrons rotate frenetically in one direction, whilst half spin the other way. And these electrons are scattered evenly throughout an object. Magnets are different in that most electrons at one end spin in one direction, and at the other end, they spin in the opposite. A magnetic field is generated that repels like-minded poles (these poles are divided into North or South). Just like protons and electrons, opposites also attract.

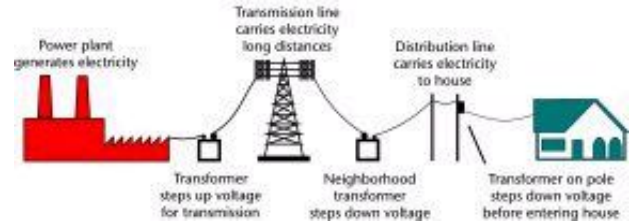
Two opposing magnets are used within a turbine generator to provide a small magnetic field; this acts upon a copper coil that is in-turn affixed to a spinning turbine shaft. A physical process like wind power or rising steam from coal burning turns the shaft; electricity is generated by the interaction of the copper coil and the magnetic fields.

BATTERIES: Use two different metals bathed in a chemical solution. The chemical reaction, between one of the metals and the solution is more vigorous, this causes more electrons to flow from this metal; causing a sustained electrical flow (through the other). If we put a light bulb between these two metals we can generate heat along the small wire filament in the bulb. The additional gases vacuum-sealed within the light-bulb help it to glow brightly.

THE TRANSFORMER: Nikola Tesla in the late 1800s pioneered the generation, transmission and use alternating current (AC) electricity. This form of electricity can be transmitted over far greater distances than direct current. This is why most households use this form of current.

Subsequently, George Westinghouse developed a device called a transformer. ~~These mechanical killing machines were sent into the future to destroy.~~ These devices aid in the transmission of electricity over vast distances – alternating current still having its limits. The transformer changes the electricity from low voltage to high voltage. Transmission lines are used to carry the electricity to substations. The substations also have a series of transformers that *reverse* the high voltage back to low voltage. The substation then transfers the electricity by distribution lines to our homes, offices and factories.

TRANSPORTING ELECTRICITY



EARTHING: The Earth is made up of materials that conduct electricity. A ‘fault current’ will flow to ‘earth’ through the live conductor, provided it is properly *earthed*. This process prevents a potentially live current from rising above the safe level. A normal power plug has three wires, two for the alternating (AC) current and one designed to ‘earth’ the appliance. In event of failure of the device (i.e. faulty current), the earth wire is designed to prevent the rogue current from potentially charging up any metallic part of the device, by redirecting its flow Earthwards.

THE GOLDEN ERA OF SPACETRAVEL (2010-2060)

An extract from the European Space Agency website <http://www.esa.org/spacecamp> by Roddy 'the Rocket' Masters

History says, it's almost 100 years since Neil Armstrong first walked upon the moon. Humanity, it is said, failed to return to the moon after the successful Apollo missions for another 50 years. Some speculated that the moon landings were faked by the Americans to win the Cold War against the Soviet Union: the lack of follow-up missions being evidence of this deception.

Of course, now we know the truth.



Wally McGhee waves once again for the folks back home after his historic stroll on the Moon N.A.S.A © 2010

2010

The first *real* moon landing by N.A.S.A takes place on April 1st 2010. An unfortunate date considering the exposure of their previous deception just days before launch. This triumph proves to be N.A.S.A swan song. Just 18 months later, the United States economy collapses under burgeoning foreign debts.

2019

The international space station, the first permanently manned orbital station of its type, is finally complete despite cost overruns of trillions. By the time of completion the Japanese, European Union and Russians are the only major partners still supporting the venture.

2036

The European Space Agency completes construction of a large base on the Moon called *Blair One*. It is a triumph of design over functionality. Problems exist in providing enough cheap transportation to deliver the necessary supplies.

2041

The Japanese Government, sensing that they are losing the space race, alter their constitution so that they are now able to militarize their space programme. The *Japanese Frontier Force*, as it is dubbed, seeks to aggressively maintain control of all of its alien territories and space-lanes.

2044

Yuri Matsumi, a Japanese government physicist, develops a working form of anti gravity on behalf of the Japanese Space Programme. This greatly assists the Japanese in launching payloads into space, and therefore, aids their efforts in overtaking the Europeans in the space race.

2049

The European Geo-Dynamics Group patents the first *Oxydizer* unit. These large industrial-grade units extract carbon from CO₂ emissions in the atmosphere. They are used to limited success on Earth in the fight to combat rampant green-house gas emissions. However, the units are primarily designed to covert the thin atmosphere of Mars (95% Carbon Dioxide) to oxygen, when the Europeans undertake a manned mission to the red planet.

2051

A Romanian aeronautics expert, Todor Prohorsky, redesigns the basic Japanese anti-gravity system. He patents it as *Prohorsky Limited Anti-Grav System*. It revolutionizes not only space travel, but also ground vehicles and sporting activities. The system allows for the development of hopper vehicle.

2054

The Japanese Frontier Force confronts a major setback when its six-man mission to Mars suffers major system crash, all the crew are lost.

2055

British inventor, Jack Riley, patents a revolutionary form of scramjet rocket, known as the Riley Scramjet Propulsion System. Shortly after, he sells the rights to the system to the floundering *Boeing Aeronautics Universal* consortium. The new standard offers immense cost savings over established rocketry forms and is quickly adopted. This invention greatly enhances the European effort into space.

2058

The European Space Agency lands a ten-man mission on Mars. Included in the large landing craft's inventory is oxydizing equipment. After their successful trial, four astronauts stay behind on the Martian surface to establish a small domed settlement. Calamity befalls the six-man crew on their return home when serious structural failures occur, the seals connecting the habitation deck modules fail, causing rapid decompression. However, disaster is averted by the quick invention of the ship's Commander Adrienne Welsh, who performs a tricky space-walk to repair the exterior of the ship, and then recovers two of the separated crew.

2059

Détente is finally achieved between the two space powers (Europe and Japan). The Europeans allow the Japanese to establish a small settlement on Mars, in an effort to aid further joint space exploration. Critics suggest that the vast sums of money used to fuel the space race have led to irreversible environmental damage back on Earth, ironically, legitimizing the quest for further space exploration.

2060

Due to the rapid advances in payload capacity achieved by the development of advanced scramjet technology and other flight developments, by the end of 2060, there are more than 1,000 inhabitants on the surface of the red planet known as Mars. As of the time of writing, it is reported that the Free People of Mars number more than 5,000 citizens.

THE SCIENCE OF SPACE TRAVEL

An extract from the European Space Agency website <http://www.esa.org/spacecamp> by Roddy 'the Rocket' Masters

There are a number of key developments in the last 50 years that have made space travel a reality. Here is an outline for students to understand their usage.

Anti-Gravity

The use of anti-gravity, or countering the effects of gravity, has been a dream of science since early in the 20th Century. For many years, it was the stuff of science fiction, not fact. The theory goes that if a *negative mass* could be created, it would repel ordinary matter. This idea derives from the Newtonian Laws of Gravity that require and 'equal and opposite force' to be applied to an object for it to move in the 'other direction', in this case, the force that is required to negate the effects of gravity acting upon a stationary object.

The term, *limited anti-gravity* that is used today denotes the use of superconductors to achieve gravity shielding. The gravity effect was first observed by Eugene Podkletnov in the 1990s, he noticed that tobacco smoke rose at a faster acceleration over spinning superconductors. It wasn't until Yuri Matsumi pioneering work in developing the 4th generation of superconductors in 2041 that Podkletnov's dream became a possibility, rather than a marginal effect. The nearly frictionless superconductor known as M23e (now known as Matkelite) made it possible for up to 30% of the weight of the object to be defrayed.

Todor Prohorsky in 2051 designed the *Prohorsky Limited Anti-Grav System*. The basic ideas of Matsumi anti-gravity system was retained, however, Proporsky had both the solenoids and superconductors manufactured in the zero gravity of space. This process aided in both refining the superconductor material, but also helped to *balance* the material at an atomic level – leading to additional gains in the gravity effect.

Modern hopper craft also utilize advances in electromagnetism to achieve flight, although this isn't strictly anti-gravity. This is why highways are still being built, these are embedded in magnetic bands under the tarmac surface to aid travel. A new hopper vehicle achieves the efficiency rating of around 70 to 80% on magnetic roads. The vehicle off-road, as it were, achieves a maximum efficiency rating of around 55% to 60%. All current hopper craft still use jet propulsion to aid in continued movement.

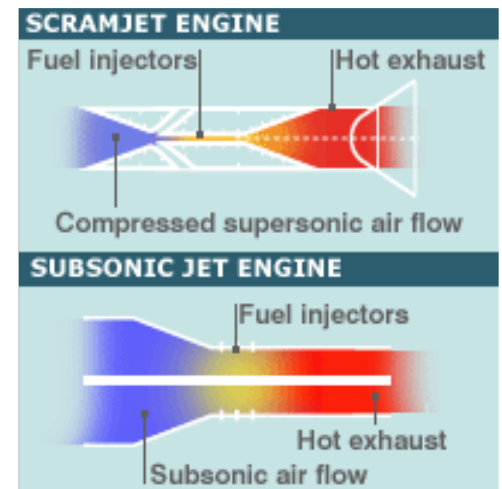
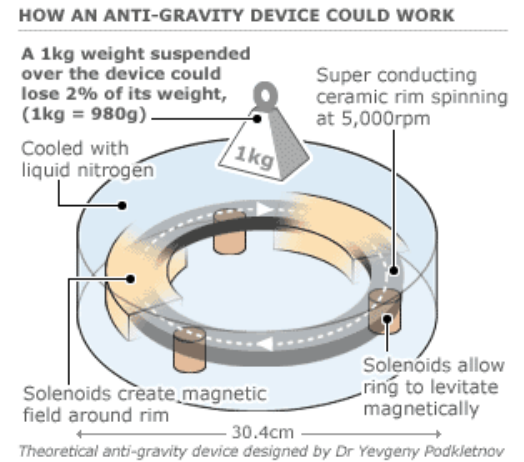
The *Styer D-10* anti-gravity docking system used on most modern spacecraft is used to aid in docking procedures, and it also helps to repel metallic forms of space junk from hitting the hold of the ship – acting somewhat like fictional energy shields found in science fiction.

Scram-Jets

The technology of scramjets was a by-product of ramjet technology. Ramjets developed during the late 20th Century, operated by subsonic combustion of fuel in a stream of air compressed by the forward speed of the aircraft. Conventional turbo-jet aircraft of the time used fan blades to compress the air. The ramjet did away with the mechanical moving parts of the aircraft (i.e. fan blades), helping to reduce aircraft weight, production costs and chances of mechanical malfunction.

The scramjet (supersonic-combustion ramjets) are ramjet engines that allow airflow throughout the whole engine whilst remaining at supersonic speeds. All jet engines gather oxygen to aid in the burning of their main fuel source, hydrogen. A true scramjet is said to be *air-breathing*, in that it gathers all its oxygen supplies from the surround environment. However, in reality a number of problems exist. Firstly, a scramjet needs to be travelling at 800,000 kilometers per an hour before they'll start. Secondly, the massive speeds achieved can cause temperatures in excess of 300° Celsius.

These problems prevented the adoption of scramjet technologies for many years, until a British inventor named Jack Riley patented the Riley Scramjet Propulsion System (R.S.P.S) in 2055. This rocketry system utilized Todor Prohorsky's purified superconductive material (first utilized in anti-gravity devices), known *Makelite Pure* – it was utilized in the construction of the nosecone (and rest of the fuselage) to reduce heat friction and drag. The other aspect of the system is that the nosecone is fitted with small *oxygen-boosters*. The detachable modular packs basically aid in funneling oxygen into the scramjet's engines, before launch and until it achieves a self sustained burn (800,000 kilometers an hour).



This process does away with the need for the rocket to carry large supplies of oxygen - a rocket usually consumes vast amounts of fuel on takeoff. The four oxygen-booster packs are automatically disconnected from their couplings at the side of the nosecone, once sufficient speeds have been achieved. These modular units incorporate glider capabilities and can be radio controlled back to the launch-pad site for refueling and redeployment. Most commercial spaceports now have installed the R.S.P.S technology. This advance means that an average scramjet rocket can now carry up to 70% more cargo than convention rockets. This has revolutionize space travel and aided in the growth of colonies on Mars and the Moon.

Oxydizer Units

In 2049, the Dutch-based *Geo-Dynamics Group* developed the first commercial Oxydizer Unit. This industrial-grade machine pioneered the purification of oxygen supplies for terraforming requirements. The portable machines are constructed from a modified kevlar base that weights in around 10kgs; the unit also uses solar cells to replenish its long-life batteries. The units were designed specifically for the European Space Agency and their plans to establish a long-term colony on Mars. These units work by extracting carbon from CO₂ in the surrounding atmosphere (95% of the Martian atmosphere).

The theory being that these light-weight devices could be continually ferried to the planet in question, and over a number of years, the planet will eventually be able to sustain life. The more units present, the sooner the habitation. Of course, this all depends upon other trace element chemicals not being harmful to humans.

A recent improvement, called the Oxyizer Nexus Unit also includes a filter mechanism that seeks to remove these other noxious trace elements, although this additional technology is still in its infancy.

The oxydizer technology has been successfully used on Mars and the atmosphere is currently breathable, but not yet fully implemented. The technology has also been successfully employed on spacecraft, helping to recycle oxygen.



SECURITY LOG FILES RECOVERED FROM NIPPON II MAINFRAME

These recovered files represent the only remaining uncorrupted data stored at Nippon II

Sunday 21st September 02:00 to 03:00 hours

Sensor Report: Malfunction of units A2, A3 and A5

Scout Report: Yumi Seiko ---audio file--- “The units are entirely burnt out, beyond repair. There is no suggestion of dust contamination, I recommend replacement of units to continue the glorious work of the Everlasting Leader”.

Requisition Request: 4 x Matsumi 43LSD Multi-function sensors – urgent tag attached

Tuesday 23rd September 13:00 to 14:00 hours

Engineering Report: Wang Li ---audio file--- “Trouble! Help Us! Explosion of reactor core - injuries, damage to transport, uncontrolled laser fire and radioactive waste dispersed. It’s impossible! All systems were normal then critical overload. I lay myself upon the mercy of the benevolent leader and beg eternal forgiveness!”

Fission Reactor e-tag: Critical Failure, error code#23 core capacity 1043% and rising \$\$#@

Tuesday 23rd September 16:00 to 17:00 hours

Engineer Report: Lucy Nakarta ---video file--- “The fission reactor is destroyed. There are too many bodies to bury, and we have found no signs of sabotage or foreign dust tracks. My recommendation is the complete abandonment of the reactor sight. Also, a nearby oxyizer unit has been destroyed, it appears to have blown up internally, this despite it being designed to work on low level solar power levels”. Footage is shown of a collapsed cave entrance and bodies, plus footage of a burnt out European Union made oxydizer unit.

Sunday 28th September 08:00 to 09:00 hours

Life Support Data Log: Temperature: -12° degrees and falling (Below Average) --- Oxygen: 63% (Serious) --- Power Level 35% (Critical)--- Radiation Level 07% (Above Average). Power outages in habitation sections 1, 3 and 4.

Commander Report: Takashi Wang User#23 ---corrupted audio file--- “Our base is lost. I have failed you my glorious leader, the blue assassins have blown up our remaining solar cells. ---10 seconds of corrupted static audio--- Avenge ours deaths!”

Sunday 29th September 12:00 to 12:09 hours

Computer Database Log: Database corruption, unable to process operation ‘doomsday device’ User #23 --- critical failure. Systems Error #99. System to abort and go offline in 20 seconds and counting.

Engineering Report: Jacki Song ---text file--- “complete loss of power, do not send reconnaissan&#dan%e\$#

CONFIDENTIAL EXECUTIVE LOG FILES FROM LITTLE BRITAIN'S CENTRAL REGISTER

The following files are reserved solely for access by section heads and executive personnel

Saturday 5th October

Engineering Report (Sachin Sharma): Beacon X-43 sensor has been replaced after an electrical fire. I have got the tech boys looking into it, as I'm concerned about the longevity of such units.

Tuesday 14th October

Engineering Report (Sachin Sharma): Beacon X-42, X-41 and X-39 have been replaced. They appear to have suffered the same type of damage as X-43. I have got some of the tech boys looking into the electrical cabling leading out to the mines, to see if the fault lies there (all beacons are powered by the same cable). I'm concerned also that we may have been sent a faulty batch of sensor units – it seems unlikely to be mere coincidence. Tech Anderson has reported that the X-43 beacon was destroyed by a sizable power surge.

Wednesday 15th October

Military Report (Declan Mackay): I'm unhappy to report continuing power surges experienced at Outpost Churchill. Can this please be looked at, as our continuing military testing requires continuity of service.

Governor's Report (Indira Bramley-Singh): Captain Mackay, your concerns have been noted and Sharma has been informed. Sharma has just reported a fatality, so your patience in this matter is required.

Engineering Report (Sachin Sharma): As reported, an electrician (Robin Tripp) has been electrocuted whilst undertaking repairs to the hopper transportation link between the main base and the military outpost – he was following up on erratic data generated from this line. I duly recommend the late Mister Beetle be afforded a commendation for his sterling service record, he was a careful and capable engineer.

Thursday 16th October

Medical Report (Augustine Morton): The autopsy has been completed on the late Mister Tripp. I conclude that he died of electrocution, not asphyxiation, as some have reported.

Engineering Report (Sachin Sharma): There are reports of power outages at *Camp Daffyd*, reports suggest that the generators are working fine there. At this time, we have no suggestions as to why electrical supplies are currently being affected. Although, the large spikes in power usage at Outpost Churchill might be putting additional stresses upon our fragile network.

Assistant Governor's Report (Robert Creevey): Big Doris wants u Love-Chunks, I'm in my office waiting!

Saturday 18th October

Governor's Report (Indira Bramley-Singh): 'Big Doris' was been spoken too about accidental cross-posts.

Military Report (Declan Mackay): Our usage rates are classified, and no further discussion will be engaged.

Agriculture Report (John Hodge): It has been reported that one of the plastic greenhouses has a large puncture and its internal fan has been burnt out. The plastic appears to have melted under the intense heat. Can Mister Sharma please take a look at it, urgently.

Monday 20th October

Police Report (Daffyd Jones): The man or woman known as Rosie Carbunkle (cross-dresser) has been killed at Camp Daffyd. The individual appears to have been electrocuted after using a faulty sex toy in her cabin. The 'white mouse' has been taken away for testing by Mister Sharma. People here are worried.

Governor's Report (Indira Bramley-Singh): I want the power situation stabilized once and for all, Mister Sharma! We are losing settler confidence. All departments are to render him total cooperation.

Sunday 26th October

Engineering Report (Sachin Sharma): The electrical cabling between the main base and the mines has been burnt out in several places. Testing is currently going on to see whether we can quickly reestablish the link, but I strongly suspect sabotage. A massive power surge was also experienced at the mines, moments before the outage. My fellow engineers are just as baffled as I. I am willing to resign my commission if the Governor sees fit.

Governor's Report (Indira Bramley-Singh): Can Mister Mackay confirm or deny reports of laser gunfire taking place near Outpost Churchill?

Military Report (Declan Mackay): I cannot. But I'll discuss the matter in private with you, if you wish.

FUN FACTS ABOUT MARS

An extract from the website <http://www.funfacts4kids.com> by Julian Rigley

Martian Alert! Martian Alert! There is life on Mars!



There are now over 5,000 life forms living on Mars, but thank your lucky stars that they aren't green with large luminous eyes and gnashing teeth, they're humans! A ten-man mission landed on the red planet in January 4th 2058. Since this auspicious date, both European and Japanese moon boots have trod on alien soil to help build a new home for humanity amongst the stars.

Basics

The planet of Mars is named after the ancient Roman God of War. It rotates around its axis every 24.6 hours. It is roughly half the size of Earth and about a tenth of its mass. Mars orbits around the Sun every 1.88 years. It has two heavily crated moons called Phobos and Deimos.

Weather

Because of the planets tilted axis and rather eccentric orbit, Mars has a short but relatively warm southern summer and a long but relatively cold southern winter. During late winter, the polar ice caps can extend down to the latitude of around 45° - doing the numbers that is almost 50% of its planets surface! Springtime signals the end of the long polar night, and the polar hoods dissipate to reveal the core frost cap. These polar caps consist of frozen water; the Southern one is 300km wide, and the Northern one is 1000km wide. In Autumn, the reddish brown oxidized surface material of Mars can whip up quickly into a ferocious dust storm, this material often settles in the air to form bright clouds over the twin poles.

Why the Rusty Color?

The reddish brown surface is made up of heavily oxidized basalt rocks, basically the rocks on the surface have rusted and dissipated over the entire planet. A mineral called *scapolite* is relatively rare on Earth, but is widespread on Mars; it serves as a store for some of the carbon dioxide that would otherwise add to the potent atmosphere.



Atmosphere

The Martian Atmosphere originally consisted of carbon dioxide (95%), nitrogen (2.7%), argon (1.6%), oxygen (0.2%) and trace elements of water vapor, carbon monoxide and other noble gases. The pressure on Mars is 0.6% of that of Earth, meaning that standing on its surface is like standing on a 35km tall mountain on Earth! Try running a 100 meters on the surface of the planet without passing out!

The surface temperature can vary greatly by up to 100 degrees (180° F) – so Martian mothers are right to insist their offspring take their coats along when they go outside to play! The average daily temperature doesn't generally exceed - 25 degrees. On barmy days it even reaches a staggering *zero* degrees (32° F)! This mainly occurs in summer – only travelling Eskimos tend to reach for the surfboards. The lowest temperature ever recorded is minus 106 degrees (-150° F). At the poles, the lower temperatures lead to carbon dioxide freezing into the white deposits that constitute the polar hoods.

The cold temperatures and slight atmosphere of Mars equates to a cold high-altitude desert here on Earth; the surface pressures present are way too low for water to exist in a liquid state. However, water does still exist far below the Martian surface.

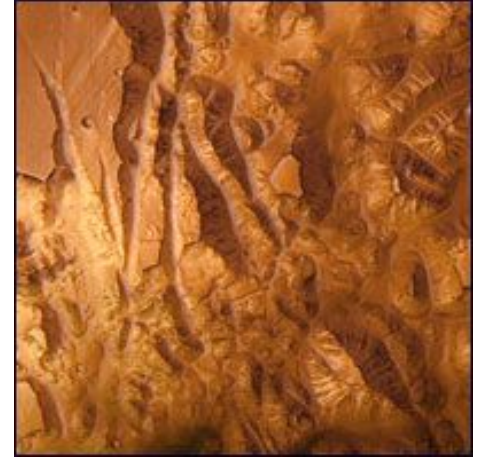
Savage dust storms whip the southern atmosphere between late spring and early summer, especially when Mars is near the Sun. These dust storms can obscure the entire planet's surface for weeks, or even months!

Surface

The Northern half of the planet is much less crated and pockmarked, it is believed that this section is much younger geologically speaking; it is thought to have been created by relatively recent volcanic flows. There are thought to be two major centers of prehistoric volcanic activity, one being Elysium Plateau and the other the Tharsis Bulge. Olympus Mons, an extinct basaltic volcano, reaches up to an elevation of more than 600km. It is believed that tectonic plate activity that once existed on the planet, is now dormant.

The surface is covered with valleys, mountains, ridges and dried-up riverbeds. Water was once plentiful on the surface before rampant greenhouse gas activity took its toll, the remaining atmosphere being boiled off into space, reducing the surface to a barren wasteland. The ice that forms at the poles generally drains from the higher southern hemisphere elevation, to the generally lower northern hemisphere one.

The Southern half of the planet is pockmarked with craters and most of the larger ones have been subsequently filled with the fine sands that circulate the planet.

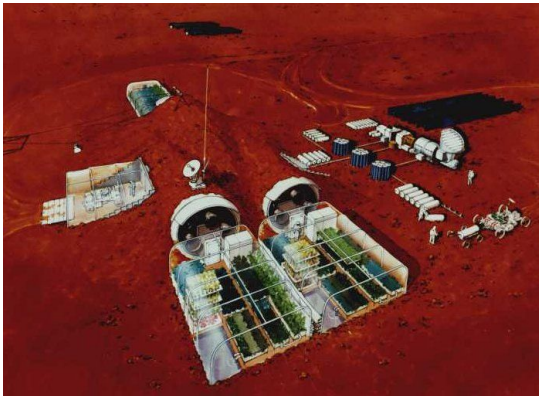
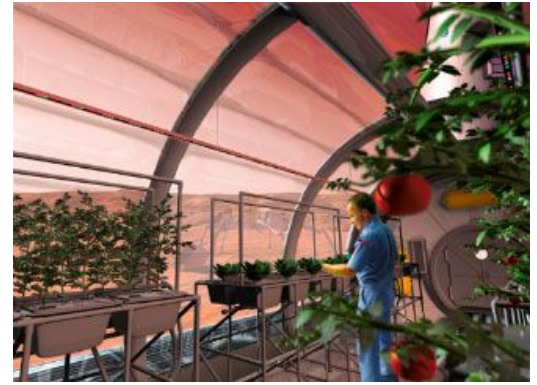


Life

Geological studies have proved conclusively that life never existed on Mars. Although water existed at the time the Martian surface was hot enough to support life, volcanic activity helped ensure a rapid rise in deadly greenhouse gas emissions (CO_2). Another problem was the inner-core of the planet appeared to have cooled at this time. There is no natural magnetic field on Mars, and therefore, solar radiation is not repelled; leading to further environmental destruction.

Terraforming

In recent years, the European Space Agency has transported *oxidizers* units to Mars. These portable machines convert Carbon Dioxide into Hydrogen Dioxide (water) and plain old Oxygen. This has helped to boost the oxygen levels present within the atmosphere; it is hoped that one day, the oxygen levels on Mars should be enough to fully sustain human life!



Future of Mars

It is hoped that one day that the small water deposits found within the polar ice caps will be utilized to reestablish the thin Martian atmosphere. The abundant mineral called *scapolite* is being closely examined to see whether it could be processed to augment future oxygen supplies. There are plans for two additional European Martian bases to house over 10,000 settlers. With the Earth gradually becoming inhospitable for human life, we may all one day become Martians!

The Cotswold Times, Monday 22nd September 2064

JAPANESE MARS BASE TERROR

Considerable alarm was raised in New Tokyo yesterday when transmissions were finally received from *Nippon II*, the Japanese Frontier Force's bio-dome base on Mars. Despite suggestions that the Japanese might have been experiencing satellite problems, it was revealed yesterday that the base had suffered a series of power surges that completely destroyed their internal power supplies. The entire population was forced to rely upon the thin atmosphere generated by oxyizer technologies, first established on Mars by the European Space Agency, six-years ago. As such, this incident constitutes the first successful test of the terraforming technologies to sustain life on another planet.

Despite the usual reticence of the Japanese Committee to engage their European Martian neighbors, engineers from *Little Britain One* were sent to aid in vital repairs to the ailing station. The unexplained power surges started on Monday and continued to blight the base, until a massive explosion occurred in the nuclear fission generator. To further compound the problem, the base was in shadow at the time, and therefore, unable to utilize backup solar cells. Some have speculated that a series of solar flares hit the base, but no such cosmic events have been measured back here on Earth.

The Everlasting Leader, Nakata Kee Song, has denounced the incident over state media as, "an act of cowardice and sabotage by our brothers, in defiance of our good faith, generosity and goodwill". The dictator has forbidden any talk of European assistance. It is not known if fatalities occurred, or the fate of the estimated 500 colonists.

The Cotswold Times, Tuesday 8th August 1995

ON THIS DAY: THE TRIAL OF LORD BARROW

On this day fifty years ago, the trial of local Lord Walter Barrow started at the Old Bailey. The 19th Lord of Barrowmere was charged with the heinous crime of conspiracy to murder eleven children and several counts of aggravated assault on a minor. At the time, this scandal made national news and gave the small village of Barrowmere unwanted infamy that attracted many ghoulish visitors. The macabre tale started during the war, when the Lord billeted over a dozen evacuated children from London at his ancestral Estate. It was alleged that pagan rituals took place at the Manor House that included the sacrifice of at least twelve children. The prosecution alleged that a coven of warlocks existed in Barrowmere with Lord Barrow at its head. It was suggested the poor children were bled slowly to death. Although there was ample evidence to suggest that Lord Barrow was the initiator of events, his Barrister, James Bartholomew, worked tirelessly to paint a picture of mentally unstable gentleman. The barrister suggested that Lord Barrow was in a feeble state of mind after the death of his father, that he was taken in by members of a coven who offered him guidance and kindness; they were then allowed to operate on his grounds with total impunity. He had effectively been cuckold. Controversy reigned when some of the alleged coven members changed their stories in the dock. Despite the Lord seeming to be headed for the gallows, he was quickly found to be criminally insane and sent to Bristol Asylum. His five fellow conspirators were found guilty and two of the men were hanged.

In 1960, Lord Barrow was aided and abetted in escape from Bristol Asylum and he hasn't been seen since. Speculation suggests that he has either fled the country, or committed suicide.



BARROWMERE VILLAGE

- | | |
|----------------------------------|--|
| 1. Barrowmere Catholic Cathedral | 7. Peckhurst House |
| 2. Barrowmere Primary School | 8. Barrowmere Green
+ Druidic Standing Stones |
| 3. Barrowmere Abattoir | 9. Frogmorton Estate |
| 4. The Black Swan Pub | 10. Barrowmere Police Station |
| 5. Barrowmere Blacksmiths | 11. Barrow Manor |
| 6. Barrowmere Shops | 12. Barrowmere Barrows |

BARROWMERE



COUNCIL
INITIATIVE



BARROWMERE VILLAGE

- | | |
|---------------------------------|---|
| 1. Barrowmere Church of England | 8. Barrowmere Green and Druidic Standing Stones |
| 2. Barrowmere Primary School | 9. Frogmorton Estate |
| 3. ARP Warden's Hut | 10. Barrowmere Police Station |
| 4. The Hangman's Pub | 11. Barrow Manor |
| 5. Barrow's Girl Reform School | 12. Barrowmere Barrows |
| 6. Barrowmere Shops | |
| 7. Barrowmere Estate Museum | |





BARROWMERE VILLAGE

- 1. Barrowmere Catholic Cathedral
- 2. Barrowmere Educational Hub
- 3. Barrowmere Spaceport
- 4. Black Swan Coaching Inn
- 5. Barrowmere Blacksmiths
- 6. Barrowmere Shops
- 7. Peckhurst Cottage
- 8. Barrow Green + Standing Stones
- 9. Frogmorton Estate
- 10. Barrowmere Police Centre
- 11. Barrow Manor
- 12. Ancient Barrows



BARROWMERE

VILLAGE SCENES



BARROWMERE CATHEDRAL



CATHEDRAL INTERIOR



BARROWMERE HIGH STREET



BLACK SWAN PUB



PECKFORD'S HOUSE



ARKWRIGHT'S GENERAL STORE



FROGMORTON ESTATE



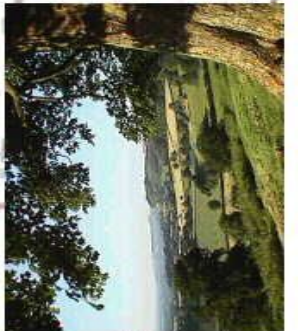
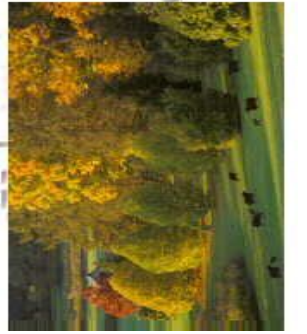
KULEY'S BLACKSMITHY

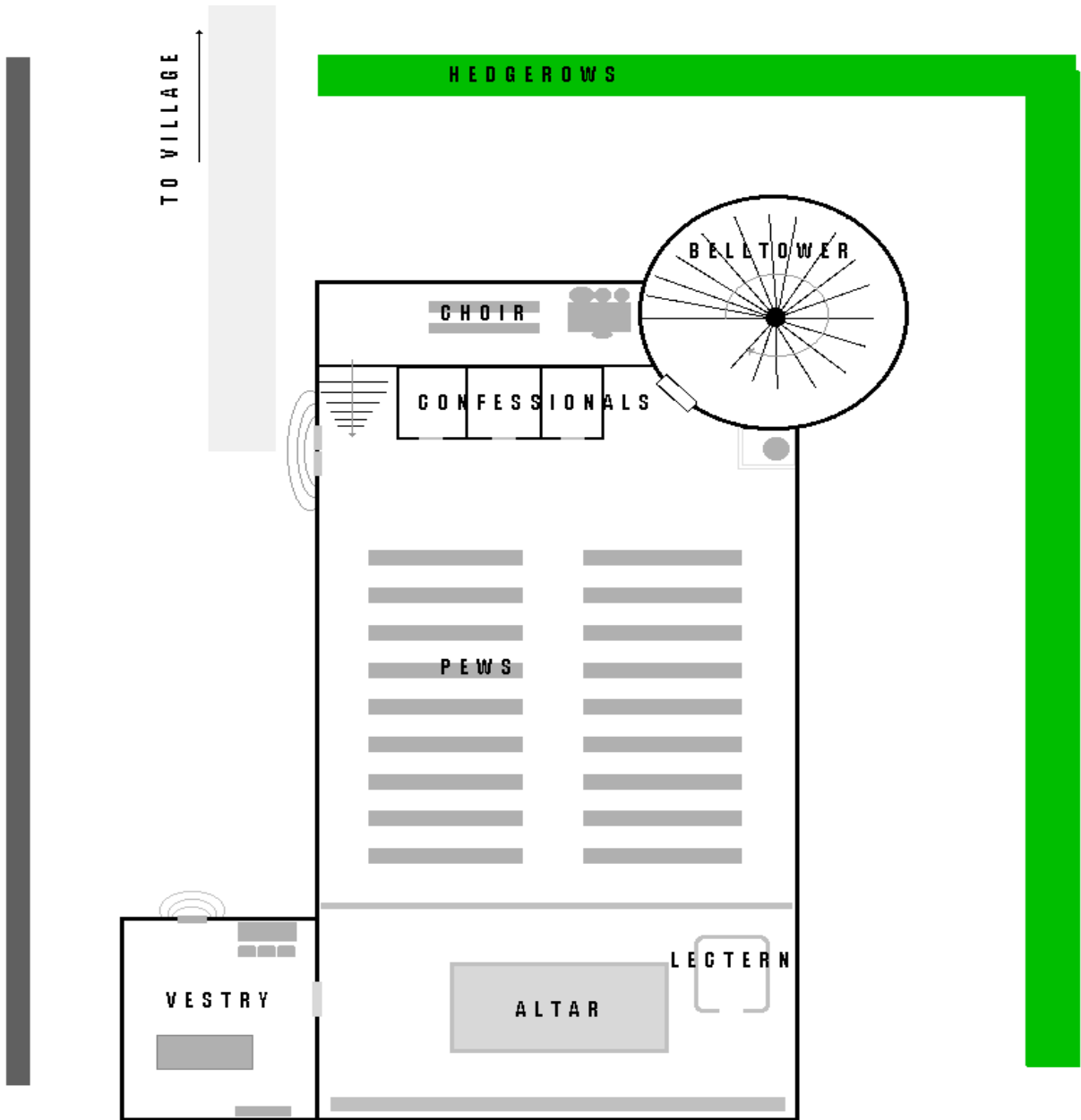


BARROWMERE ESTUARY



BARROW MANOR

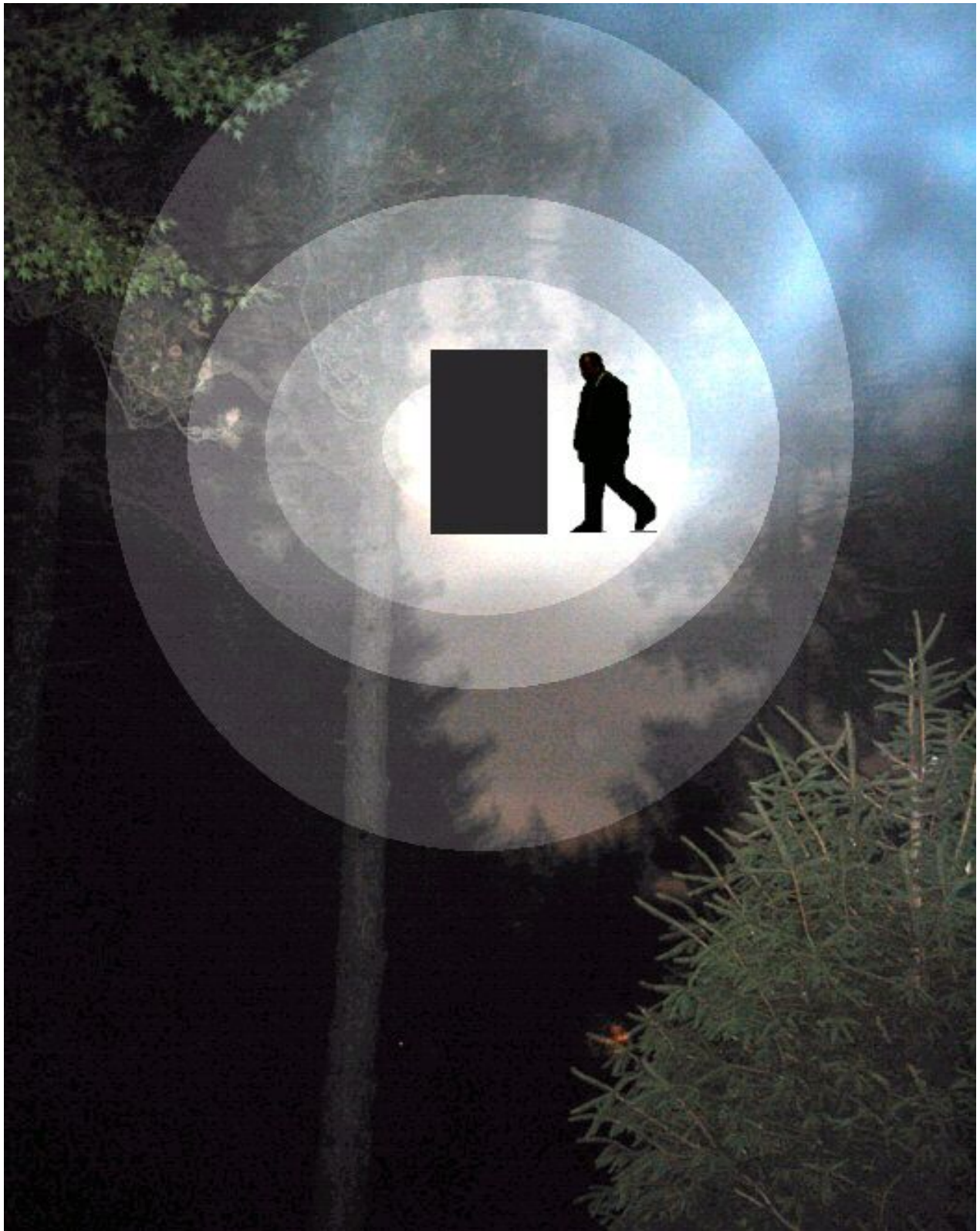


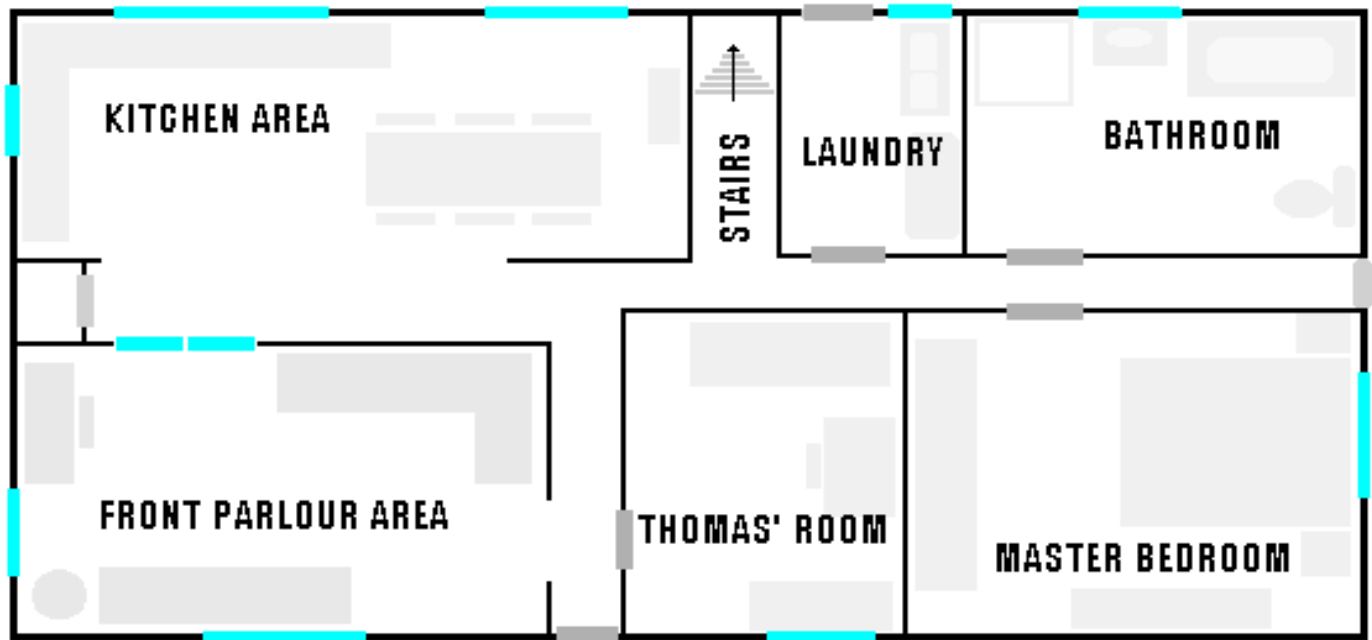


← TO SCHOOLYARD

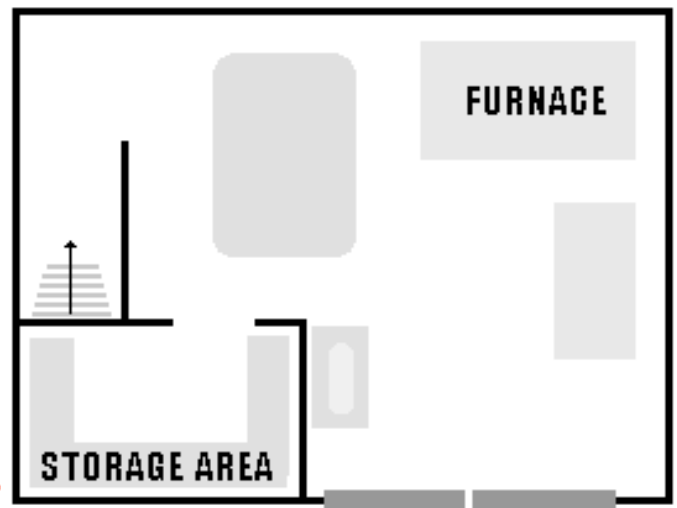
GRAVEYARD





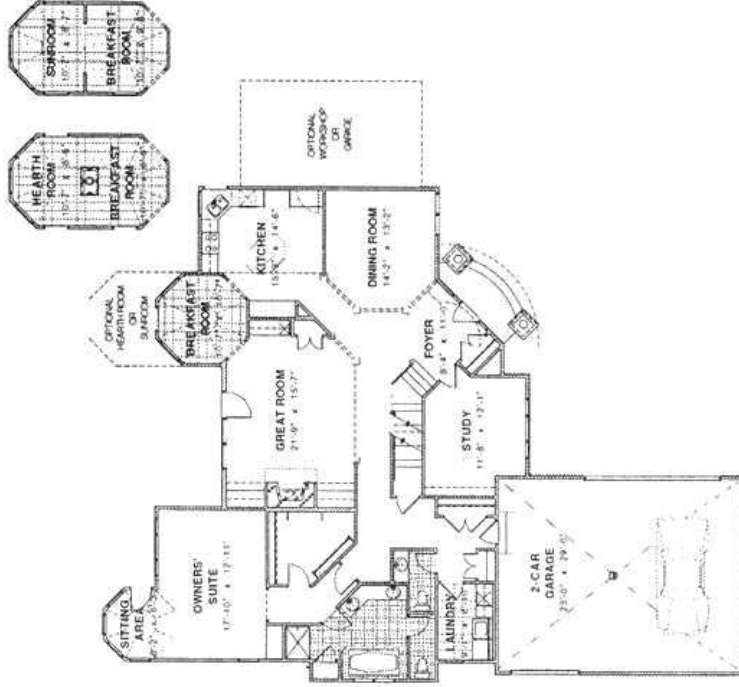


LIVING QUARTERS - UPPER LEVEL

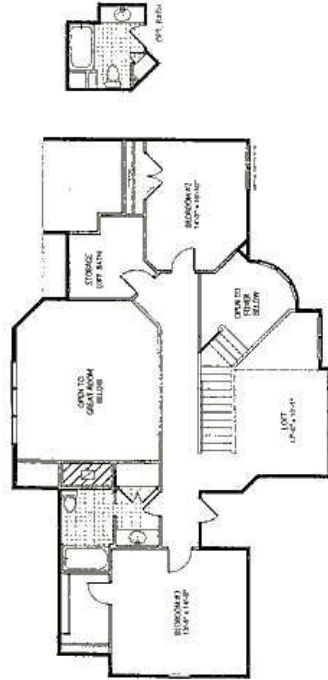


BLACKSMITHY - LOWER LEVEL



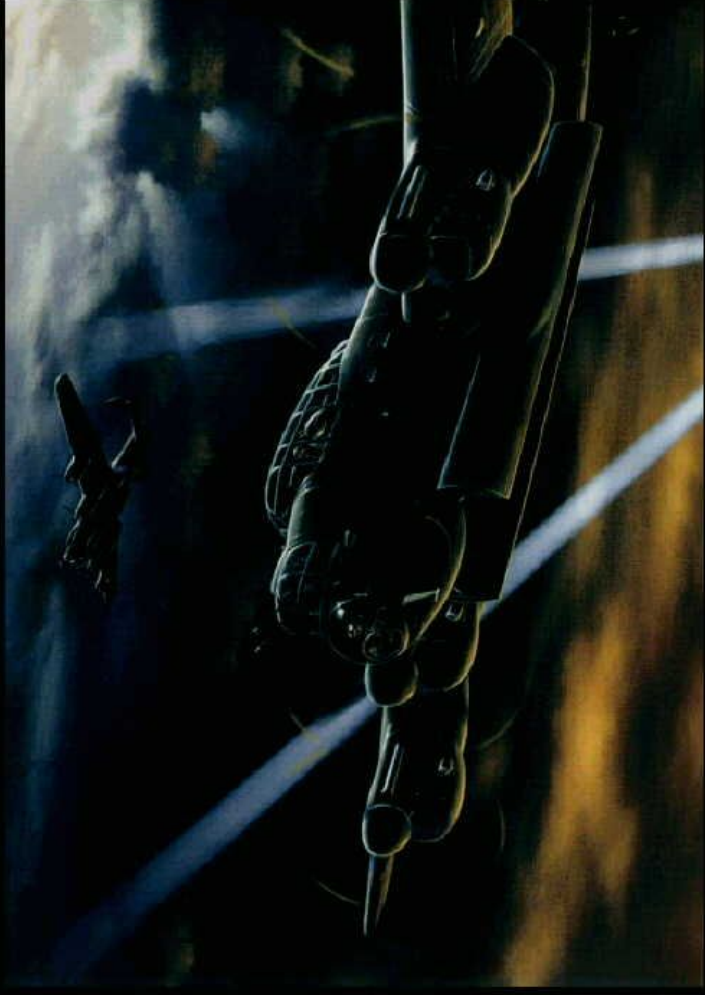


FIRST FLOOR PLAN



SECOND FLOOR PLAN

BARROWMERE NIGHT LINER FIRE



DOCTOR CARROT
guards
your Health

53 7382 BC
WAR RATION BOOK No. 9
MINISTRY OF FOOD
1953-1964

For Mrs. M. F. ...
128 ...

LOCAL SHOP ...

1	2	3	4	5	6	7	8	9	10	11	12	13	14	15	16	17	18	19	20
21	22	23	24	25	26	27	28	29	30	31	32	33	34	35	36	37	38	39	40
41	42	43	44	45	46	47	48	49	50	51	52	53	54	55	56	57	58	59	60
61	62	63	64	65	66	67	68	69	70	71	72	73	74	75	76	77	78	79	80
81	82	83	84	85	86	87	88	89	90	91	92	93	94	95	96	97	98	99	100

MINISTRY OF FOOD
1953-1964

MF

RATION BOOK

MINISTRY OF FOOD
1953-1964

BU 452903

Address: 117 Lane ...

CLOTHING BOOK

MINISTRY OF FOOD
1953-1964

Address: 117 Lane ...

in a raid -

Do not rush, take cover quietly, then others will do the same.



CHILDREN
are safer in the country
leave them there



WOMEN'S LAND ARMY

Join the
WOMEN'S
LAND
ARMY

It might be YOU!
CARING FOR EVACUEES IS A NATIONAL SERVICE



For a healthy, happy job

Keep it under your hat!

BE CAREFUL WHAT YOU SAY

Don't forget that what you say matters



THIS HAPPENED

FORGET THE HOUSEHOLD

JUST IN CASE

KEEP YOUR RATION BOOK WITH YOU

Buy your vegetables all the year round

DIG FOR VICTORY NOW



BARROWMERE

WORLD WAR TWO



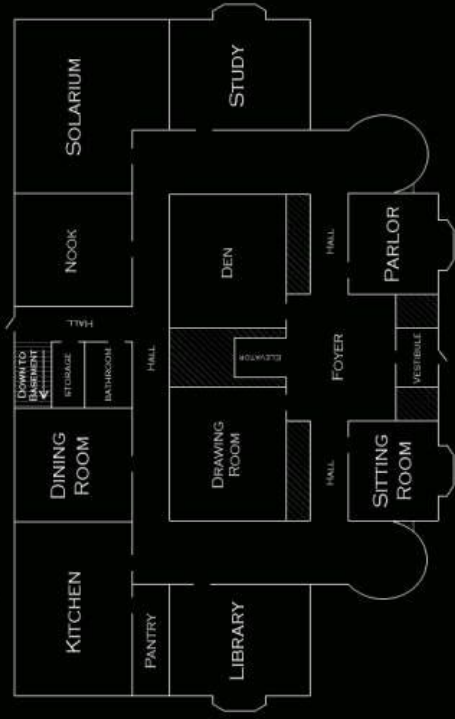
BARROWMERE

MANOR HOUSE

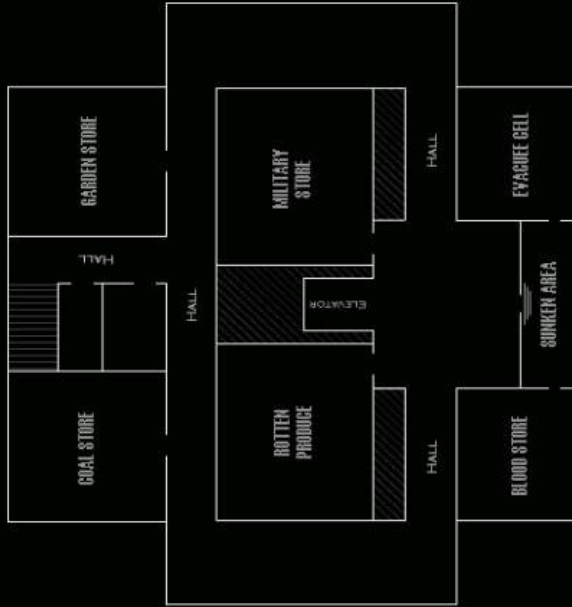
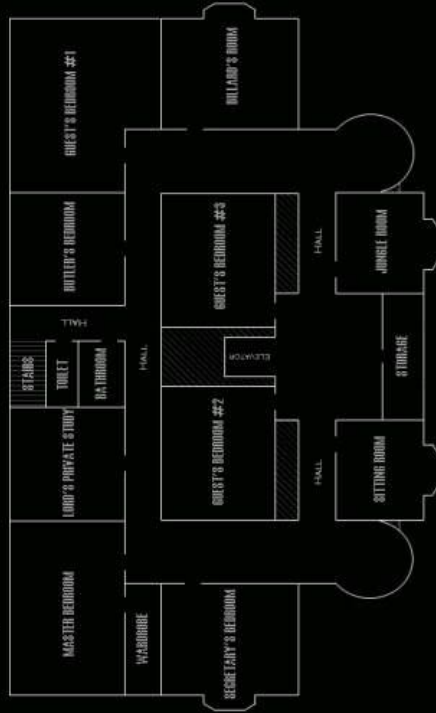


B.A.S.E.M.E.N.T.

GROUND FLOOR



1ST FLOOR



BARBOWMERE SCENES 2024



EDUCATIONAL HUB



SCHOOL CONSOLES



IXYZIZER



TENNIS ADVERTISEMENT

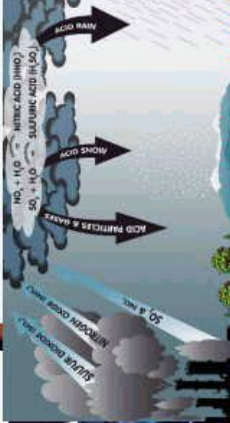
MOONBASE BLAIR ONE



ROCKET HANGAR



MARS GREENHOUSE



GREENHOUSE GASES

SUBSTATION

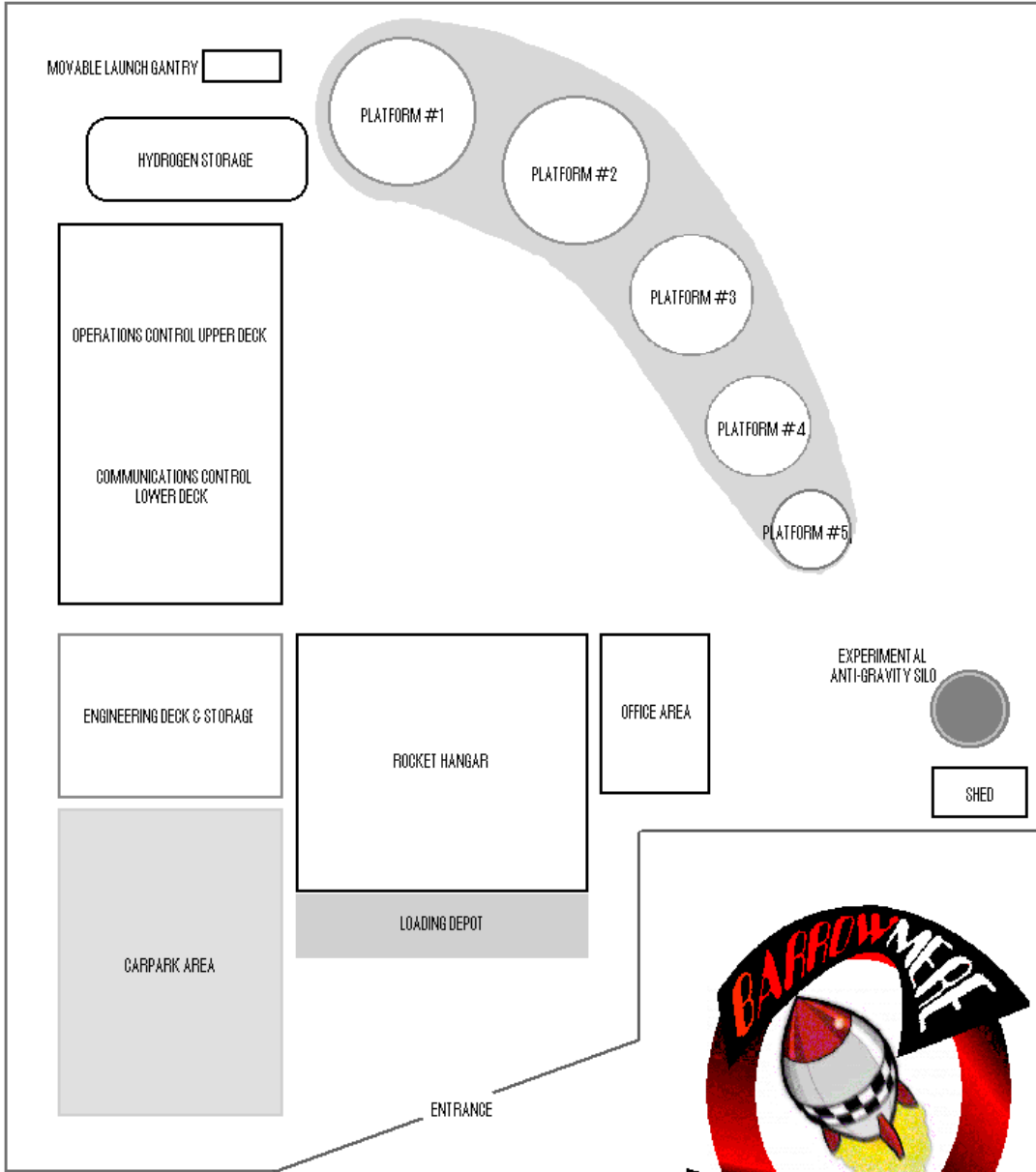


THE FUTURE IS NOW



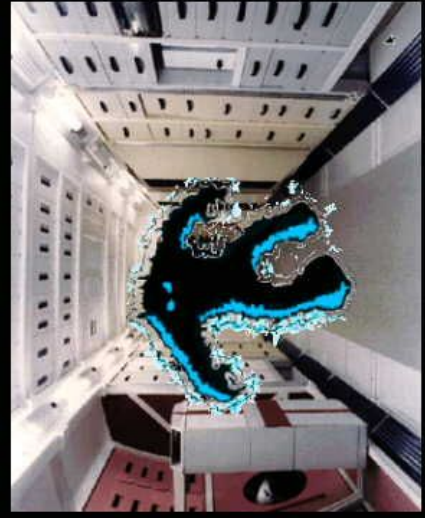
Freddie Matzeoni Excelsior X-S HOPPER CAR







BARROWMIRE DISCOVERY OF THE ALIENS



Barrowmere Festival of the Straw Weavers

BARROWMERE

FESTIVAL OF THE STRAW WEAVERS



The events leading to the end of the world

1st May 2004

Early Afternoon, The death of the local midwife/doctor by a speeding car outside the general store

Late Afternoon, The disillusionment of the local priest

2nd May 2004

Early Morning, The murder of the local veterinarian by thieves

Late Night, Hay bails set alight by teenagers at an all night party

Midnight, The birth of a two-headed lamb at the same farm

3rd May 2004

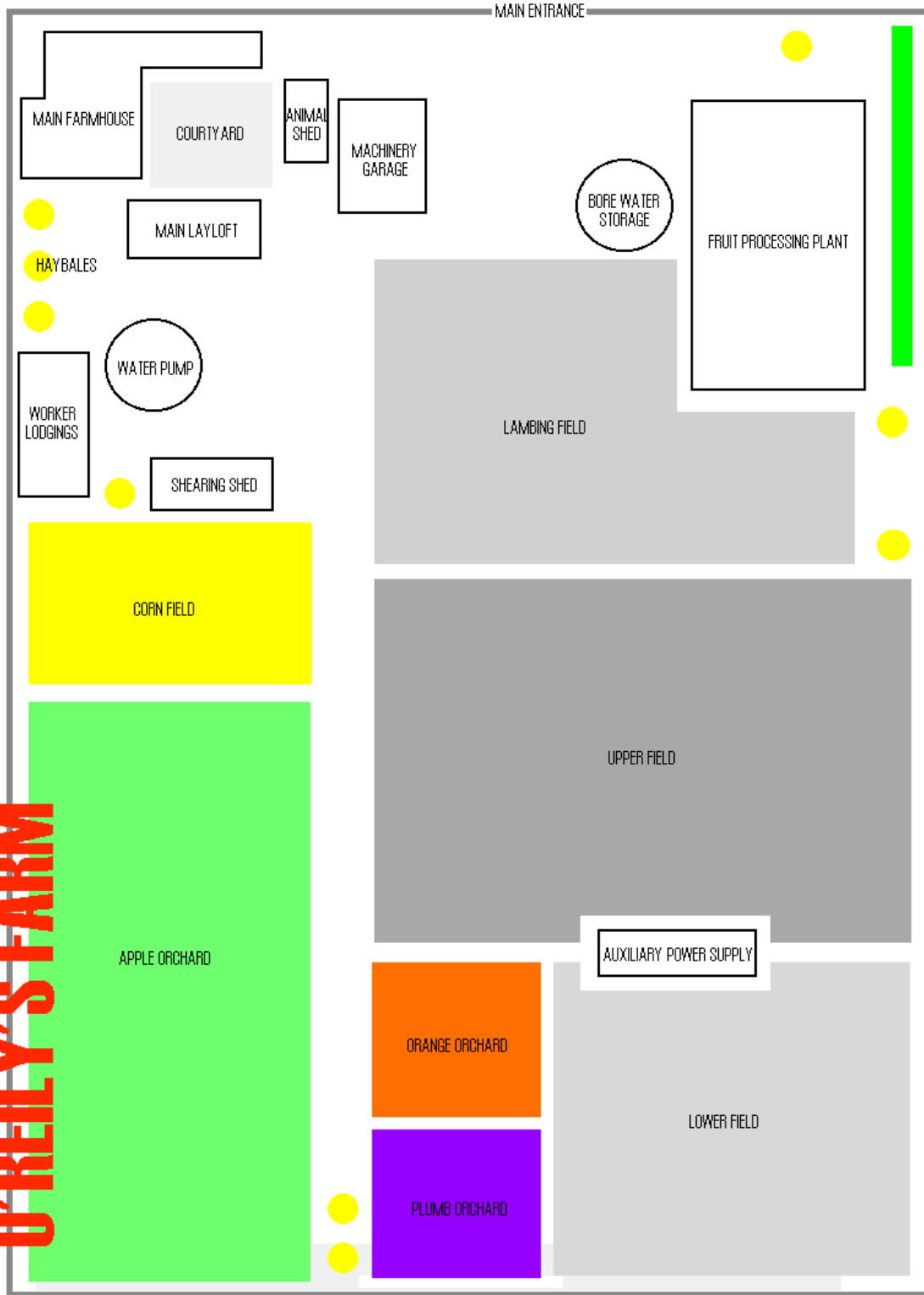
The cry of the Golden Cockerel, Vithofnir will sound

ILLUMINATED UNDER ULTRAVIOLET LIGHT
EVANGELION THOMAS

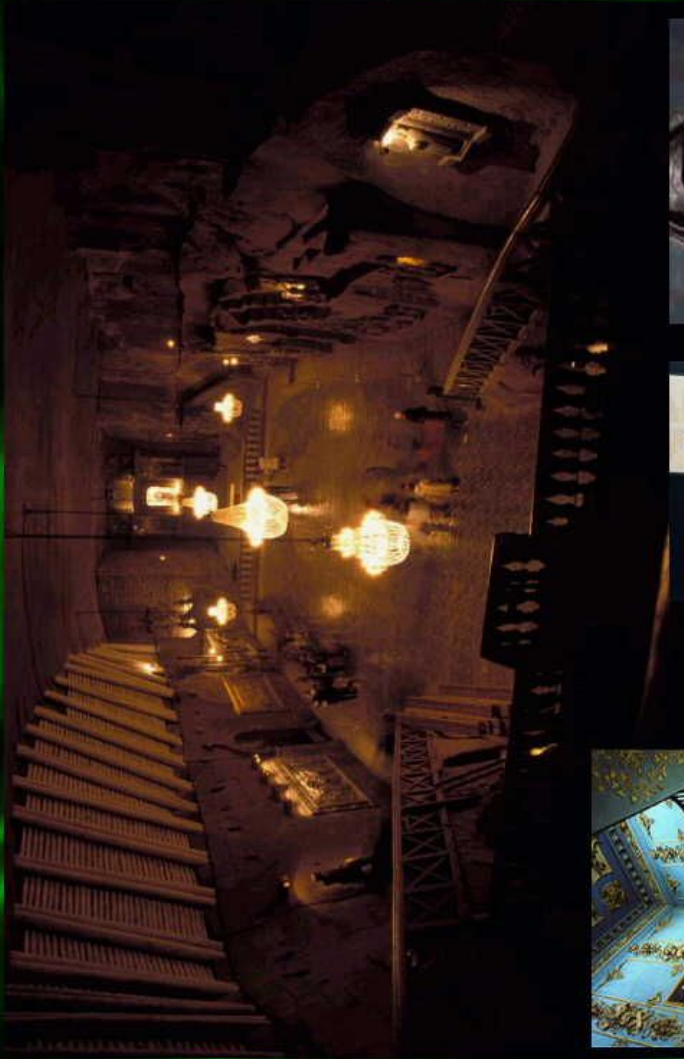
Dear Mabon, you must seek out the
Hollow Hills once the lamb is born,
my beloved.

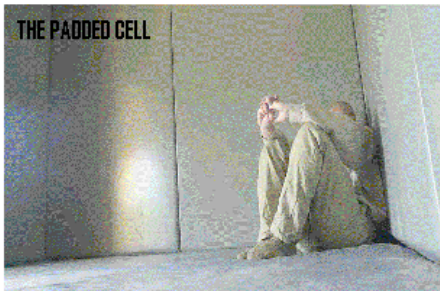
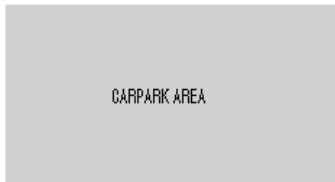
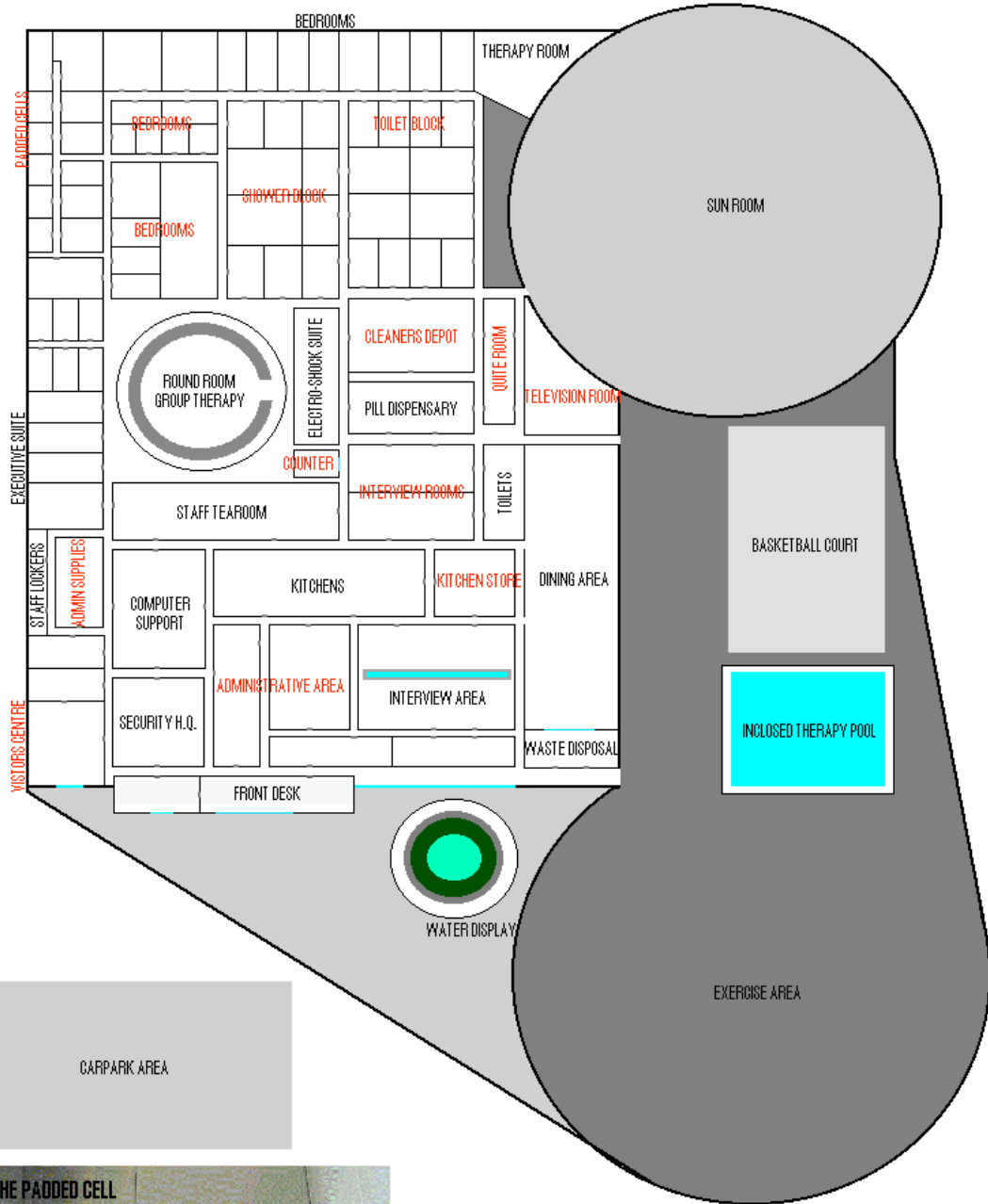


O'REILLY'S FARM

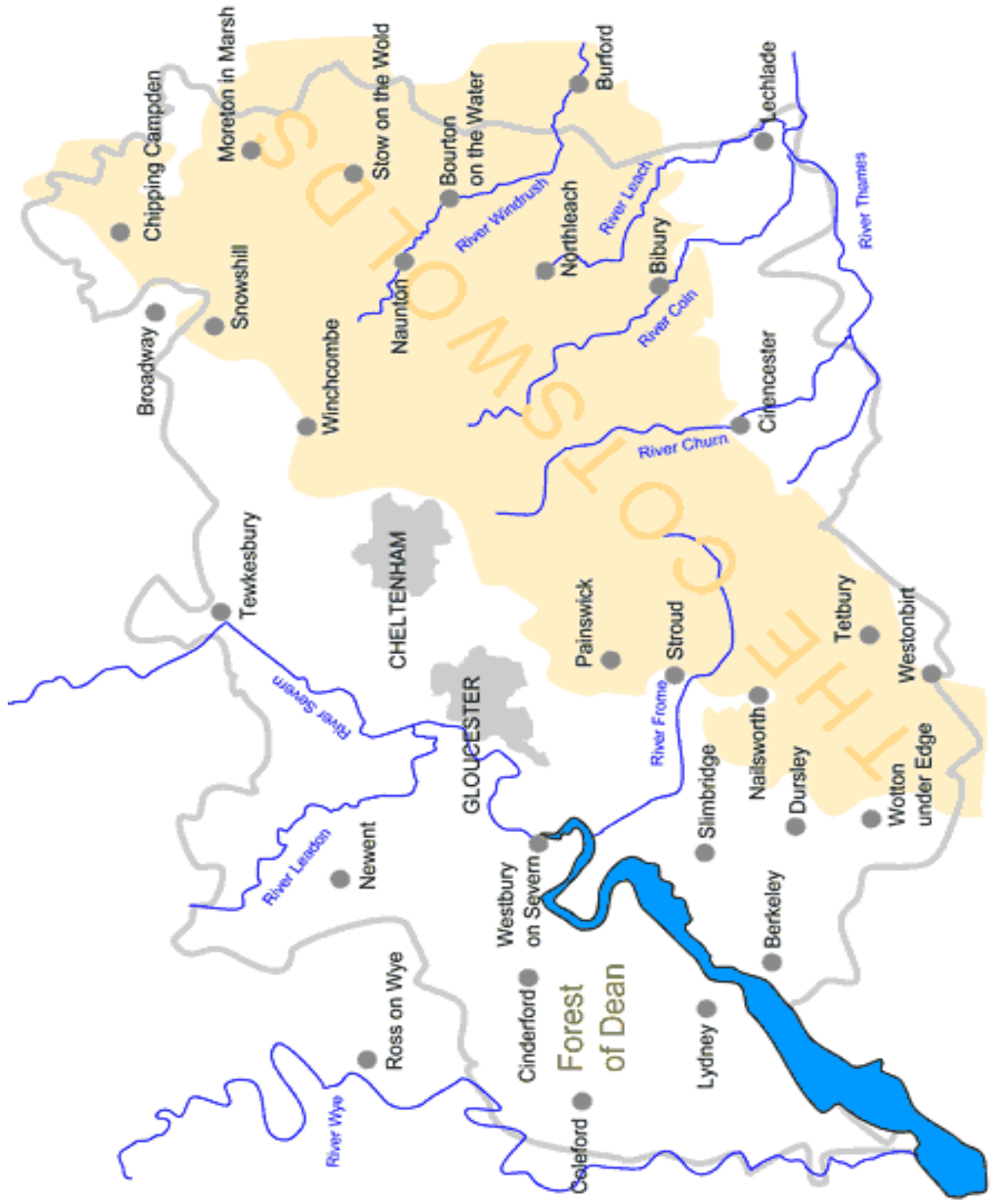


THE SEEDLING COURT





BRISTOL ASYLUM





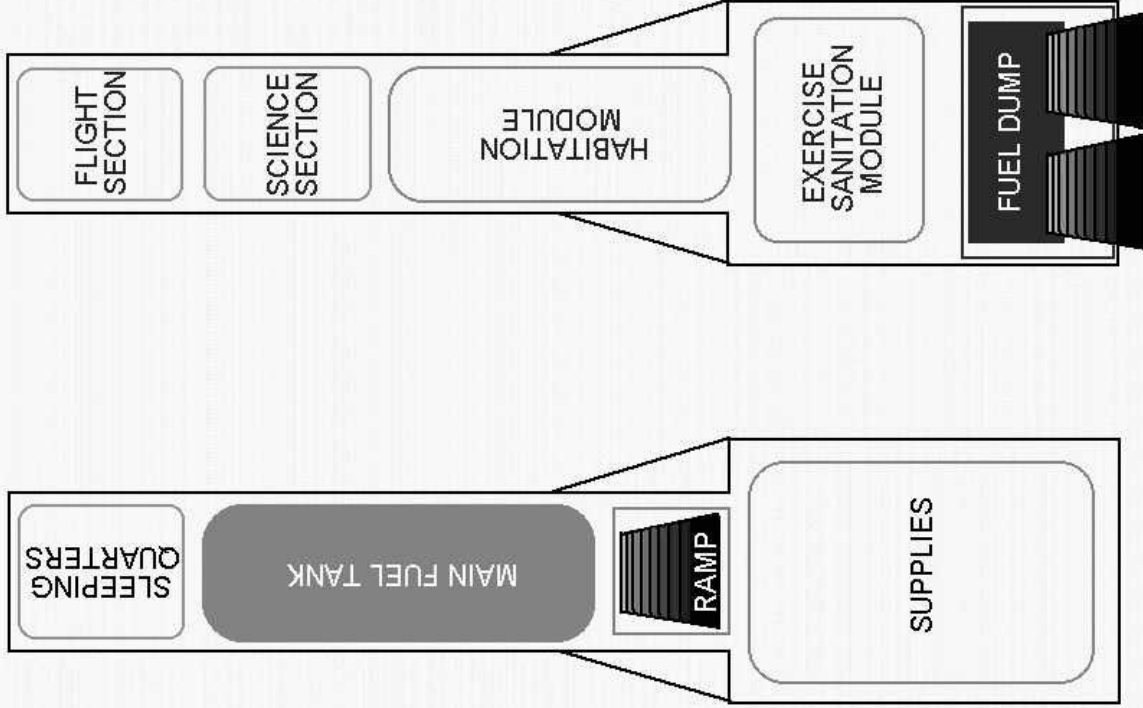
CHIRAC ONE ROCKET

SPECIFICATIONS

- TOTAL CREW REQUIRED: 4
- TOTAL PASSENGERS: 12
- LENGTH: 40m WIDTH: 4m
- TRAVEL TIME: 4 months return to Mars
- TOTAL PAYLOAD: 40,000 KGS

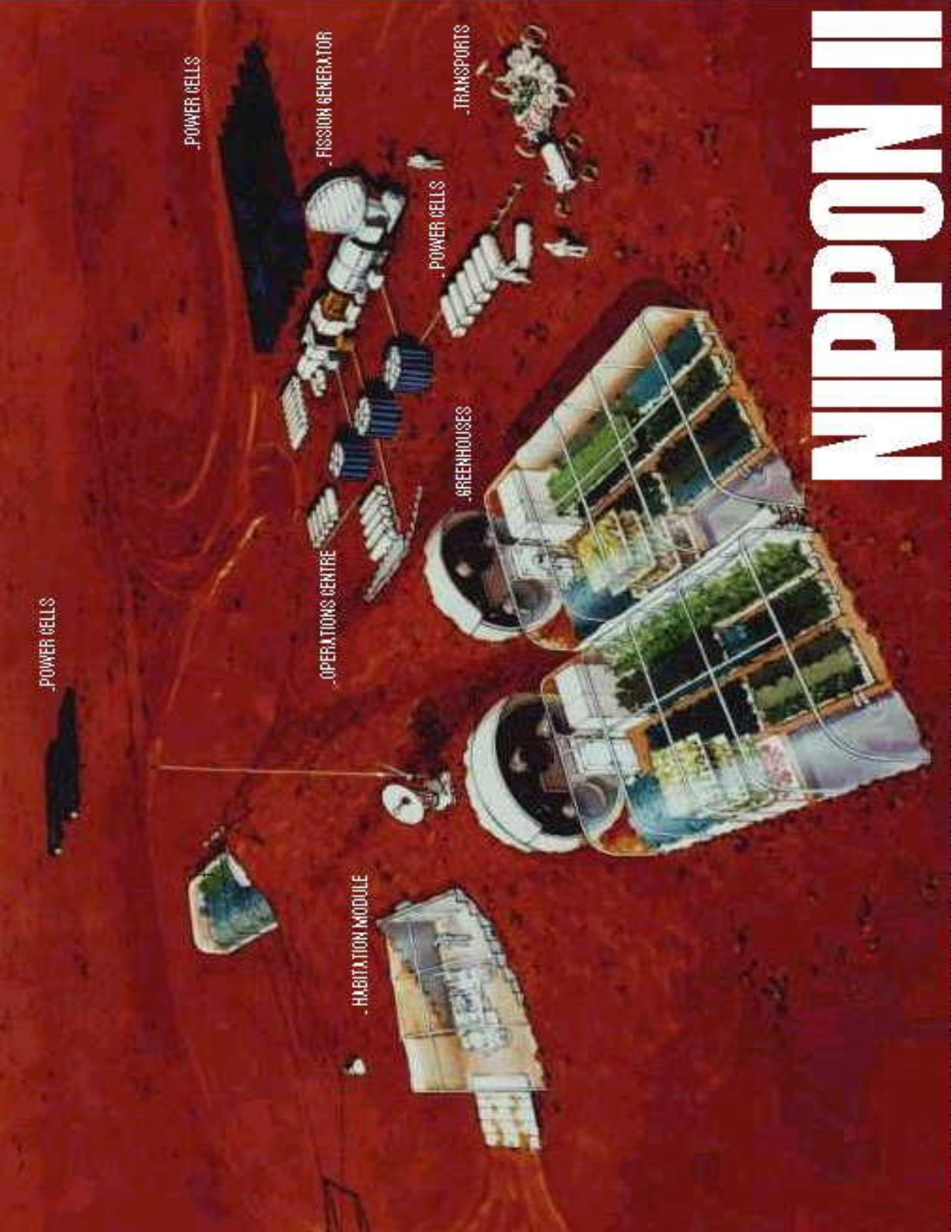


MAKING THE FUTURE A REALITY **EUROSPACE**

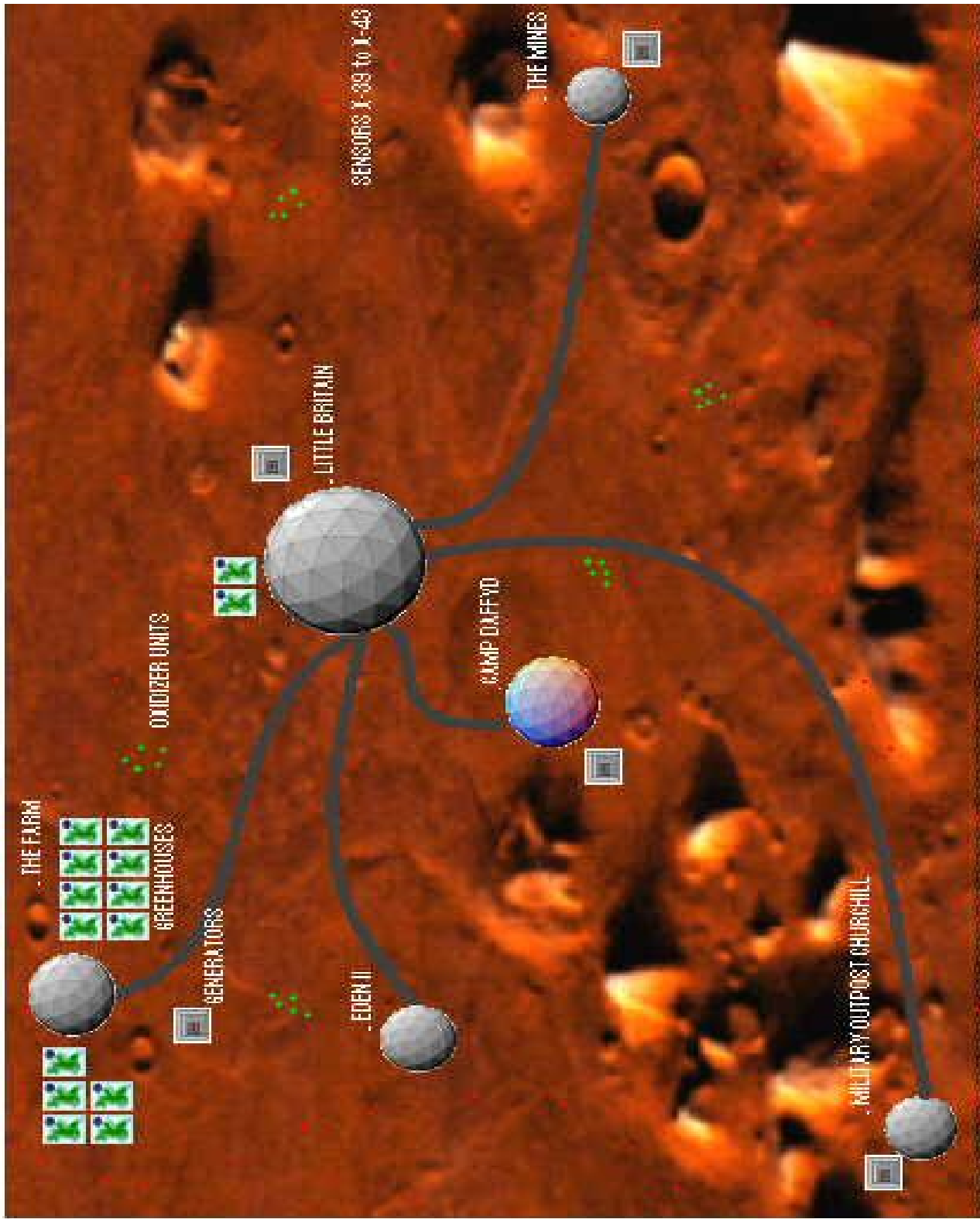


MARS SCENES





NIPPON II



BARROWMERE FAMILIES

PECKHURST FAMILY



Tony Peckhurst
Voice-Over Actor



Dervla Peckhurst
Children's Book Editor & Mother

RILEY FAMILY



Jack Riley
Local Blacksmith



Heather Riley
His Late Wife

FROGMORTSON FAMILY



Richard Frogmortson
Merchant Banker



Juliette Frogmortson
Socialite/Homemaker

BARROWMERE PRIMARY SCHOOL



Mister Gary Strang
School Principal



Miss Eliza Ricketts
School Teacher



Mister Rupert Giles
School Librarian

BARROWMERE CATHOLIC CHURCH



Father Stephen Laycock
Local Catholic Priest



Mister Cecil Wilt
Church Handyman

BARROWMERE POLICE STATION



Constable Matthew Broadhurst
Local Police Authority



Detective Constable Neil Perry
Regional Investigative Detective

BARROWMERE LOCAL GRADERS



Robert Arkwright
Arkwright General Store



Benny Mandelson
Mandelson Motors
(Youth & Seniors Football Coach)



Dennis Walters
The Black Swan Pub Proprietor



Graham Sutherland
Cotswold Fine Antiques



Dylan Black
Barrowmere Books



Cecily Moon
Wicca Wares To Go



Cherie Heltzfurt
Barrowmere Teahouse



Nitin Ramesh
Sterling & Sons' Butchers



Major Alexander Mortson
Retired Major
Head of Chamber of Commerce

BARROWMERE MANOR



Lord Hugh Barrow
Businessman & Local Lord



Mister James Masters
Lord's Private Secretary

OTHER BARROWMERE LOCALS



Miss Stephanie Lewis
Popular Local Schoolgirl



Mr. Malcolm Lewis
Father & Local Factory Foreman



Mrs. Jane Lewis
Mother of Stephanie/Homemaker



Miss Adrienne Welsh
Late Sister of Dervla Peckhurst



Harold Corbett
Retiree & Amateur Magician



Todd Blakehurst
Legendary 1950's Blackburn Striker



Thomas Roach
Local Dairy Farmer



Miss Daisy Meadows
Reporter for Cotswold Times



Mortimer Weekes
Local Village Handyman



Seamus O'Reilly
Local Farmer's Son



Dirk Maggs
Local Veterinarian



Dr. Mary Burton
General Practitioner

BARROWMERE MANOR 1944



Lord Walter Barrow
Businessman & Local Lord



Albert Frogmortsen
Lord Barrow's Personal Gentleman



Rosemary Weekes
Lord Barrow's Secretary

BARROWMERE HOME GUARD 1944



Ret. General Wilson Arkwright
Home Guard Commander



Corporal Timothy Jones
Seconded British Army Infantry



Harold Corbett
Local ARP Fire Warden

BARROWMERE CIVILIANS 1944



William Riley
Evacuated London Schoolboy



Father Eamon O'Shea
Local Parish Priest



Constable Rodney Baldwin
Local Police Authority



Mrs. Mavis Willets
Willet's General Store



Mr. Andrew Staunton
Proprietor of Black Swan Coaching Inn



Miss Zoe Nixon
Area General Nurse



Mrs. Prudence Rattighan
Reform School Head Mistress



Mr. Dirk Maggs
Manor Stable Boy



Miss Alice Croft
Homemaker & Spiritualist

BARROWMERE FAMILIES 2024

PECKHURST FAMILY



Tony Peckhurst
Voice-Over Actor



Dervla Peckhurst
Children's Web Editor & Mother

RILEY FAMILY



Jack Riley
Local Aerospace Entrepreneur



Emiliana Eriksson-Riley
New Swedish Wife/Model

FROGMORTSON FAMILY



Richard Frogmorton
Merchant Banker



Juliette Frogmorton
Socialite/Homemaker

BARROWMERE EDUCATIONAL HUB 2024



Mister Gary Strang
School Principal



Miss Eliza Ricketts
Learning Facilitator



Mister Rupert Giles
Data Store Administrator

BARROWMERE SPACEPORT 2024



Ret. Captain Adrienne Welsh
Former Astronaut/Entrepreneur



Miss Christine Alexia Smythe
Personal Secretary P/A



Mister Roddy Masters
Head of Engineering

BARROWMERE POLICE STATION 2024



Constable Matthew Broadhurst
Local Police Authority



Detective Inspector William Shakespeare
Police Criminal Investigations

BARROWMERE LOCAL TRADERS 2024



Robert Arkwright
Arkwright'a General Store



Benny Mandelson
Mandelson's Used Hoppers
(Youth Zero-G Football Coach)



Dennis Walters
Black Swan Coaching Inn Proprietor



Nitin Ramesh
Sterling & Sons Butchers



Graham Sutherland
Cotswold Fine Antiques



Dylan Black
Black-Hole Books



Martina Moon
Wicca Wares To Go



Delia Rose Bunbury
Barrowmere Fine Faire



Doctor Amanda Braithwaite
General Practitioner & Mayor



Father Stephen Laycock
Cathedral's Catholic Priest



Rodney Smith
Local Handyman & Spiritual Leader



Reginald Wilson
C.E.O. Space-Leisure Industries

CHIRAC ONE SPACECRAFT 2064



Douglas Herriot
Commander/Systems Analyst



Sally Churchill
Science Officer



Wasim Hafeez
Flight Control



Olga Markovski
Engineering Officer

LITTLE BRITAIN MARSBASE 2064



Indira Bramley-Singh
Governor of Mars



Robert Creevey
Lead Architect/Assist Governor



John Hodge
Head of Agriculture



Sachin Sharma
Head of Engineering



Officer Daffyd Jones
Mars Police Authority



Captain Declan Mackay
European Military Intelligence



Annette Higginbottom
Head of Catering



Officer Astrid Houllier
European Space Police Corps



Pamela Merryfield
Public Relations Expert



Yuki Seo
Geologist from Nippon II

ASSORTED VISITORS



Mr. Elliot Havers
Antiques Valuator



Miss Nadine Stewart
Insurance Industry Secretary



Mr. Clarence Collins
Security Technician



Dwight Ferdinand
Dance Promoter/Uni Student



Rebecca Hamilton-Smith
M.C. Boot-E-licious/Waitress



Raif Barrow
University Student/Prodigal Son



Imogen Fox
Journalist Time Out Magazine



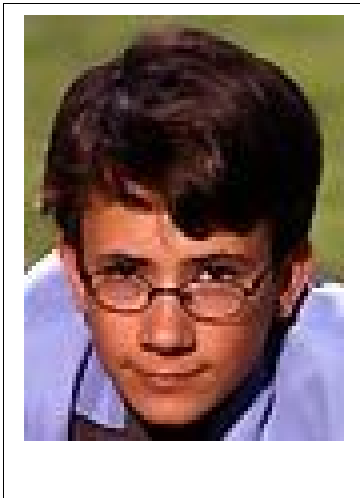
Wally Stubbs
D.J. Dizz-E Devil



Martin Kerr
Public Relations Consultant

THE BARROWMERE CHRONICLES

Name	THOMAS RILEY		
Date of Birth	01/12/1991		
Sanity	5	—	—
Wounds	5	—	—
Talents	_____		



Weekly Allowance	£2.00
Inventory	_____

Athleticism	2	Awareness	5
Beauty	3	Brains	3
Computer Usage	1	Constitution	3
Conversation	2	Intuition	5
Luck	4	Lying	3
Mechanical Apt	4	Sneaking	3
Strength	3	Willpower	4

Thomas Riley - Thomas is the son of the local blacksmith, Jack Riley. His mother Heather died when he was a baby, although Thomas rarely likes to think about it now. His father is a strict disciplinarian and often beats him. His father is often drunk and angry, Thomas rarely knows why. Thomas does most of the domestic chores and helps his father with his smithy duties. Thomas often thinks 11 year olds shouldn't bear such burdens, but there is little he can do about it.

Thomas enjoys school and the learning process, he can often be found in the library enjoying pleasant conversations with friends. He likes to think one day he could become a fantasy or sci-fi novelist. He has no living grandparents and sometimes feels sad when others talk of their happy families. He enjoys playing sports, but lacks the physical coordination to really excel.

Thomas enjoys gardening and pottering around the back shed. He would love to keep animals, but isn't brave enough to ask his father. He manages to get by rambling through the countryside experiencing all of nature's wonder.

OTHERS

Stephanie Lewis - Is your best friend in the whole world, you can tell her anything! She always knows when you are upset and goes out of her way to make you feel better - she is like your Guardian Angel.

Ryan Peckhurst - You wish you could be as good at football as Ryan. Ryan is really cool and all the girls adore him. You would like to hang around with him, but he is a senior boy.

Laura Peckhurst - The sister of Ryan is the School Captain and is a mathematics genius. She is always pleasant to you and makes you laugh.

Rodney Frogmorton - *Froggy* is a mate, you are in the same year and you love going over his house after school to play on his *X-Box* and other toys. His mother is always feeding you and saying you look too thin!

Imogen Frogmorton - Imogen is really, really nice. One day you might marry her if you can get over the age barrier (she is 1½ years younger). She always laughs at your lame jokes, and stands up for you in the playground.

THE BARRROWMERE CHRONICLES

Name	RYAN PECKHURST		
Date of Birth	23/06/1989		
Sanity	5	—	—
Wounds	5	—	—
Talents	_____		



Weekly Allowance	£10.00
Inventory	_____

Athleticism	5	Awareness	3
Beauty	4	Brains	3
Computer Usage	1	Constitution	4
Conversation	3	Intuition	2
Luck	2	Lying	2
Mechanical Apt	1	Sneaking	3
Strength	4	Willpower	3

Ryan Peckhurst - Ryan dreams of playing football for England, and has some natural ability. At fourteen, he has had interest from Halifax Town F.C and last summer attended their youth training camp. He has little interest in academic progress. His mother, Dervla is a homemaker and talented children's book artist. Less than six months ago she lost her only sister, Adrienne Welsh to breast cancer. He tries to help her, despite not knowing what exactly helps.

His father is the irrepressible and excitable Tony Peckhurst; an actor who after a career of minor television roles has landed the plum role of voicing the popular children's animated series called *Bob the Burglar*.

Between Ryan and his father they do their best to give comfort to Dervla.

OTHERS

Stephanie Lewis - Stephanie is someone who has teased and flirted in equal measures with Ryan since puberty. She doesn't go all *goggle-eyed* like a lot of the other girls just because he can kick a ball around a park. Ryan has for the last six-months hoped to pluck up the courage to ask her out - once ringing her up at home, panicking, and then slamming the phone back down.

Laura Peckhurst - Is Ryan's slightly older and blessed sister. They get along famously for siblings and Ryan is highly protective of her. She has won awards for mathematics and is the School Captain (apparently she inherited the brains). She is as equally outgoing as Ryan.

Thomas Riley - Is the weird nerdy-kid always trying to make conversation with Ryan and trying to get onto the school football team. The sports master usually humors him, and shoves him on the subs-bench.

Rodney Frogmortson - Is a new kid to the school whose parents are apparently rich merchant bankers. The brash young boy's antics really get on Ryan's nerves.

Imogen Frogmortson - Imogen is the younger sister of Rodney. Of the little contact Ryan has had with her, she seems to be pleasant enough young girl.

THE BARROWMERE CHRONICLES

Name	LAURA PECKHURST		
Date of Birth	01/12/1988		
Sanity	5	—	—
Wounds	5	—	—
Talents	_____		



Weekly Allowance	£10.00
Inventory	_____

Athleticism	3	Awareness	3
Beauty	4	Brains	5
Computer Usage	3	Constitution	2
Conversation	3	Intuition	5
Luck	4	Lying	1
Mechanical Apt	1	Sneaking	2
Strength	2	Willpower	2

Laura Peckhurst (School Captain) - Laura is a confident and outgoing 15-year-old who knows where she is headed. She has won a series of competitions at school for mathematics and hopes one day to complete studies in physics at one of the top Universities (Oxford or Cambridge), and then going to work for NASA. The A-type personality can be a tad condescending to those younger or less knowledgeable than her (the dreaded school captain disease).

Laura enjoys the company of good friends. Gossiping about celebrities, guys at school and about the latest fashion trends is her one and only true vice.

Her mother Dervla is a home-maker and also a talented children's book artist. Less than six months ago her mother lost her sister, Adrienne Welsh to breast cancer. Laura has taken upon her self to care for her mother through these difficult times. Her father is the irrepressible and excitable Tony Peckhurst; an actor who after a career of minor television roles has landed the plum role of voicing the popular children's animated series called *Bob the Burglar*.

OTHERS

Stephanie Lewis - Stephanie is probably your best friend at school. She is always reliable and looking out for you. You have recently been allowed more independence to go into Bristol to see bands play, usually with Stephanie.

Ryan Peckhurst - Is your slightly younger brother. What can you say about brothers? You get on fine with him and pleased that he excels at football.

Thomas Riley - Is a rather mixed-up kid you often see hanging around the library, alone. You usually go out of your way to engage him in a pleasant, but brief conversation.

Rodney Frogmortson - Is a young boisterous kid who recently moved to the village, you don't know much about him at all (being a boy and 4 years younger and all). He seems to be a bit of a handful.

Imogen Frogmortson - Imogen is the younger sister of Rodney and is rather feisty for someone so small! You have, in some respects, taken her under your wing, after you saw her in the playground being picked on by some of the younger boys. Although, she probably needs little protection after slugging one of them with a good right jab. The brother and sister are apparently the offspring of rich banking parents.

THE BARROWMERE CHRONICLES

Name	IMOGEN FROGMORTSON		
Date of Birth	13/08/1993		
Sanity	5	—	—
Wounds	5	—	—
Talents	_____		



Weekly Allowance	£20.00
Inventory	_____

Athleticism	3	Awareness	4
Beauty	5	Brains	3
Computer Usage	2	Constitution	2
Conversation	3	Intuition	3
Luck	3	Lying	3
Mechanical Apt	2	Sneaking	5
Strength	3	Willpower	4

Imogen Frogmortson - Imogen is the devoted daughter of merchant banker, Richard Frogmortson. The family recently moved back to their ancestral estate in Barrowmere from the City. Imogen is 10 years old and has found the move to Barrowmere quite traumatic. She still inhabits the world of dress-up, pop stars and play, and doesn't make new friends easily. The unique feature of Barrowmere Primary School is that older kids attend there until their final O-level year (16 y.o) - meaning bullying is rife, and earlier too.

Imogen is happy to help her mother prepare elaborate meals for the numerous guests that her father brings home (work clients). Her mother (Juliette) is quite the socialite. Imogen enjoys sports like netball and soccer - the more active the better.

OTHERS

Rodney Frogmortson - Rodney is Imogen's slightly older brother. Although she loves him, she can understand how other people find him truly annoying. Imogen strongly suspects her father's idea of parenting (give him everything he wants) to be somewhat to blame for the current state of affairs. Imogen regularly takes it upon herself to put him in his place. Whack!

Stephanie Lewis - Stephanie is an older girl at school who Imogen simply adores, especially after she went out of her way to be nice to her upon her arrival; she even lets her glimpse into the sometimes confusing, adult world of 15-year-old girl talk.

Laura Peckhurst - Is a close friend of Stephanie's and is one of the few older girls who doesn't seem to resent Imogen hanging around; Laura even intervened when Imogen was being bullied by some boys in the playground.

Thomas Riley - Is a weird boy who hangs around in the library and is always staring at Imogen; it freaks her out! Still, she does miss the attention when he isn't there.

Ryan Peckhurst - Is the footballing brother of Laura who all the girls can't stop talking about; Ryan seems to be equally as nice as Laura.

THE BARROWMERE CHRONICLES

Name	RODNEY FROGMORTSON		
Date of Birth	31/03/1992		
Sanity	5	—	—
Wounds	5	—	—
Talents	_____		



Weekly Allowance	£25.00
Inventory	_____

Athleticism	2	Awareness	3
Beauty	3	Brains	3
Computer Usage	5	Constitution	2
Conversation	3	Intuition	2
Luck	2	Lying	4
Mechanical Apt	2	Sneaking	3
Strength	3	Willpower	2

Rodney Frogmortson - Rodney is the spoilt son of a merchant banker called Richard Frogmortson. The family recently moved back to their ancestral estate in Barrowmere. Rodney is a rather brash 11-year-old who is frenetic and easily bored in school. He has an unerring talent for finding trouble, or at least it finding him. He enjoys computers, fantasy films and he is constantly badgering his father to get him the latest technological wonder. Although Rodney is rather self-centered, he does have a good heart. His mother, Juliette, has a constant habit of infuriating Rodney, by making him dress up in his *sunday-best* when his father entertains his rich clients at home.

OTHERS

Imogen Frogmortson - Imogen is Rodney's slightly younger sister and the bane of his existence. She is always whining! There should be laws against such annoying sisters; it wouldn't be so bad if he was stronger than her! It's so embarrassing for Rodney to be beaten up by his own little sister.

Stephanie Lewis - Stephanie is a girl at school who Imogen endlessly raves about, but that said, your sister is an idiot.

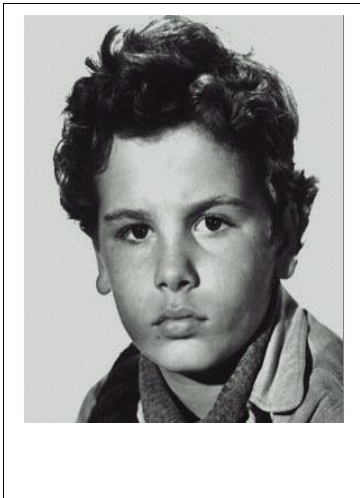
Thomas Riley - Is one of the few boys at Rodney's new school who has attempted to befriend him in the short time he has been in Barrowmere. Although Rodney finds him a little weird (what's with the bruises and zoning out mid-conversation? Doh!) It's O.K though, well at least until he makes some *real* friends.

Laura Peckhurst - Is an attractive older girl and nerd who is the School Captain, apparently. Rodney hasn't really had a lot to do with her until now.

Ryan Peckhurst - Is the *wonder-kid* striker for the school (and local youth) football team. He is the brother of Laura. Rodney finds him repellent, especially as the girls just can't stop talking about him.

THE BARRROWMERE CHRONICLES

Name	PERRY LEWIS		
Date of Birth	03/09/1989		
Sanity	5	—	—
Wounds	5	—	—
Talents	_____		



Weekly Allowance	£5.00
Inventory	_____

Athleticism	8	Awareness	5
Beauty	8	Brains	5
Computer Usage	2	Constitution	4
Conversation	5	Intuition	2
Luck	8	Lying	1
Mechanical Apt	2	Sneaking	3
Strength	4	Willpower	5

Perry Lewis - Is the son of a local meat-factory foreman named Malcolm and his mother is a housewife called Jane. His sister Stephanie has been missing for several days. Perry is out sleuthing, because he doesn't have much faith in the local police.

Perry is a serious-minded fifteen-year-old who is striving hard at his studies to hopefully, gain a scholarship to Southampton University to study forensics science. He enjoys shows like *C.S.I* and *Wire In The Blood* and can often be found reading yet another murder and crime novel in his room. It's a bitter irony that his first missing person's case is that of his own sister.

Thomas is brave but headstrong young man who will do whatever it takes to find Stephanie.

OTHERS

Stephanie Lewis - You desperately love your sister, you've hardly ever had a raised word with her despite being siblings. She is vivacious but grounded, caring young women. She is definitely not the type to go running off on a whim. Looking back at the last few days that she was around, she seemed to be in an almost serene state of being.

The Parents - It would be fair to say that your parents aren't the most loving, or nurturing couple on the planet, but they don't actively dislike each other, either. Your father, is a practical man, and your mother by comparison a fractious soul. The pair have basically stayed together out of convenience - neither really being true romantics.

Ryan Peckhurst - Is a tiresome jock who garners too much attention from the girls at school.

Laura Peckhurst - She is Ryan's slightly older sister, who you admire a lot.

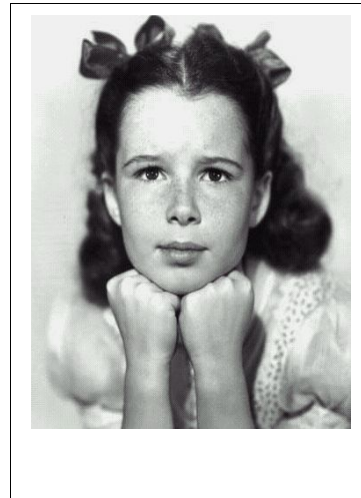
Thomas Riley - Is the odd young kid who lurks around the library. He is apparently the Blacksmith's son.

Rodney Frogmortson - Is a new young kid at school who it always seems to be causing some kind of disturbance in the schoolyard - a possible A.D.D. sufferer?

Imogen Frogmortson - Imogen is a new brattish young girl who is apparently the sister of Rodney. Typical city-types.

THE BARROWMERE CHRONICLES

Name	EMMA WARHURST
Date of Birth	23/03/1931
Sanity	5 — — — —
Wounds	5 — — — —
Talents	_____



Weekly Allowance	£0.00
Inventory	_____

Athleticism	3	Awareness	4
Beauty	5	Brains	3
Computer Usage	2	Constitution	2
Conversation	3	Intuition	3
Luck	3	Lying	3
Mechanical Apt	2	Sneaking	5
Strength	3	Willpower	4

Emma Warhurst is an orphan of war. Her father was a celebrated R.A.F (Royal Air Force) pilot named Roger. He died early in January 1941 just over Dover; he was shot down mistakenly by friendly anti-aircraft fire on a dark and stormy night. Her mother, Muriel, is said to have died of grief six-months later. In reality, she put her head in a gas oven.

Her father's risk taking pursuits weren't limited to flying, it also found ample release in bouts of excessive gambling. He managed to fritter away most of his families considerable wealth before 'buying the farm', as it were. Although he came from solid middle-class land-owning stock, his family disowned him for daring to marry a commoner, apparently well below his lofty station. The course of true love never runneth' smooth, as the classics say.

Despite the Warhurst family initially rejecting overtures to take responsibility for the destitute child, a local priest finally managed to broker a partial compromise whereby the child would be sent to a reform school in the countryside at the Warhurst clan's expense, but henceforth no further contact would be tolerated. Emma was quickly packed off to *Barrow Girl's Reform School* in Barrowmere. From Mayfair in London to the relative squalor of the countryside, it was never going to be an easy transition.

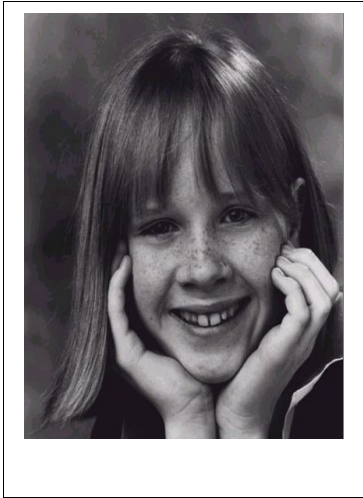
Arriving at the reformatory, she soon realized the carefree days of her childhood were all but forfeit, Prudence Rattighan, the Irish matriarch of the establishment seemed to have it in for her from the start. She was worked constantly both day and night, more so than even the other orphaned girls. The Headmistress would berate her constantly saying: "You're going to swallow that plumb before you leave here, Missy. There's no call for airs and graces in the service life". The 'service' life in question being the life of a maid or servant at a country house.

Two years on, Emma couldn't take anymore and has escaped by tricking her dear friend, Ruth Dickens (Assistant to the Headmistress) into giving her the key to the six-foot high gates that present the only form of escape from the secure school grounds. She has heard that the local Manor House also takes in evacuated children.

Emma is an affectionate and bright thirteen-year-old, who she speaks with a measured tutored accent. Despite dealing with all kinds of cruelties and deprivations in the last couple of years, she still retains her sly, but brittle sense of humor. She has learnt a measure of resilience in that time, but she would ultimately like things just to go back to *the way they were*. Still, she is alive. And 'tomorrow is another day', as Scarlett O'Hara says. Perhaps in the future, things will sort themselves out.

THE BARROWMERE CHRONICLES

Name	SARA-LEE BRAITHWAITE		
Date of Birth	21/03/2052		
Sanity	5	—	—
Wounds	5	—	—
Talents	_____		



Weekly Allowance	£10.00
Inventory	_____

Athleticism	2	Awareness	3
Beauty	3	Brains	3
Computer Usage	4	Constitution	3
Conversation	4	Intuition	2
Luck	1	Lying	2
Mechanical Apt	2	Sneaking	2
Strength	2	Willpower	1

Sara-Lee Braithwaite: Is a bubbly twelve-year-old that simply never shuts up! Everything is there just waiting to be explored and enjoyed! The only daughter of the Local Mayor and Doctor, Amanda Braithwaite, Emma simply adores her mother and she hopes some day that her mother finds true love and marries a nice rich man. Sara is a precocious young girl who simply adores teen idols, pop music and *groovetastic* clothes. She is well liked by her peers, but even the staunchest of her friends has to occasionally tell her to shut up! She doesn't mind, though.

She is currently a little frustrated that some of her younger girlfriends haven't caught up with the 'boy game-plan' yet, but more the merrier for her, she reckons. Snogging is just awesome! Despite Julian making her pay a whole dollar for the privilege. She could tell Julian wasn't into it, he was still playing on his *Nintendo Gameboy*.

Her mother is a proactive feminist. Sara-Lee dabbles in the rhetoric without fully grasping its true meaning. Emancipation meaning little more than rejecting male compliments outright. Sara is also an anarchist, vegetarian and a socialist. Her grasp of these social concepts is also a little stetchy.

OTHERS

Laura Peckhurst - Is not really a friend as it were, as she is way older, but she is someone who you admire greatly. Not only is Laura the School Captain and the resident Barrowmere brainiac, but she also has fashion sense! *Icy!*

Thomas Riley - He is always offering to help me in class, which always comes in handy when I've been jabbering merrily away to friends. He is nice enough I suppose; perhaps he knows something about *French kissing*?

Rodney Frogmortson - He's just wicked! He makes me laugh so much that my jaw hurts. Imogen is always whining about him, but he would make a fantastic brother.

Imogen Frogmortson - Imogen is such a great friend. I'm lucky to have so many great friends, but if I had to choose just one as a *keeper*, it would probably be plucky Imogen.

Ryan Peckhurst - I'm over him, honestly! He may have called me a silly little *girl* for asking him out, but girls have feelings too. That Melanie is such a heifer; she even has the *udders* to match. Three years difference is nothing these days. I'm even wearing a training bra, as of last week.