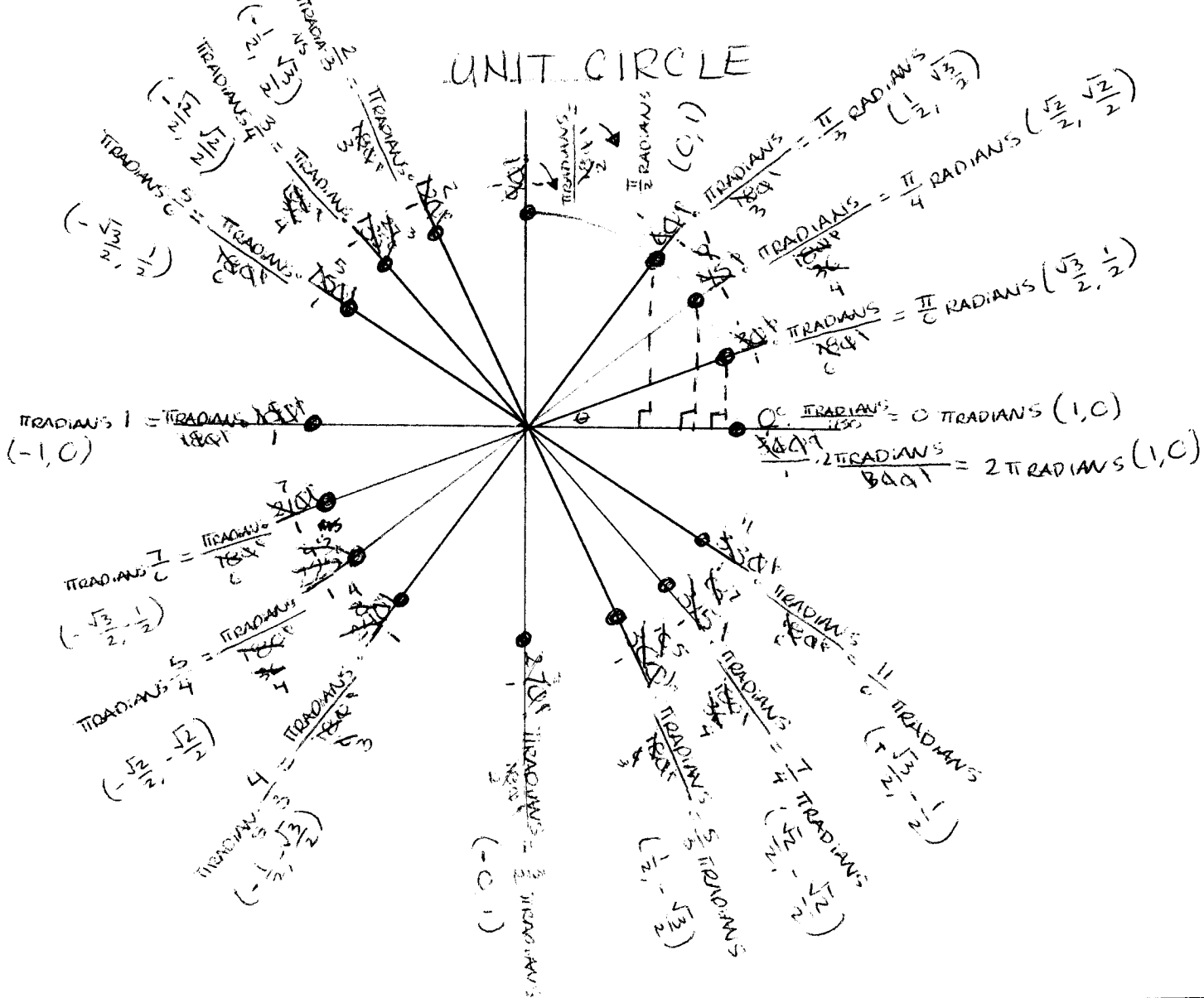
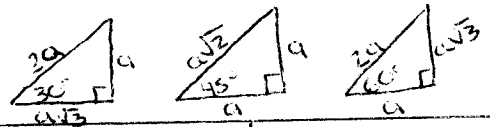


UNIT CIRCLE



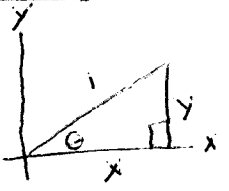
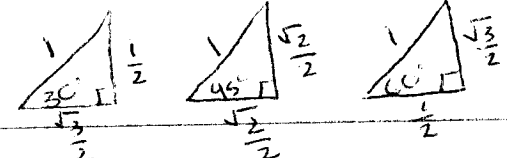
SPECIAL RIGHT Δ'S



ALGEBRA

$$\frac{2.14}{2} = \frac{1}{2} \quad \frac{\sqrt{2}}{\sqrt{2}} = \frac{1}{\sqrt{2}} \quad \frac{1.41}{\sqrt{2}} = \frac{1}{\sqrt{2}}$$

CONVERTED



$\sin \theta = y$
 $\cos \theta = x$
 $\tan \theta = \frac{y}{x}$
 $\frac{\sqrt{3}}{2} = .866$
 $\frac{\sqrt{2}}{2} = .707$

0
 .517
 1
 1.732

GRAPH

