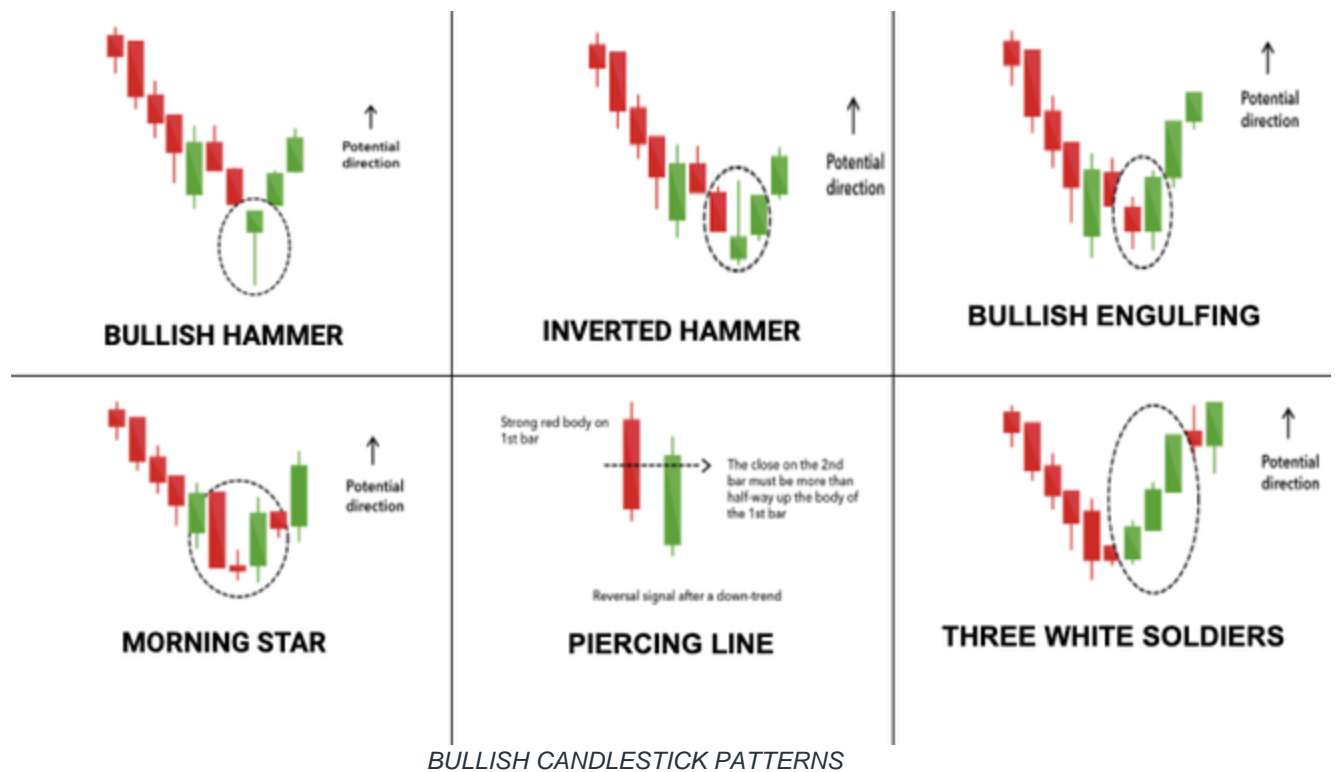


## **Bullish Candlestick Patterns:**

1. **Bullish Hammer:** This is formed when the body is short and the wick is longer. This indicates buyers are able to dominate the sellers and the price will move upwards.
2. **Inverted Hammer:** Similar to hammer but the body is inverted. This indicates that although sellers are present buyers will eventually gain control and the price will move upwards.
3. **Bullish Engulfing:** When the current day's candle engulfs (completely covers) the previous day's candle.
4. **Piercing Line:** It is also a two-stick pattern, made up of a long red candle, followed by a long green candle. A significant gap exists between the first candlestick's closing price and the green candlestick's opening. It indicates a strong buying pressure.
5. **Morning Star:** It is formed after a downward trend and it indicates the start of an upward climb. It is a sign of a reversal in the previous price trend.
6. **Three White Soldiers:** When 3 consecutive candles are green it indicates strong buying pressure and the price will continue upwards.



## Bearish Candlestick Patterns:

1. **Hanging Man:** Similar to bullish hammer but it is formed at the end of an uptrend and signals the reversal in the trend towards bearish.
2. **Shooting Star:** Similar to inverted hammer but formed at the end of an uptrend. Signals the fall of price from the top.
3. **Bearish Engulfing:** When the current day's candle engulfs (completely covers) the previous day's candle.
4. **Dark Cloud Cover:** Indicates a bearish reversal – a black cloud over the previous day's optimism. It comprises two candlesticks: a red candlestick that opens above the previous green body and closes below its midpoint.
5. **Evening Star:** It is formed after an upward trend and it indicates the start of a downward fall. It is a sign of a reversal in the previous price trend.
6. **Three Black Crows:** When 3 consecutive candles are red it indicates strong selling pressure and the price will continue downwards.



**HANGING MAN**



**BEARISH ENGULFING**



**EVENING STAR**



**THREE BLACK CROWS**



**DARK CLOUD COVER**



**SHOOTING STAR**

*BEARISH CANDLESTICK PATTERNS*