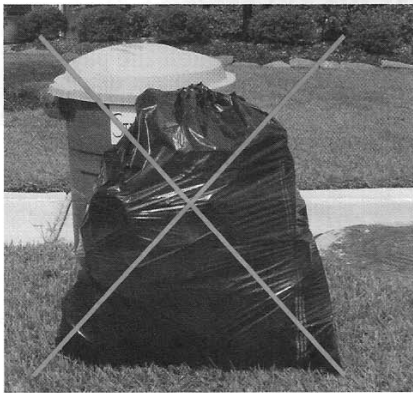


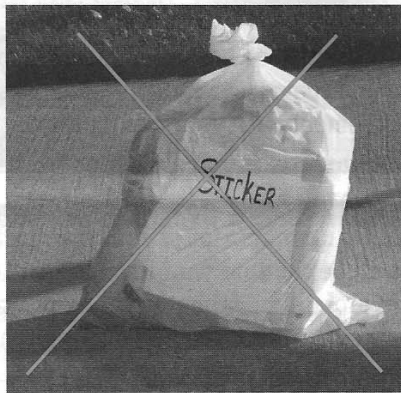
Sticker Do's and Don'ts



Sticker adhered to permanent container, facing the street, and in plain view of our driver.



Sticker obscured from view.



Place sticker on permanent container only, not on disposable items.



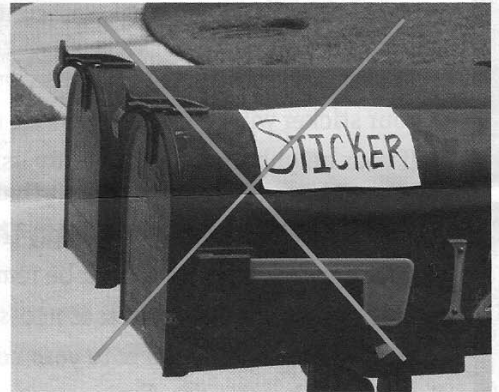
Place sticker on can, not the lid.



Place new stickers over old ones.



Place sticker high on the container (but not on lid).



Do not adhere sticker to mailboxes, posts or windows. Adhere only to permanent containers.