



Brazos Bend State Park

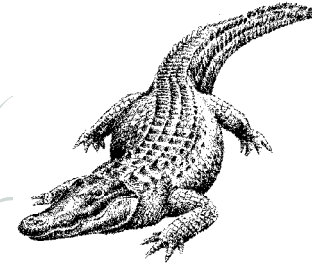
Volunteer Group:
Brazos Bend State Park Volunteer Organization — your contributions help protect and preserve this natural wonder for future generations. To find out more, ask at headquarters or call 979-553-5101.

Please Note:

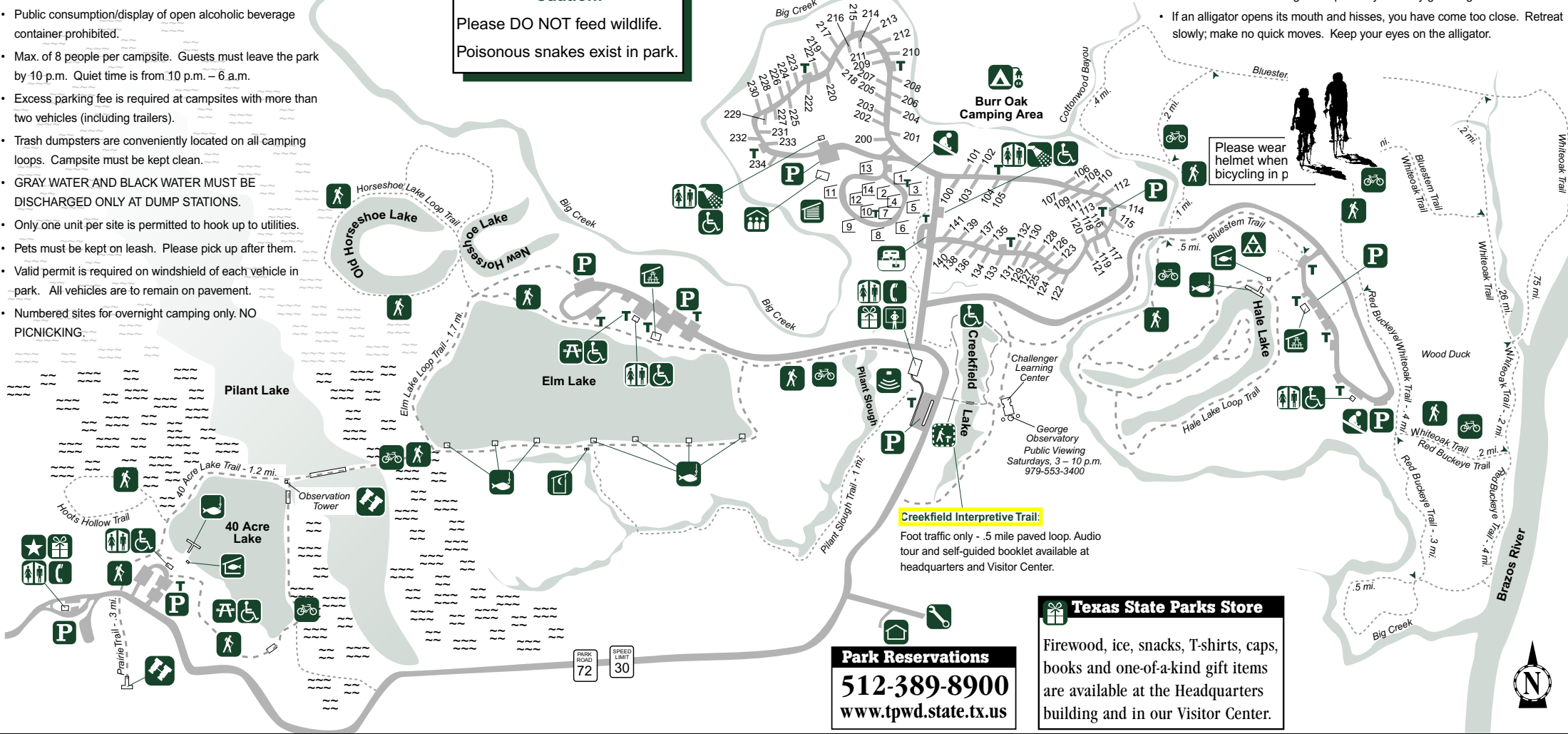
- CHECK OUT time is 2 p.m. or renew permit by 9 a.m. (pending availability).
- Public consumption/display of open alcoholic beverage container prohibited.
- Max. of 8 people per campsite. Guests must leave the park by 10 p.m. Quiet time is from 10 p.m. – 6 a.m.
- Excess parking fee is required at campsites with more than two vehicles (including trailers).
- Trash dumpsters are conveniently located on all camping loops. Campsite must be kept clean.
- GRAY WATER AND BLACK WATER MUST BE DISCHARGED ONLY AT DUMP STATIONS.
- Only one unit per site is permitted to hook up to utilities.
- Pets must be kept on leash. Please pick up after them.
- Valid permit is required on windshield of each vehicle in park. All vehicles are to remain on pavement.
- Numbered sites for overnight camping only. NO PICNICKING.

Caution:
Please DO NOT feed wildlife.
Poisonous snakes exist in park.

Alligator Etiquette:



- **ABSOLUTELY DO NOT** feed or annoy the alligators.
- Keep pets on a leash. Do not throw objects in water for your dog to retrieve.
- Keep at least 30 ft. from an alligator — do not assume they're slow-moving.
- Do not swim in or wade into any water in Brazos Bend State Park.
- If an alligator goes after a fish you have caught, cut the line and let the alligator have the fish.
- Avoid any alligator sunning itself in the middle of the trail or lake bank.
- Stay clear of grasses, twigs and/or soil near the side of a trail; it may be a nest and the mother alligator is probably close by guarding it.
- If an alligator opens its mouth and hisses, you have come too close. Retreat slowly; make no quick moves. Keep your eyes on the alligator.



Legend:

- ★ Headquarters
- 🛍️ State Parks Store
- 🚻 Rest Rooms
- 🚿 Showers
- ⚡ Sponsored Youth Camp Area
- ⚡ Water/Electric
- 🗑️ Dump Station
- 🏠 Residence
- 🎪 Screened Shelter
- 🎪 Amphitheater
- 🍽️ Dining Hall
- ♿ Handicapped Accessible
- 🚶 Interpretive Trail
- 🚴 Bike Trail
- 🚶 Hiking Trail
- ☎️ Pay Phone
- 🍃 Picnic Area
- 🏠 Group Picnic Shelter
- 🅅 Parking
- 🎣 Fishing Pier
- 🐟 Fish Cleaning
- 🎡 Playground
- 🔧 Maintenance
- 👤 Visitor Center
- 🦋 Wildlife Viewing
- 🗑️ Trash Container
- Unimproved Trail
- Paved Trail
- - - Stabilized Trail
- ~ Marsh

Park Reservations
512-389-8900
www.tpwd.state.tx.us

Texas State Parks Store
Firewood, ice, snacks, T-shirts, caps, books and one-of-a-kind gift items are available at the Headquarters building and in our Visitor Center.

21901 FM 762
Needville, Texas 77461
979-553-5101