



WHITE MOTORS

Motor Repair Parts

RS Series

- Motor Breakdown520
- Motor Components521

RE Series

- Motor Breakdown522
- Motor Components523
- 72 mm Bearing Motor Breakdown524
- 72 mm Bearing Motor Components525
- 1.5" Bearing Motor Breakdown526
- 1.5" Bearing Motor Components527
- 1.5" Bearing Wheel Motor Breakdown528
- 1.5" Bearing Wheel Motor Components529
- 1.5" Bearing SAE "A" Style Flange Motor Breakdown530
- 1.5" Bearing SAE "A" Style Flange Motor Components531
- 125 mm Bearing Motor Breakdown532
- 125 mm Bearing Motor Components533
- 12 Housing Brake Motor Breakdown534
- 12 Housing Brake Motor Components535

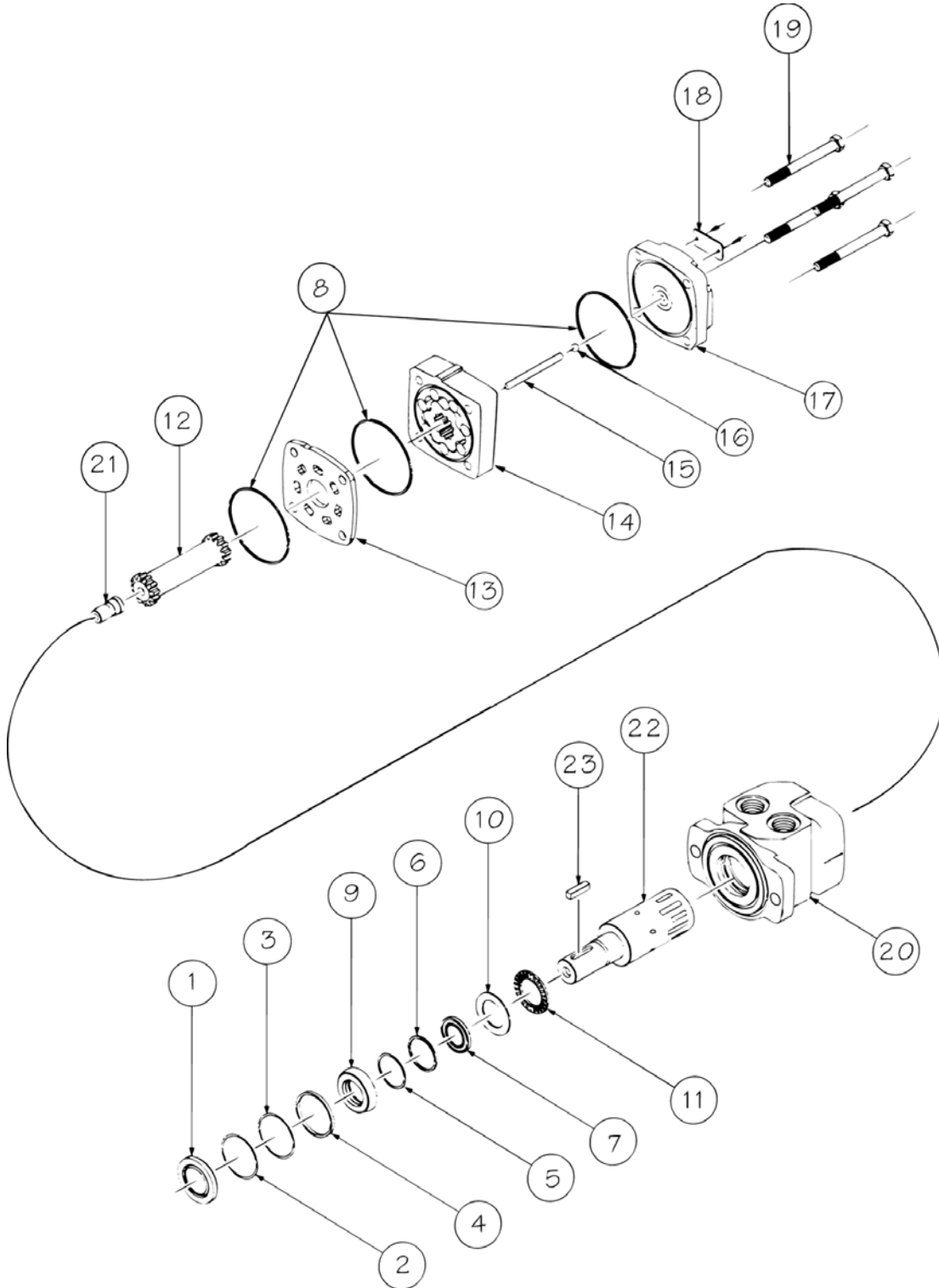
DR Series

- Motor Breakdown536
- Motor Components537

DT Series

- Setback Brake Motor Breakdown538
- Setback Brake Motor Components539
- 125 mm Bearing Motor Breakdown540
- 125 mm Bearing Motor Components541

STANDARD RS SERIES MOTOR



STANDARD RS SERIES MOTOR COMPONENTS

STANDARD SEAL KITS

Kit #	DESCRIPTION	EXPLODED VIEW ITEM #
Kit # PS222001 Includes Items 1 - 10	DUST SEAL	1
	SPLIT WIRE RING	2
	METAL BACKUP SHIM	3
	HIGH PRESSURE SEAL	4
	METAL BACKUP SHIM	5
	TEFLON BACKUP SHIM	6
Kit # PS222002 Includes Items 1 - 8	SHAFT SEAL	7
	BODY SEALS (3)	8
	SEAL CARRIER	9
Kit # PS222003 Includes Items 9 - 10	THRUST WASHER	10

MISCELLANEOUS KITS

DESCRIPTION	EXPLODED VIEW ITEM #	KIT #
DUST SEAL	1	PS018013
BODY SEAL	8	PS018013
THRUST BEARING	11	PS018011
COOLING PLUG	21	PH018999
WEAR PLATE	13	PS012000
MID MOUNT WEAR PLT.	13	PS012001
ENDCOVER	17	PS016003
1000 PSI RELIEF VALVE	NOT SHOWN	PE018228
2000 PSI RELIEF VALVE	NOT SHOWN	PE018231
3000 PSI RELIEF VALVE	NOT SHOWN	PE018221
3/4-28 SLOTTED NUT	NOT SHOWN	PS229300
3/4-28 SOLID NUT	NOT SHOWN	PS018039
3/4-28 PACK NUT	NOT SHOWN	PS018077
4-PIN SPEED SENSOR	NOT SHOWN	PE018219
MANIFOLD SEAL	NOT SHOWN	PS018022

ROTORS, DRIVE LINKS AND SPACERS, AND BOLTS

WHEN CHANGING MOTOR DISPLACEMENTS, A MATCHING DRIVE LINK, DRIVE LINK PIN KIT AND BOLT SET KIT MUST ALSO BE ORDERED

EXPLODED VIEW ITEM #	14	14	12	15	19
DISPLACEMENT	STD ROTOR KIT	FREETURN ROTOR KIT	DRIVE LINK KIT	DRIVE LINK PIN KIT	BOLT SET KIT
03	PS037003	PS037004	PS014002	PS224003	PS225003
04	PS047004	PS047005	PS014002	PS224008	PS225005
05	PS067010	PS067012	PS014001	PS224005	PS225005
06	PS087003	PS087004	PS014001	PS224006	PS225005
08	PS097003	PS097004	PS014001	PS224008	PS225010
10	PS107009	PS107010	PS014003	PS224010	PS225010
12	PS127009	PS127011	PS014003	PS224012	PS225012
14	PS147005	PS147006	PS014003	PS224014	PS225014
18	PS187009	PS187011	PS014003	PS224018	PS225018
24	PS247009	PS247011	PS014003	PS224024	PS225024

HOUSING KITS

EXPLODED VIEW ITEM #20

Because the housing and shaft are match ground as a set to extremely tight tolerances at the factory, White Hydraulics does not recommend that individual housings or shafts be ordered to repair a motor. It is recommended that a matched set be ordered. To order a matched housing/shaft kit, see the housing/shaft listing below right.

DESCRIPTION	HOUSING KIT	DESCRIPTION	HOUSING KIT
#01 4-HOLE W/ 1/2" NPT	PS013401	#18 4-HOLE REAR MOUNT W/ 9/16 O-RING	PS013302
#02 4-HOLE W/ 7/8" O-RING	PS013301	#20 2-HOLE ALIGNED W/ 1/2" BSP.F	PS013604
#03 2-HOLE W/ 1/2" NPT	PS013201	#21 4-HOLE METRIC MOUNT W/ 1/2" BSP.F	PS013403
#04 2-HOLE W/ 7/8" O-RING	PS013101	#25 4-HOLE METRIC MNT. W/ MANIFOLD PORTS	PS013504
#05 4-HOLE W/ MANIFOLD PORTS	PS013501	#26 2-HOLE METRIC MNT. W/ MANIFOLD PORTS	PS013702
#06 2-HOLE W/ MANIFOLD PORTS	PS013700	#27 2-HOLE W/OFFSET BSP.F AND .200 PILOT	PS013606
#07 2-HOLE W/ OFFSET 1/2" BSP.F	PS013601	#29 2-HOLE W/OFFSET MNFLD. AND .200 PILOT	PS013605
#09 2-HOLE W/ OFFSET MNFLD. W/ 1/2" BSP.F	PS013600	#30 2-HOLE W/OFFSET 7/8" O-RING & RLF. PORT	PS013105
#10 2-HOLE W/ALIGNED 1/2" BSP.F	PS013602	#32 4-HOLE W/OFFSET 7/8" O-RING & RLF. PORT	PS013304
#11 6-HOLE W/ 7/8" O-RING	PS013103	#34 2-HOLE W/ 7/8" O-RING	PS013104
#12 4-HOLE W/ MILLED MANIFOLD	PS013502	#37 2-HOLE W/ 1/2" BSP.F W/ RLF PRT & .200 PLT.	PS013608
#13 2-HOLE W/ MILLED MANIFOLD	PS013701	#40 2-HOLE W/ALIGNED 1/2" BSP.F & .200 PILOT	PS013607
#14 6-HOLE W/ 1/2" NPT	PS013202	#46 2-HOLE W/METRIC MNFLD. MNT. & .200 PILOT	PS013703
#17 2-HOLE MLD. & SPTFCD. W/OFS. 1/2" BSP.F	PS013603		

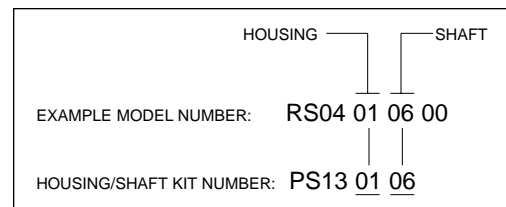
SHAFTS AND RELATED COMPONENTS KITS

Shaft kits come with related shaft components (i.e., keys, nuts, etc.) to order individual keys, use the key kit number. To order nut kits (for #09 shaft), see miscellaneous kits list above.

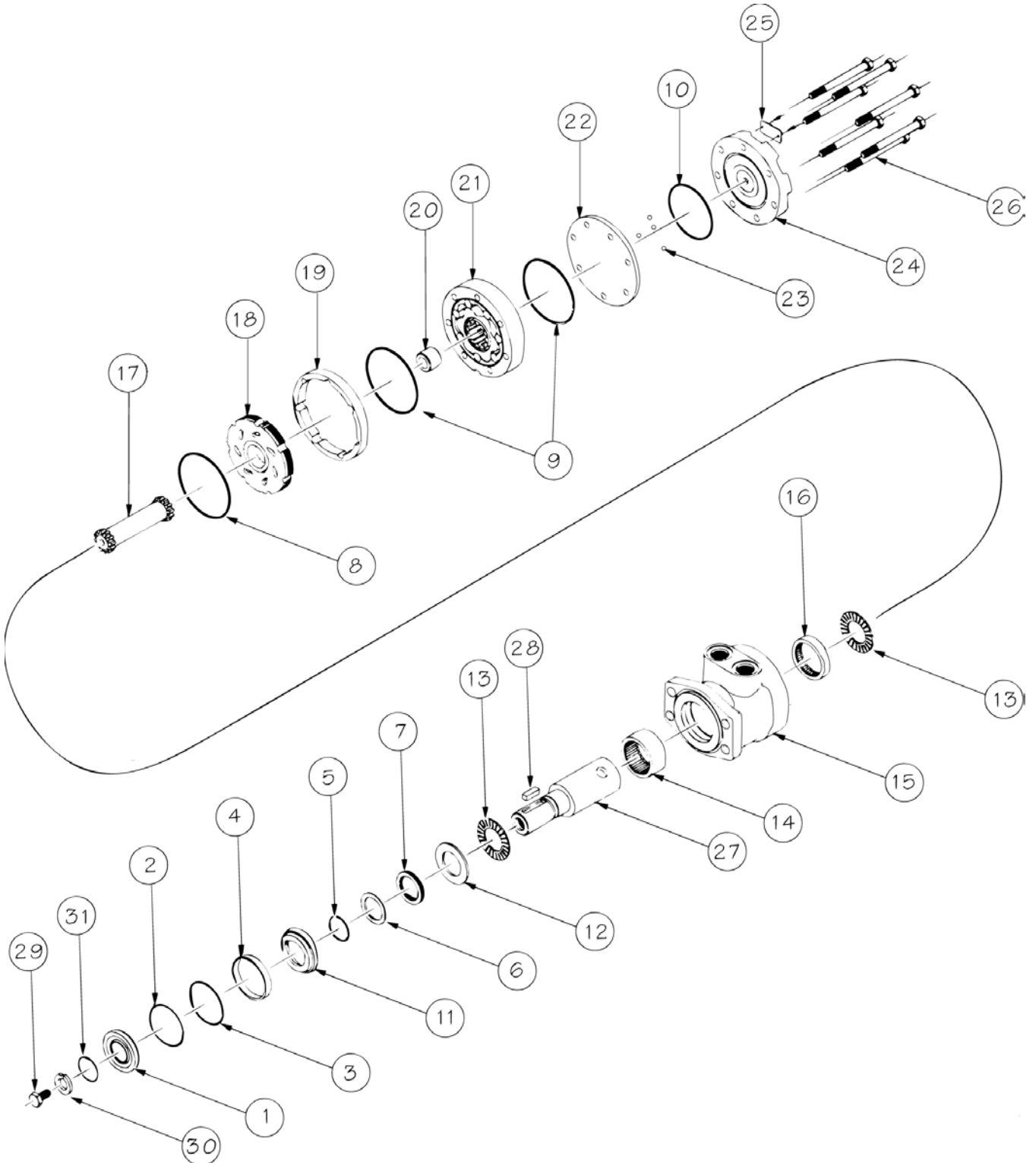
EXPLODED VIEW ITEM #	22	23
DESCRIPTION	SHAFT KIT	KEY KIT
#00 1" PINHOLE	PS011000	—
#01 1" STRAIGHT	PS011100	PS229100
#06 6B SPLINE	PS011600	—
#07 13 TOOTH SPLINE	PS011700	—
#08 25mm STRAIGHT (8mm KEY)	PS011101	PS229101
#09 1" TAPERED (W/PACKNUT)	PS011103	PS229102
#10 25mm STRAIGHT (8mm KEY)	PS011105	PS229101
#12 25mm STRAIGHT (7mm KEY)	PS011104	PS229103
#16 6B EXTENDED NOSE	PS011602	—
#20 1" W/ .406 PINHOLE	PS011101	—
#21 1" STRAIGHT SPEED SENSOR	PS011106	PS229100
#28 25mm STRAIGHT SPEED SENSOR	PS011107	PS229101
#29 1" TAPERED SPEED SENSOR	PS011109	PS229102
#A1 1" STRAIGHT W/METRIC THRD.	PS011108	PS229100
#A6 6B SPLINE W/METRIC THRD.	PS011603	—

HOUSING/SHAFT KITS

Housing/Shaft kits come with items 20, 21, 22 & 23. To order a matched Housing/Shaft kit, specify the kit number by "PS13" followed by the two-digit shaft number. See the example below.



STANDARD RE SERIES MOTOR



STANDARD RE SERIES MOTOR COMPONENTS

STANDARD SEAL KITS

Kit # PE444001

Includes Items 1 - 12

Kit # PE444002

Includes Items 1 - 10

Kit # PE444003

Includes Items 11 - 12

DESCRIPTION	EXPLODED VIEW ITEM #
DUST SEAL	1
SPLIT WIRE RING	2
METAL BACKUP SHIM	3
HIGH PRESSURE SEAL	4
METAL BACKUP SHIM	5
TEFLON BACKUP SHIM	6
SHAFT SEAL	7
REAR HOUSING SEAL	8
BODY SEALS (2)	9
ENDCOVER SEAL	10
SEAL CARRIER	11
THRUST WASHER	12

MISCELLANEOUS KITS

DESCRIPTION	EXPLODED VIEW ITEM #	KIT #
THRUST BEARING	13	PE018059
FRNT HSNG BRNG (1" WIDE)	14	PE018003
REAR HSNG BRNG (.5" WIDE)	16	PE018002
FORWARD MANIFOLD (CW)	18	PE015006
REVERSE MANIFOLD (CCW)	18	PE015007
MANIFOLD BOOT	19	PE018041
BLNCE PLATE (4 BALLS INCLD)	22	PE012001
STEEL BALL	23	PE018048
ENDCOVER	24	PE016001
DUST SEAL ONLY	1	PE018006
1000 PSI RELIEF VALVE	NOT SHOWN	PE018228
2000 PSI RELIEF VALVE	NOT SHOWN	PE018231
3000 PSI RELIEF VALVE	NOT SHOWN	PE018221
1.00-20 UNEF SLOTTED NUT	NOT SHOWN	PE449304
1.00-20 UNEF SOLID NUT	NOT SHOWN	PE449303
1.00-20 UNEF PACK NUT	NOT SHOWN	PB339303P
1.00-20 UNEF POLY LCKNT	NOT SHOWN	PE449305

ROTORS, DRIVE LINKS AND SPACERS, AND BOLTS

When changing motor displacements, a matching rotor and bolt set kit must be ordered. A new drive link kit may be necessary. Drive link spacers are included in drive link kits.

EXPLODED VIEW ITEM #	21	21	17	20	26
DISPLACEMENT	STD ROTOR KIT	FREETURN ROTOR KIT	DRIVE LINK KIT	DRIVE LINK SPGR. KIT	BOLT SET KIT
07	PE087005	PE087008	PE014009	—	PE445006
10	PE137005	PE137011	PE014009	—	PE445006
12	PE167004	PE167011	PE014009	PE018075	PE445012
14	PE147002	PE147004	PE014009	PE018185	PE445014
16	PE227000	PE227004	PE014009	PE018076	PE445014
18	PE247005	PE247011	PE014007	—	PE445018
20	PE207000	PE207004	PE014008	PE018076	PE445026
24	PE307005	PE307011	PE014008	—	PE445024
26	PE357003	PE357005	PE014008	PE018076	PE445026
32	PE407005	PE407011	PE014008	PE018077	PE445032
45	PE607005	PE607011	PE014008	PE018078	PE445045

HOUSING KITS

EXPLODED VIEW ITEM #15

Standard housing kits include the front bearing (#14) and the rear bearing (#16) installed in the housing.

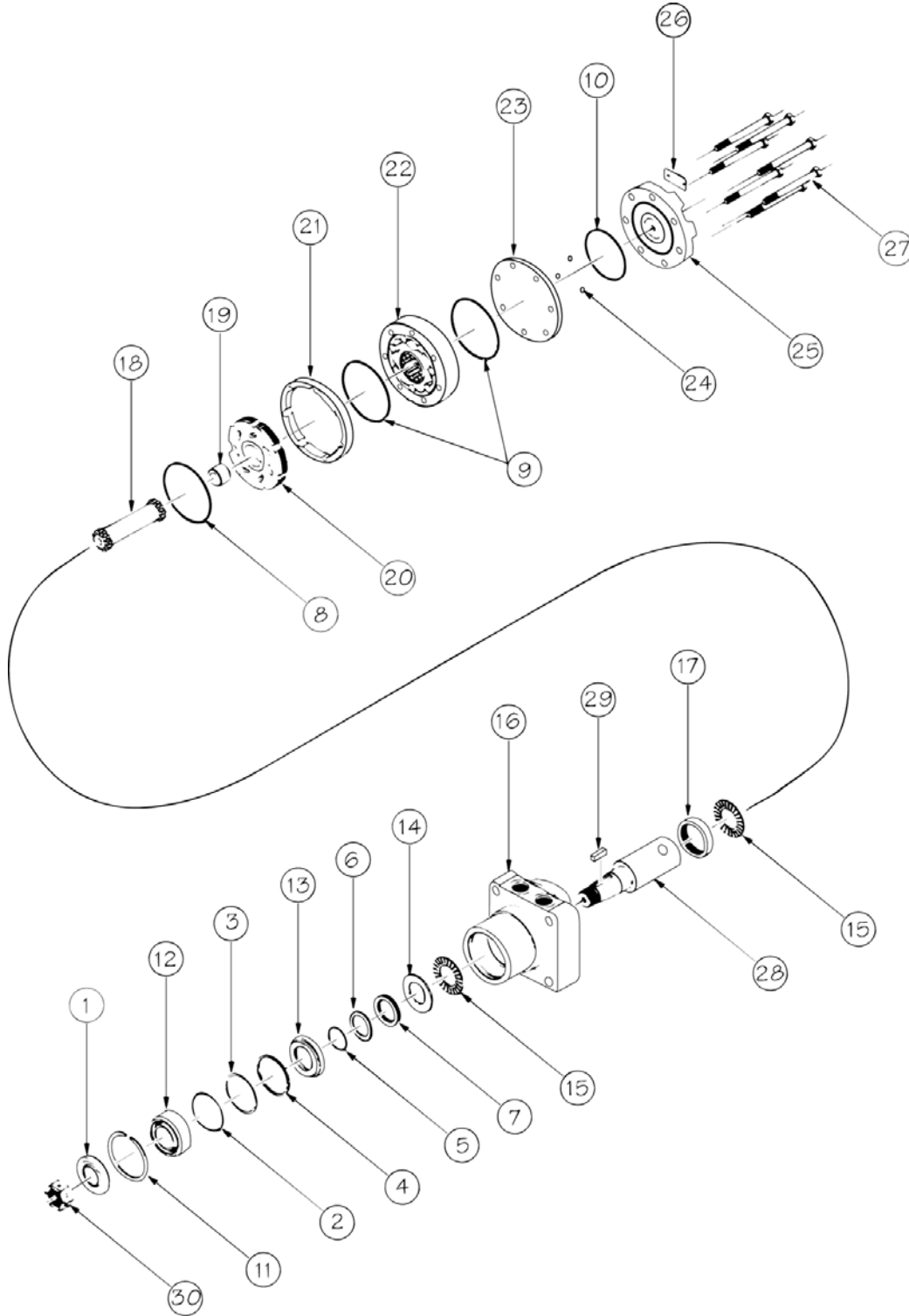
DESCRIPTION	HOUSING KIT	DESCRIPTION	HOUSING KIT
#02 4-HOLE W/O PILOT & RS 4-HOLE BLT PTRN.	PE130223	#18 6-HOLE SAE "A" STYLE W/ 7/8" O-RING	PE131823
#05 SETBACK W/ 1/2" BSP.F	PE130523	#19 6-HOLE SAE "A" STYLE W/ 1/2" BSP.F	PE131923
#06 4-HOLE SAE "A" STYLE W/ 1/2" BSP.F	PE130623	#35 SETBACK W/RELIEF PRT W/ 1/2" BSP.F	PE133523
#07 SETBACK W/ 7/8" O-RING	PE130723	#36 4-HOLE SAE "A" W/RLF. PRT & 1/2" BSP.F	PE133623
#08 4-HOLE SAE "A" STYLE W/ 7/8" O-RING	PE130823	#37 SETBACK W/RLF. PORT & 7/8" O-RING	PE133723
#11 SETBACK W/ BRAKE MOUNT W/ 7/8" O-RING	PE131123	#38 4-HOLE SAE "A" W/RLF. PRT & 7/8" O-RING	PE133823
#16 2-HOLE SAE "A" STYLE W/ 7/8" O-RING	PE131623	#48 6-HOLE SAE "A" W/RLF. PRT & 7/8" O-RING	PE134823
#17 2-HOLE SAE "A" STYLE W/ 1/2" BSP.F	PE131723	#49 6-HOLE SAE "A" W/RLF. PRT & 1/2" BSP.F	PE134923

SHAFTS AND RELATED COMPONENTS KITS

Shaft kits come with related shaft components (i.e., keys, nuts, etc.) to order individual shaft components (i.e. keys, nuts, bolts, washers or wire rings) use the kit number for each individual part. For nut kit, see miscellaneous kit list above.

EXPLODED VIEW ITEM #	27	28	29	30	31
DESCRIPTION	SHAFT KIT	KEY KIT	BOLT KIT	WASHER KIT	WIRE RING KIT
#02 6B SPLINE	PE011600	—	—	—	—
#03 1-1/4" TAPERED	PE011300	PE449101	—	—	—
#04 1-1/4" STRAIGHT	PE011200	PE449102	PE449301	PE449302	PE449201
#05 14 TOOTH SPLINE	PE011101	—	—	—	PE449201
#06 1" STRAIGHT	PE011201	PE449100	—	—	—
#07 25mm STRAIGHT	PE011109	PE449104	—	—	—
#08 19 TOOTH SPLINE	PE011102	—	—	—	PE449201
#09 32mm STRAIGHT	PE011203	PE449103	—	—	PE449201
#11 15 TOOTH SPLINE	PE011103	—	—	—	—
#13 1" STRAIGHT EXTENDED	PE011202	PE449100	—	—	—
#18 12 TOOTH SPLINE	PE011108	—	—	—	—
#32 13 TOOTH SPLINE	PE011114	—	—	—	—
#34 12 TOOTH SPLINE (BK)	PE011116	—	—	—	—

RE 72 mm BEARING MOTOR



RE 72mm BEARING MOTOR COMPONENTS

STANDARD SEAL KITS

Kit # PE444001

Includes Items 1 - 12

Kit # PE444002

Includes Items 1 - 10

Kit # PE444003

Includes Items 11 - 12

DESCRIPTION	EXPLODED VIEW ITEM #
DUST SEAL	1
SPLIT WIRE RING	2
METAL BACKUP SHIM	3
HIGH PRESSURE SEAL	4
METAL BACKUP SHIM	5
TEFLON BACKUP SHIM	6
SHAFT SEAL	7
REAR HOUSING SEAL	8
BODY SEALS (2)	9
ENDCOVER SEAL	10
SEAL CARRIER	11
THRUST WASHER	12

MISCELLANEOUS KITS

DESCRIPTION	EXPLODED VIEW ITEM #	KIT #
RETAINING SNAP RING	11	PE018141
72mm BEARING	12	PE018098
THRUST BEARING	15	PE018059
REAR HOUSING BEARING	17	PE018002
FORWARD MANIFOLD (CCW)	20	PE015006
REVERSE MANIFOLD (CW)	20	PE015007
MANIFOLD BOOT	21	PE018041
BALANCE PLATE (4 BALLS)	23	PE012001
STEEL BALL	24	PE018048
ENDCOVER	25	PE016001
DUST SEAL ONLY	1	PE018006
1000 PSI RELIEF VALVE	NOT SHOWN	PE018228
2000 PSI RELIEF VALVE	NOT SHOWN	PE018231
3000 PSI RELIEF VALVE	NOT SHOWN	PE018221
1.00-20 UNEF SLOTTED NUT	30	PE449304
1.00-20 UNEF SOLID NUT	30	PE449303
1.00-20 UNEF PACK NUT	30	PB339303P
1.00-20 UNEF POLY LCKNT	30	PE449305
SAE "C" MOUNT FLANGE	NOT SHOWN	PT013003

ROTORS, DRIVE LINKS AND SPACERS, AND BOLTS

When changing motor displacements, a matching rotor and bolt set kit must be ordered. A new drive link kit may be necessary. Drive link spacers are included in drive link kits but may also be ordered separately by using the drive link spacer kit number.

EXPLODED VIEW ITEM #	22	22	18	19	27
DISPLACEMENT	STD ROTOR KIT	FREETURN ROTOR KIT	DRIVE LINK KIT	DRIVE LINK SPGR. KIT	BOLT SET KIT
07	PE087005	PE087008	PE014009	—	PE445006
10	PE137005	PE137011	PE014009	—	PE445006
12	PE167004	PE167011	PE014009	PE018075	PE445012
14	PE147002	PE147004	PE014009	PE018185	PE445014
16	PE227000	PE227004	PE014009	PE018076	PE445014
18	PE247005	PE247011	PE014007	—	PE445018
20	PE207000	PE207004	PE014008	PE018076	PE445026
24	PE307005	PE307011	PE014008	—	PE445024
26	PE357003	PE357005	PE014008	PE018076	PE445026
32	PE407005	PE407011	PE014008	PE018077	PE445032
45	PE607005	PE607011	PE014008	PE018078	PE445045

HOUSING KITS

EXPLODED VIEW ITEM #16

Standard housing kits include the bearings (#12 & #17), dust seal (#1) and retaining snap ring (#11) installed in the housing.

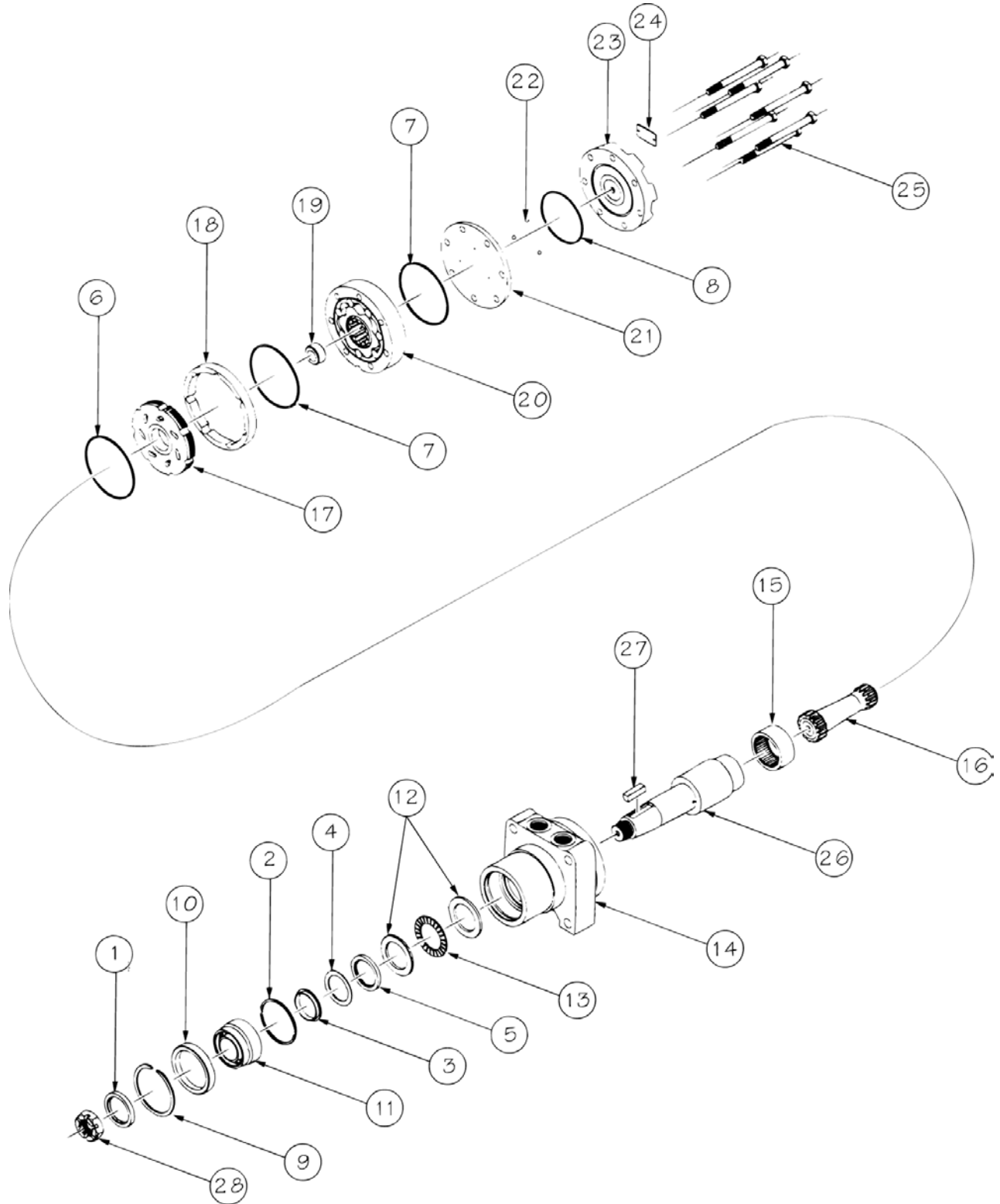
DESCRIPTION	HOUSING KIT
#09 SETBACK W/ 7/8" O-RING	PE130928
#14 SETBACK W/ 1/2" BSP.F	PE131428
#15 SETBACK W/TURNED PILOT W/ 7/8" O-RING	PE131528
#22 SETBACK W/"C" FRONT MNT. W/ 7/8" O-RING	PE132228
#24 SETBACK W/"C" FRONT MNT. W/ 1/2" BSP.F	PE132428
#39 SETBACK W/RELIEF PORT W/ 7/8" O-RING	PE133928
#44 SETBACK W/RELIEF PORT W/ 1/2" BSP.F	PE134428

SHAFTS AND RELATED COMPONENTS KITS

Shaft kits come with related shaft components (i.e.. keys, nuts, etc.) to order individual shaft components (i.e. keys, nuts, bolts, washers or wire rings) use the kit number for each individual part. For nut kit, see miscellaneous kit list above.

EXPLODED VIEW ITEM #	28	29	NOT SHOWN	NOT SHOWN	NOT SHOWN
DESCRIPTION	SHAFT KIT	KEY KIT	BOLT KIT	WASHER KIT	WIRE RING KIT
#10 1-1/4" TAPERED	PE011302	PE449101	—	—	—
#14 1-1/4" STRAIGHT	PE011204	PT669100	PE449301	PE449302	PE449201
#15 19 TOOTH SPLINE	PE011105	—	—	—	PE449201
#16 14 TOOTH SPLINE	PE011107	—	—	—	PE449201
#17 32mm STRAIGHT	PE011205	PE449103	—	—	PE449201
#19 6B SPLINE	PE011602	—	—	—	—
#20 13 TOOTH SPLINE	PE011110	—	—	—	—
#21 1" STRAIGHT	PE011206	PE449100	—	—	—

RE 1.5" BEARING MOTOR



RE 1.5" BEARING MOTOR COMPONENTS

STANDARD SEAL KITS

Kit # PT666000
Includes Items 1 - 8

DESCRIPTION	EXPLODED VIEW ITEM #
DUST SEAL	1
HIGH PRESSURE SEAL	2
METAL BACKUP SHIM	3
TEFLON BACKUP SEAL	4
SHAFT SEAL	5
REAR HOUSING SEAL	6
BODY SEALS (2)	7
ENDCOVER SEAL	8

MISCELLANEOUS KITS

DESCRIPTION	EXPLODED VIEW ITEM #	KIT #
RETAINING SNAP RING	9	PT018013
BEARING SPACER	10	PT018085
1.5" BEARING	11	PB018021
THRUST WASHER	12	PT018041
THRUST BEARING	13	PT018033
REAR HOUSING BEARING	15	PT018012
FORWARD MANIFOLD (CCW)	17	PE015006
REVERSE MANIFOLD (CW)	17	PE015007
MANIFOLD BOOT	18	PE018041
BALANCE PLATE (4 BALLS)	21 & 22	PE012001
STEEL BALL	22	PE018048
ENDCOVER	23	PE016001
1000 PSI RELIEF VALVE	NOT SHOWN	PE018228
2000 PSI RELIEF VALVE	NOT SHOWN	PE018231
3000 PSI RELIEF VALVE	NOT SHOWN	PE018221
1.125-18 UNEF SLOTTED HEX NUT	28	PT018038
1.125-18 UNEF SOLID HEX NUT	28	PT018054
SAE "C" MOUNT FLANGE	NOT SHOWN	PT013003
DUST SEAL ONLY	1	PB18006

ROTORS, DRIVE LINKS AND SPACERS, AND BOLTS

When changing motor displacements, a matching rotor and bolt set kit must be ordered. A new drive link kit may be necessary. Drive link spacers are included in drive link kits but may also be ordered separately by using the drive link spacer kit number.

EXPLODED VIEW ITEM #	20	20	16	16	19	25
DISPLACEMENT	STANDARD ROTOR KIT	FREETURN ROTOR KIT	DRIVE LINK KIT (for all shafts except #30 shaft)	DRIVE LINK KIT (for #30 shaft only)	DRIVE LINK SPACER KIT	BOLT SET KIT
07	PE087005	PE087008	PE014009	PE014030	—	PE445006
10	PE137005	PE137011	PE014009	PE014030	—	PE445006
12	PE167004	PE167011	PE014009	PE014014	PE018075	PE445012
14	PE147002	PE147004	PE014009	PE014014	PE018185	PE445014
16	PE227000	PE227004	PE014009	PE014014	PE018076	PE445014
18	PE247005	PE247011	PE014007	PE014015	—	PE445018
20	PE207000	PE207004	PE014008	PE014016	PE018076	PE445026
24	PE307005	PE307011	PE014008	PE014016	—	PE445024
26	PE357003	PE357005	PE014008	PE014016	PE018076	PE445026
32	PE407005	PE407011	PE014008	PE014016	PE018077	PE445032
45	PE607005	PE607011	PE014008	PE014016	PE018078	PE445045

HOUSING KITS

EXPLODED VIEW ITEM #14

Standard housing kits include rear bearing (#15) installed in the housing.

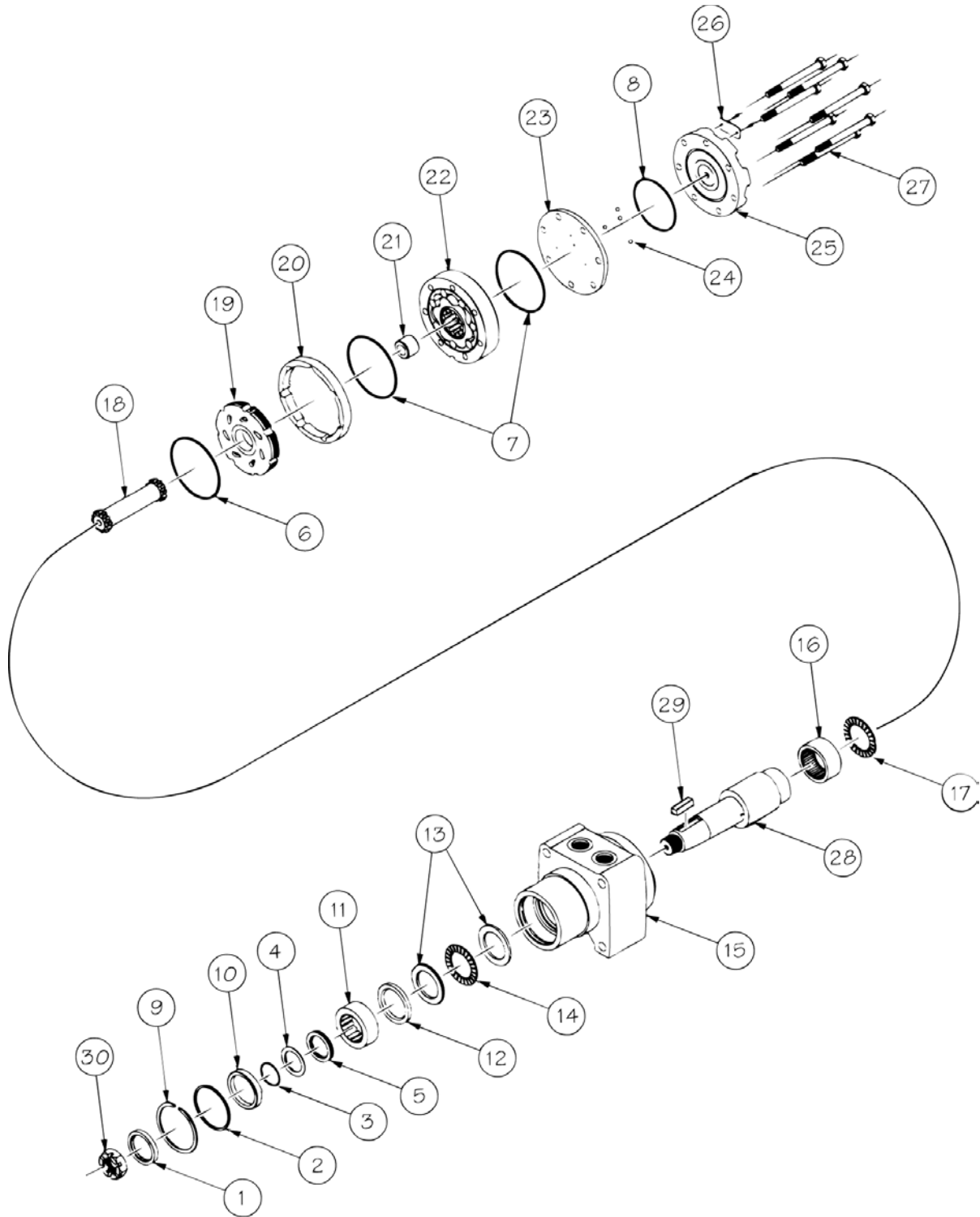
DESCRIPTION	HOUSING KIT
#20 SETBACK W/ 7/8" O-RING	PE132028
#21 SETBACK W/ 1/2" BSP.F	PE132028
#23 SETBACK W/ SAE "C" FRONT MOUNT W/ 7/8" O-RING	PE132328
#25 SETBACK W/ SAE "C" FRONT MOUNT W/ 1/2" BSP.F	PE132528
#50 SETBACK W/ RELIEF PORT AND 7/8" O-RING	PE135028
#53 SETBACK W/ SAE "C" FRONT MOUNT W/RELIEF PORT & 7/8" O-RING	PE135328

SHAFTS AND RELATED COMPONENTS KITS

Shaft kits come with related shaft components (i.e., keys, nuts, etc.) to order individual shaft components (i.e., keys, nuts, bolts, washers or wire rings) use the kit number for each individual part. For nut kit, see miscellaneous kit list above.

EXPLODED VIEW ITEM #	26	27
DESCRIPTION	SHAFT KIT	KEY KIT
#30 1-1/2" STRAIGHT	PT011200	PB339105
#31 1-1/2" TAPERED	PE011305	PE449105
#33 1-1/4" TAPERED	PE011309	PE449101
#42 1-3/8" 6B SPLINE PTO	PE011605	—

RE 1.5" BEARING WHEEL MOTOR



RE 1.5" BEARING WHEEL MOTOR COMPONENTS

STANDARD SEAL KITS

Kit # PT666000
Includes Items 1 - 8

DESCRIPTION	EXPLODED VIEW ITEM #
DUST SEAL	1
HIGH PRESSURE SEAL	2
METAL BACKUP SHIM	3
TEFLON BACKUP SEAL	4
SHAFT SEAL	5
REAR HOUSING SEAL	6
BODY SEALS (2)	7
ENDCOVER SEAL	8

MISCELLANEOUS KITS

DESCRIPTION	EXPLODED VIEW ITEM #	KIT #
RETAINING SNAP RING	9	PE018249
SEAL CARRIER	10	PE018238
1.5" BEARING	11	PE018242
BEARING SPACER	12	PE018248
THRUST WASHER	13	PT018041
FRONT THRUST BEARING	14	PT018033
REAR HOUSING BEARING	16	PT018012
REAR THRUST BEARING	17	PE018059
FORWARD MANIFOLD (CCW)	19	PE015006
REVERSE MANIFOLD (CW)	19	PE015007
MANIFOLD BOOT	20	PE018041
BALANCE PLATE (4 BALLS)	23 & 24	PE012001
STEEL BALL	24	PE018048
ENDCOVER	25	PE016001
1000 PSI RELIEF VALVE	NOT SHOWN	PE018228
2000 PSI RELIEF VALVE	NOT SHOWN	PE018231
3000 PSI RELIEF VALVE	NOT SHOWN	PE018221
1.125-18 UNEF SLOTTED HEX NUT	28	PT018038
1.125-18 UNEF SOLID HEX NUT	28	PT018054
SAE "C" MOUNT FLANGE	NOT SHOWN	PT013003

ROTORS, DRIVE LINKS AND SPACERS, AND BOLTS

When changing motor displacements, a matching rotor and bolt set kit may be ordered. A new drive link kit may be necessary. Drive link spacers are included in drive link kits but may also be ordered separately by using the drive link spacer kit number.

EXPLODED VIEW ITEM #	22	22	18	18	21	27
DISPLACEMENT	STANDARD ROTOR KIT	FREETURN ROTOR KIT	DRIVE LINK KIT (for all shafts except #30 shaft)	DRIVE LINK KIT (for #30 shaft only)	DRIVE LINK SPACER KIT	BOLT SET KIT
07	PE087005	PE087008	PE014009	PE014030	—	PE445006
10	PE137005	PE137011	PE014009	PE014030	—	PE445006
12	PE167004	PE167011	PE014009	PE014014	PE018075	PE445012
14	PE147002	PE147004	PE014009	PE014014	PE018185	PE445014
16	PE227000	PE227004	PE014009	PE014014	PE018076	PE445014
18	PE247005	PE247011	PE014007	PE014015	—	PE445018
20	PE207000	PE207004	PE014008	PE014016	PE018076	PE445026
24	PE307005	PE307011	PE014008	PE014016	—	PE445024
26	PE357003	PE357005	PE014008	PE014016	PE018076	PE445026
32	PE407005	PE407011	PE014008	PE014016	PE018077	PE445032
45	PE607005	PE607011	PE014008	PE014016	PE018078	PE445045

HOUSING KITS

EXPLODED VIEW ITEM #15

Standard housing kits include rear bearing (#17) installed in the housing.

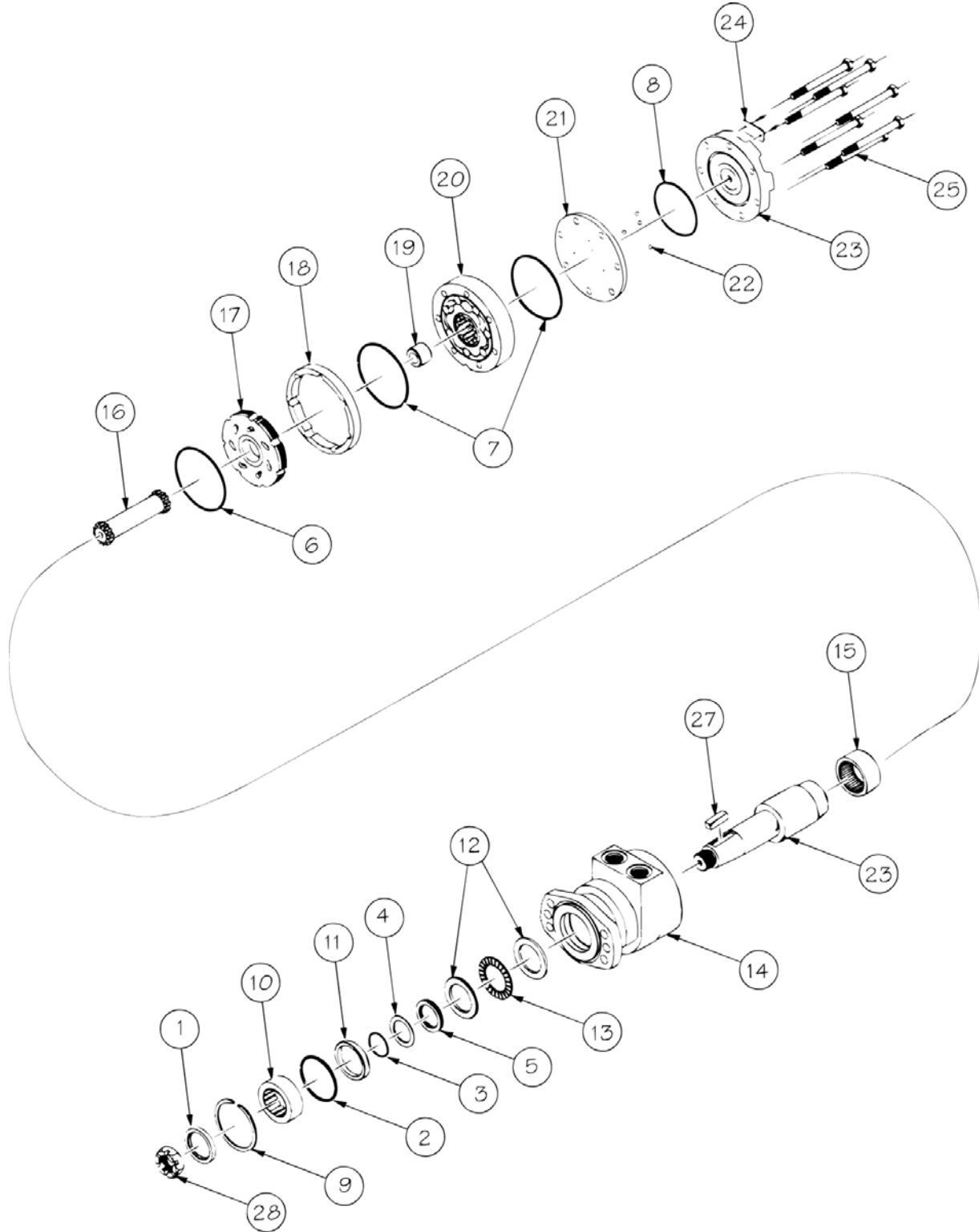
DESCRIPTION	HOUSING KIT
#67 WHEEL MOTOR W/ 7/8" O-RING PORTS	PE136728

SHAFTS AND RELATED COMPONENTS KITS

Shaft kits come with related shaft components (i.e., keys, nuts, etc.) to order individual shaft components (i.e. keys, nuts, bolts, washers or wire rings) use the kit number for each individual part. For nut kit, see miscellaneous kit list above.

EXPLODED VIEW ITEM #	26	27
DESCRIPTION	SHAFT KIT	KEY KIT
#30 1-1/2" STRAIGHT	PT011200	PB339105
#31 1-1/2" TAPERED	PE011305	PE449105
#33 1-1/4" TAPERED	PE011309	PE449101
#42 1-3/8" 6B SPLINE PTO	PE011605	—

RE 1.5" BEARING SAE "A" STYLE FLANGE MOTOR



RE 1.5" BEARING SAE "A" STYLE FLANGE MOTOR COMPONENTS

STANDARD SEAL KITS

Kit # PT666000
Includes Items 1 - 8

DESCRIPTION	EXPLODED VIEW ITEM #
DUST SEAL	1
HIGH PRESSURE SEAL	2
METAL BACKUP SHIM	3
TEFLON BACKUP SEAL	4
SHAFT SEAL	5
REAR HOUSING SEAL	6
BODY SEALS (2)	7
ENDCOVER SEAL	8

MISCELLANEOUS KITS

DESCRIPTION	EXPLODED VIEW ITEM #	KIT #
RETAINING SNAP RING	9	PE018141
1.5" BEARING	10	PE018241
SEAL CARRIER	11	PE018238
THRUST WASHER	12	PT018041
THRUST BEARING	13	PT018033
REAR HOUSING BEARING	15	PT018012
FORWARD MANIFOLD (CCW)	17	PE015006
REVERSE MANIFOLD (CW)	17	PE015007
MANIFOLD BOOT	18	PE018041
BALANCE PLATE (4 BALLS)	21 & 22	PE012001
STEEL BALL	22	PE018048
ENDCOVER	23	PE016001
1000 PSI RELIEF VALVE	NOT SHOWN	PE018228
2000 PSI RELIEF VALVE	NOT SHOWN	PE018231
3000 PSI RELIEF VALVE	NOT SHOWN	PE018221
1.125-18 UNEF SLOTTED HEX NUT	30	PT018038
1.125-18 UNEF SOLID HEX NUT	30	PT018054

ROTORS, DRIVE LINKS AND SPACERS, AND BOLTS

When changing motor displacements, a matching rotor and bolt set kit must be ordered. A new drive link kit may be necessary. Drive link spacers are included in drive link kits but may also be ordered separately by using the drive link spacer kit number.

EXPLODED VIEW ITEM #	20	20	16	16	19	25
DISPLACEMENT	STANDARD ROTOR KIT	FREETURN ROTOR KIT	DRIVE LINK KIT (for all shafts except #30 shaft)	DRIVE LINK KIT (for #30 shaft only)	DRIVE LINK SPACER KIT	BOLT SET KIT
07	PE087005	PE087008	PE014009	PE014030	—	PE445006
10	PE137005	PE137011	PE014009	PE014030	—	PE445006
12	PE167004	PE167011	PE014009	PE014014	PE018075	PE445012
14	PE147002	PE147004	PE014009	PE014014	PE018185	PE445014
16	PE227000	PE227004	PE014009	PE014014	PE018076	PE445014
18	PE247005	PE247011	PE014007	PE014015	—	PE445018
20	PE207000	PE207004	PE014008	PE014016	PE018076	PE445026
24	PE307005	PE307011	PE014008	PE014016	—	PE445024
26	PE357003	PE357005	PE014008	PE014016	PE018076	PE445026
32	PE407005	PE407011	PE014008	PE014016	PE018077	PE445032
45	PE607005	PE607011	PE014008	PE014016	PE018078	PE445045

HOUSING KITS

EXPLODED VIEW ITEM #14

Standard housing kits include rear bearing (#15) installed in the housing.

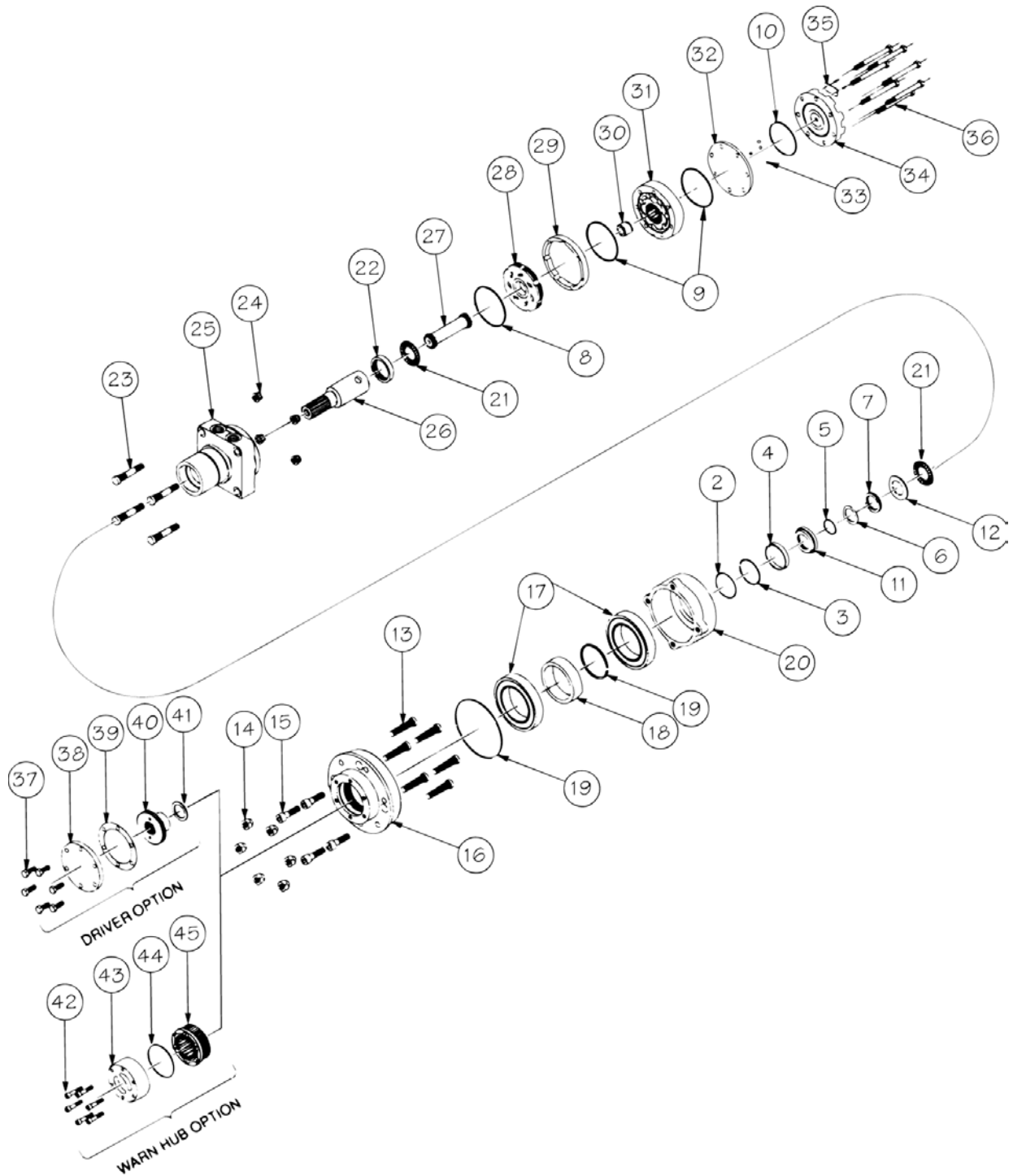
DESCRIPTION	HOUSING KIT
#62 6-HOLE SAE "A" STYLE FLANGE W/ 7/8" O-RING	PE136228
#66 6-HOLE SAE "A" STYLE FLANGE W/ 1/2" BSP.F	PE136628
#68 6-HOLE SAE "A" STYLE FLANGE W/ MNFLD. PORTS	PE136828
#92 6-HOLE SAE "A" STYLE FLANGE W/ 7/8" O-RING & RLF. PRT.	PE139268
#96 6-HOLE SAE "A" STYLE FLANGE W/ 1/2" BSP.F & RLF. PRT.	PE139628

SHAFTS AND RELATED COMPONENTS KITS

Shaft kits come with related shaft components (i.e., keys, nuts, etc.) to order individual shaft components (i.e. keys, nuts, bolts, washers or wire rings) use the kit number for each individual part. For nut kit, see miscellaneous kit list above.

EXPLODED VIEW ITEM #	26	27
DESCRIPTION	SHAFT KIT	KEY KIT
#30 1-1/2" STRAIGHT	PT011200	PB339105
#31 1-1/2" TAPERED	PE011305	PE449105
#33 1-1/4" TAPERED	PE011309	PE449101
#42 1-3/8" 6B SPLINE PTO	PE011605	—

RE 125 mm BEARING MOTOR



RE 125mm BEARING MOTOR COMPONENTS

STANDARD SEAL KITS

Kit # PE444125
Includes Items 1 - 10, 39

Kit # PE444003
Includes Items 11 - 12

DESCRIPTION	EXPLODED VIEW ITEM #
FLANGE SEAL	1
WIRE RING	2
METAL BACKUP SHIM	3
HIGH PRESSURE SEAL	4
METAL BACKUP SHIM	5
TEFLON BACKUP SEAL	6
SHAFT SEAL	7
REAR HOUSING SEAL	8
BODY SEAL	9
ENDCOVER SEAL	10
PAPER GASKET	39
SEAL CARRIER	11
THRUST WASHER	12

MISCELLANEOUS KITS

DESCRIPTION	EXPLODED VIEW ITEM #	KIT #
(6) STUDS & (6) LUG NUTS	13 & 14	PE013022
(4) CAPSCREWS	15	PE018086
WHEEL FLANGE	16	PE013035
125mm BEARING	17	PE018095
BEARING SPACER	18	PE018194
THRUST RING	19	PE018062
BEARING HUB	20	PE013055
THRUST BEARING	21	PE018059
REAR HOUSING BEARING	22	PE018002
(4) PLANETARY MNT. STUDS	23	PE018080
(4) MOUNTING NUTS	24	PE018112
FORWARD MANIFOLD (CCW)	28	PE015006
REVERSE MANIFOLD (CW)	28	PE015007
MANIFOLD BOOT	29	PE018041
BALANCE PLATE (4 BALLS)	32 & 33	PE012001
STEEL BALL	33	PE018048
ENDCOVER	34	PE016001
(6) DRIVER COVER SCREWS	37	PE018085
DRIVER COVER	38	PT018001
DRIVER	40	PE018179
SPACER	41	PE018114
WARN HUB ASSEMBLY	42-45	PE018099

ROTORS, DRIVE LINKS AND SPACERS, AND BOLTS

When changing motor displacements, a matching rotor and bolt set kit must be ordered. A new drive link kit may be necessary. Drive link spacers are included in drive link kits but may also be ordered separately by using the drive link spacer kit number.

EXPLODED VIEW ITEM #	31	31	27	30	36
DISPLACEMENT	STD ROTOR KIT	FREETURN ROTOR KIT	DRIVE LINK KIT	DRIVE LINK SPGR. KIT	BOLT SET KIT
07	PE087005	PE087008	PE014009	—	PE445006
10	PE137005	PE137011	PE014009	—	PE445006
12	PE167004	PE167011	PE014009	PE018075	PE445012
14	PE147002	PE147004	PE014009	PE018185	PE445014
16	PE227000	PE227004	PE014009	PE018076	PE445014
18	PE247005	PE247011	PE014007	—	PE445018
20	PE207000	PE207004	PE014008	PE018076	PE445026
24	PE307005	PE307011	PE014008	—	PE445024
26	PE357003	PE357005	PE014008	PE018076	PE445026
32	PE407005	PE407011	PE014008	PE018077	PE445032
45	PE607005	PE607011	PE014008	PE018078	PE445045

HOUSING KITS

EXPLODED VIEW ITEM #25

Standard housing kits include the rear bearing (#22) installed in the housing.

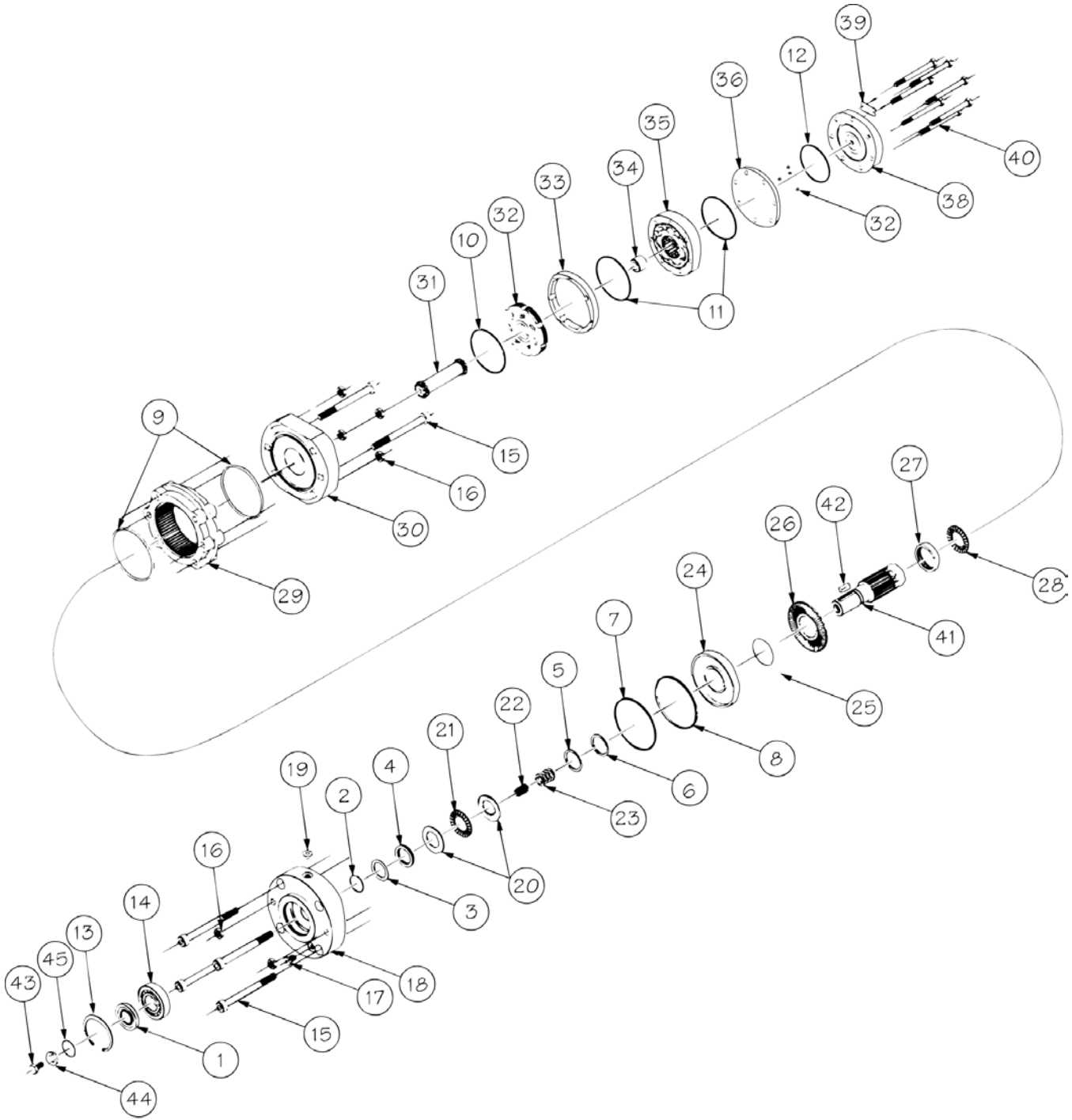
DESCRIPTION	HOUSING KIT
#10 SETBACK W/ 7/8" O-RING	PE131023

SHAFTS AND RELATED COMPONENTS KITS

Shaft kits come with related shaft components (i.e., keys, nuts, etc.) to order individual shaft components (i.e. keys, nuts, bolts, washers or wire rings) use the kit number for each individual part. For nut kit, see miscellaneous kit list above.

EXPLODED VIEW ITEM #	26
DESCRIPTION	SHAFT KIT
#08 19 TOOTH SPLINED	PE011102

RE 12 HOUSING BRAKE MOTOR



RE 12 HOUSING BRAKE MOTOR COMPONENTS

STANDARD SEAL KITS

Kit # PE444500
Includes Items 1 - 12

DESCRIPTION	EXPLODED VIEW ITEM #
DUST SEAL	1
METAL BACKUP SHIM	2
TEFLON BACKUP SEAL	3
SHAFT SEAL	4
SMALL O-RING PISTON SEAL	5
SMALL TEFLON PISTON SEAL	6
LARGE O-RING PISTON SEAL	7
LARGE TEFLON PISTON SEAL	8
HOUSING SEALS (2)	9
REAR HOUSING SEAL	10
BODY SEALS (2)	11
ENDCOVER SEAL	12

MISCELLANEOUS KITS

DESCRIPTION	EXPLODED VIEW ITEM #	KIT #
RETAINING SNAP RING	13	PE018141
72mm BEARING	14	PE018098
CAPSCREWS (6)	15	PE018135
NUTS (6)	16	PE018136
FRONT THRUST WASHER	20	PE018132
FRONT THRUST BEARING	21	PE018129
INNER & OUTER SPRINGS (22)	22 & 23	PE018181
PISTON	24	PE018180
DISK KIT FOR 12 BRAKE (16)	25 & 26	PE018115
DISK KIT FOR 13 BRAKE (16)	25 & 26	PE018191
REAR HOUSING BEARING	27	PE018002
REAR THRUST BEARING	28	PE018059
FORWARD MANIFOLD (CCW)	32	PE015006
REVERSE MANIFOLD (CW)	32	PE015007
MANIFOLD BOOT	33	PE018041
BALANCE PLATE (4 BALLS)	36 & 37	PE012001
STEEL BALL	37	PE018048
ENDCOVER	38	PE016001
1.00-20 UNEF SLOTTED NUT	NOT SHOWN	PE449304
1.00-20 UNEF SOLID NUT	NOT SHOWN	PE449303
1.00-20 UNEF PACK NUT	NOT SHOWN	PB339303P
1.00-20 UNEF POLY LCKNT	NOT SHOWN	PE449305

ROTORS, DRIVE LINKS AND SPACERS, AND BOLTS

When changing motor displacements, a matching rotor and bolt set kit must be ordered. A new drive link kit may be necessary. Drive link spacers are included in drive link kits but may also be ordered separately by using the drive link spacer kit number.

EXPLODED VIEW ITEM #	35	35	31	34	40
DISPLACEMENT	STD ROTOR KIT	FREETURN ROTOR KIT	DRIVE LINK KIT	DRIVE LINK SPGR. KIT	BOLT SET KIT
07	PE087005	PE087008	PE014009	—	PE445006
10	PE137005	PE137011	PE014009	—	PE445006
12	PE167004	PE167011	PE014009	PE018075	PE445012
14	PE147002	PE147004	PE014009	PE018185	PE445014
16	PE227000	PE227004	PE014009	PE018076	PE445014
18	PE247005	PE247011	PE014007	—	PE445018
20	PE207000	PE207004	PE014008	PE018076	PE445026
24	PE307005	PE307011	PE014008	—	PE445024
26	PE357003	PE357005	PE014008	PE018076	PE445026
32	PE407005	PE407011	PE014008	PE018077	PE445032
45	PE607005	PE607011	PE014008	PE018078	PE445045

HOUSING KITS

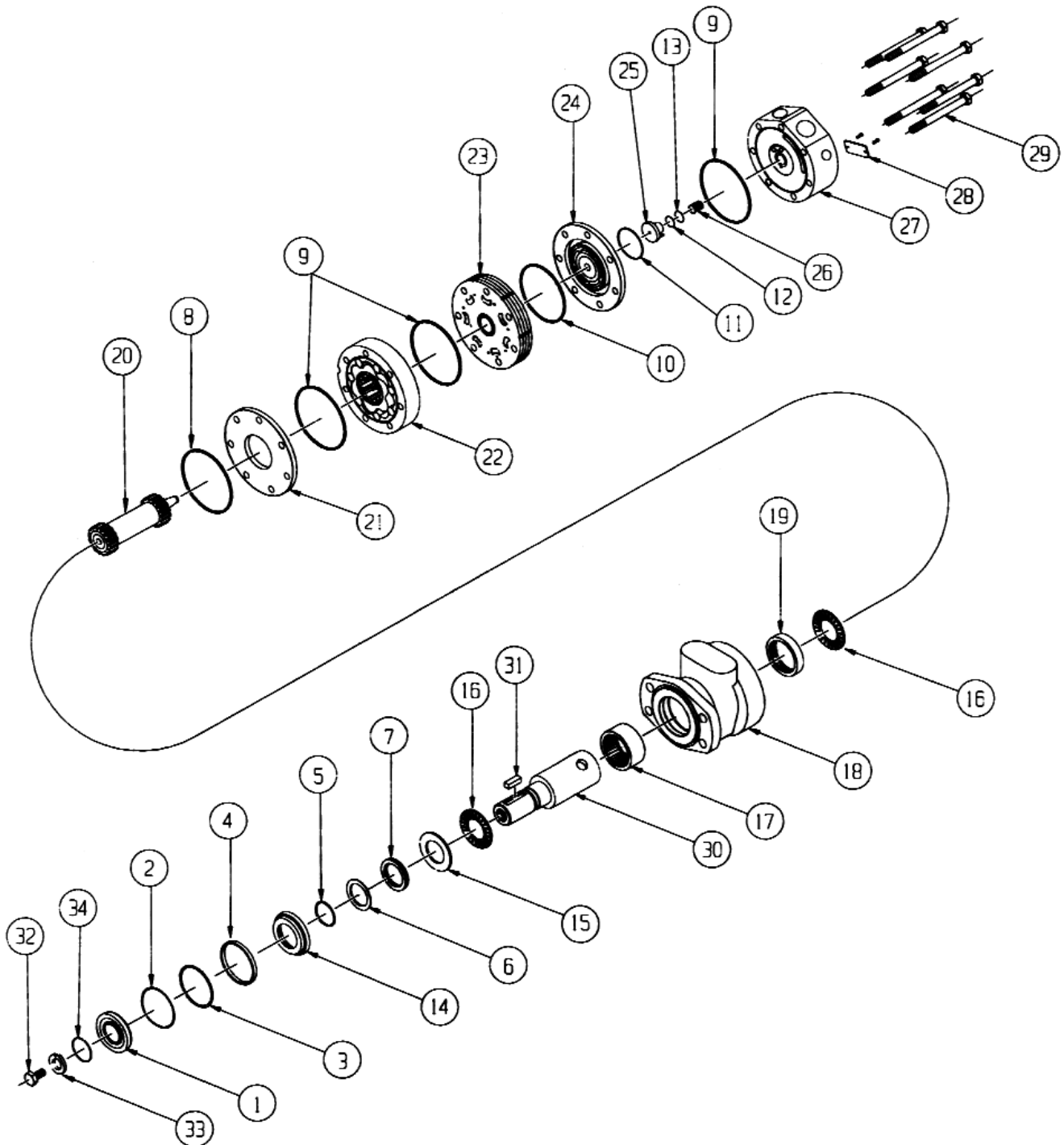
DESCRIPTION	EXPLODED VIEW ITEM #	HOUSING KIT
FRONT HOUSING SECTION (INCLUDES ITEMS #1, 13, 14 & 18)	18	PE131228
CENTER HOUSING SECTION	29	PE131201
REAR HOUSING SECTION (INCLUDES ITEMS #27 & 30)	30	PE131202

SHAFTS AND RELATED COMPONENTS KITS

Shaft kits come with related shaft components (i.e., keys, nuts, etc.) to order individual shaft components (i.e. keys, nuts, bolts, washers or wire rings) use the kit number for each individual part. For nut kit, see miscellaneous kit list above.

EXPLODED VIEW ITEM #	41	42	43	44	45
DESCRIPTION	SHAFT KIT	KEY KIT	BOLT KIT	WASHER KIT	WIRE RING KIT
#22 1-1/4" TAPERED	PE011303	PE449101	—	—	—
#23 1-1/4" STRAIGHT	PE011207	PE449105	PE449301	PE449302	PE449201
#24 19 TOOTH SPLINE	PE011111	—	—	—	PE449201
#25 14 TOOTH SPLINE	PE011112	—	—	—	PE449201
#26 32mm STRAIGHT	PE011208	PE449103	—	—	PE449201
#27 6B SPLINE	PE011603	—	—	—	—
#28 13 TOOTH SPLINE	PE011113	—	—	—	—
#29 1" STRAIGHT	PE011209	PE449100	—	—	—

STANDARD DR SERIES MOTOR



STANDARD DR SERIES MOTOR COMPONENTS

STANDARD SEAL KITS

Kit # PR555000
Includes Items 1 - 13

Kit # PE444003
Includes Items 14 - 15

DESCRIPTION	EXPLODED VIEW ITEM #
DUST SEAL	1
SPLIT WEAR RING	2
METAL BACKUP SHIM	3
HIGH PRESSURE SEAL	4
METAL BACK UP SHIM	5
TEFLON BACKUP SEAL	6
SHAFT SEAL	7
REAR HOUSING SEAL	8
BODY SEALS (3)	9
MANIFOLD SEALS	10
COMMUTATOR SEAL	11
O-RING SEAL	12
TEFLON BACKUP SEAL	13
SEAL CARRIER	14
THRUST WASHER	15

MISCELLANEOUS KITS

DESCRIPTION	EXPLODED VIEW ITEM #	KIT #
THRUST BEARINGS	16	PE018059
FRONT HOUSING BEARING (1" WIDE)	17	PE018003
REAR HOUSING BEARING (0.5" WIDE)	19	PE018002
DIVIDER PLATE	21	PE018004
MANIFOLD	23	PT668002
COMMUTATOR ASSEMBLY	24	PT668004
ENDCOVER PISTON	25	PT668006
PISTON SPRING	26	PT018046
1000 PSI RELIEF VALVE	NOT SHOWN	PE018228
2000 PSI RELIEF VALVE	NOT SHOWN	PE018231
3000 PSI RELIEF VALVE	NOT SHOWN	PE018221
7/8" O-RING PORT PLUG	NOT SHOWN	PE018021
1.00-20 UNEF SLOTTED NUT	NOT SHOWN	PE449304
1.00-20 UNEF SOLID NUT	NOT SHOWN	PE449303
1.00-20 UNEF PACK NUT	NOT SHOWN	PB339303P
1.00-20 UNEF POLY LOCK NUT	NOT SHOWN	PE449305

ROTORS, DRIVE LINKS, AND BOLTS

When changing motor displacements, a matching rotor, drive link, and bolt set kit must be ordered.

EXPLODED VIEW ITEM #	22	22	20	29
DISPLACEMENT	STD ROTOR KIT	FREETURN ROTOR KIT	DRIVE LINK KIT	BOLT SET KIT
16	PE227000	PE227004	PR140016	PT664019
19	PE247005	PE247011	PR140019	PT664025
25	PE307005	PE307011	PR140025	PT664028
27	PE357003	PE357005	PR140027	PT665028
33	PE407005	PE407011	PR140033	PT665033
46	PE607005	PE607011	PR140046	PT665066

HOUSING KITS

Standard housing kits include the front bearing (#17) and the rear bearing (#19) installed in the housing. Exploded view item #18. *Note - All housings require the use of (2) 7/8" O-ring port plugs. See misc. kits above for kit number.

DESCRIPTION	HOUSING KIT #	DESCRIPTION	HOUSING KIT #
#07-SETBACK FLANGE	PE130723	#16-2-HOLE SAE "A" STYLE	PE131623
#08-4-HOLES SAE "A" STYLE	PE130823	#18-6-HOLE SAE "A" STYLE	PE131823
#11-SETBACK W/BRAKE MOUNT	PE131123		

SHAFTS AND RELATED COMPONENTS KITS

Shaft kits come with related shaft components (i.e., keys, nuts, etc.) to order individual shaft components (i.e. keys, nuts, bolts, washers or wire rings) use the kit number for each individual part. To order nut kits, see miscellaneous kits list above.

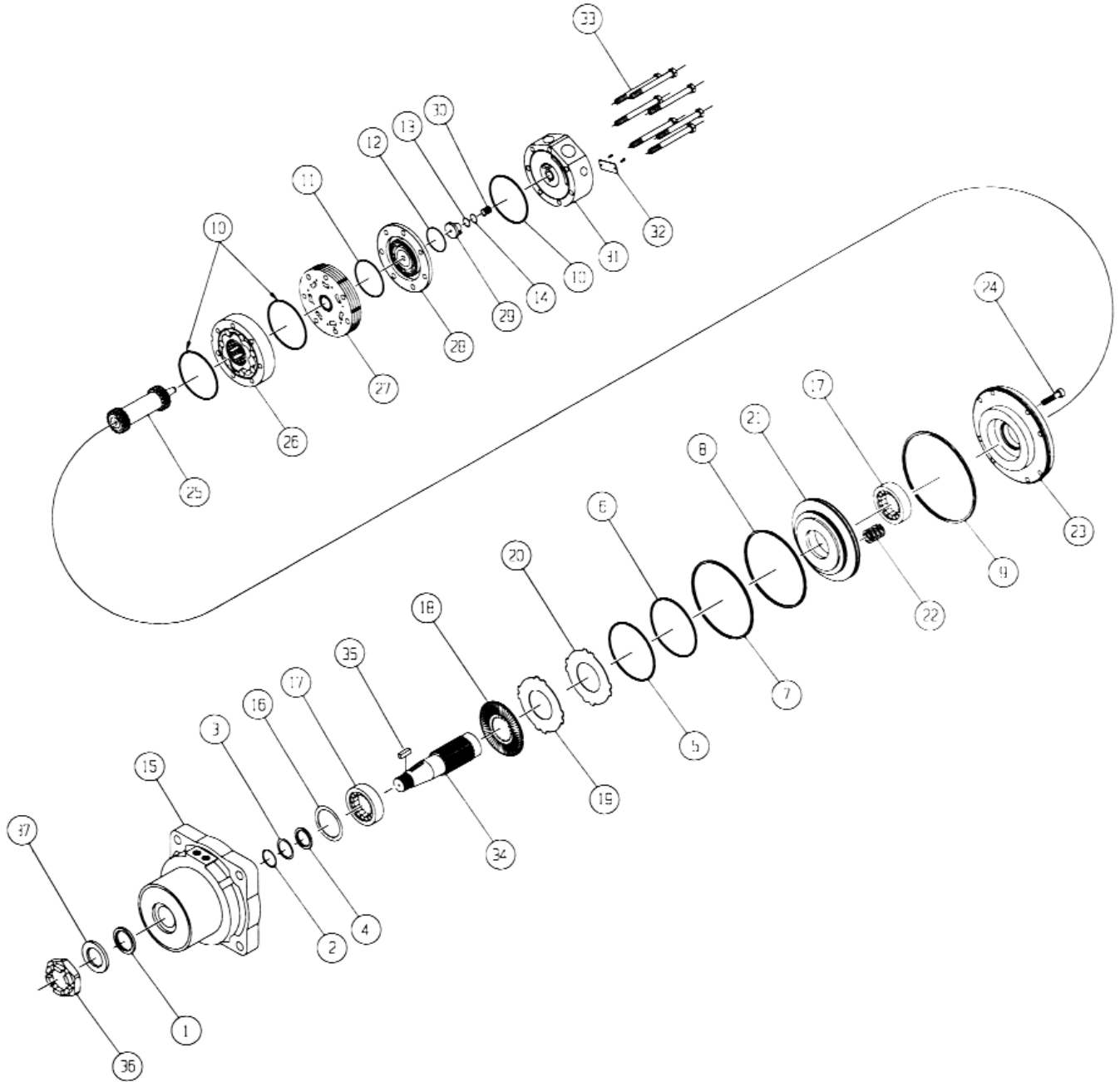
EXPLODED VIEW ITEM #	30	31	32	33	34
DESCRIPTION	SHAFT KIT	KEY KIT	BOLT KIT	WASHER KIT	WIRE RING KIT
#02- 6B SPLINE	PE011600	—	—	—	—
#03- 1-1/4" TAPERED	PE011300	PE449101	—	—	PE449201
#04- 1-1/4" STRAIGHT	PE011200	PE449102	PE449301	PE449302	PE449201
#05- 14 TOOTH SPLINE	PE011101	—	—	—	—
#06- 1" STRAIGHT	PE011201	PE449100	—	—	—
#07- 25MM STRAIGHT	PE011109	PE449104	—	—	PE449201
#08- 19 TOOTH SPLINE	PE011102	—	—	—	PE449201
#09- 32MM STRAIGHT	PE011203	PE449103	—	—	—
#11- 15 TOOTH SPLINE	PE011103	—	—	—	—
#13- 1" STRAIGHT EXTENDED	PE011202	PE449100	—	—	—
#18- 12 TOOTH SPLINE	PE011108	—	—	—	—
#32- 13 TOOTH SPLINE	PE011114	—	—	—	—
#34- 12 TOOTH SPLINE (BK)	PE011116	—	—	—	—

ENDCOVER KITS

Endcover kits come assembled with exploded view item numbers 12, 13, 25 & 26. To order a relief valve for the relief port endcovers, see the misc. kits listed above for the relief value kit numbers.

EXPLODED VIEW ITEM #	27	27	27	27
DESCRIPTION	STANDARD ENDCOVER KIT	RELIEF PORT ENDCOVER KIT	SHUTTLE VALVE ENDCOVER KIT	RELIEF & SHUTTLE VALVE ENDCOVER KIT
#0- 7/8 O-RING REAR PORTS (ROUND)	PT160000	PT160000R	PT160000D	PT160000DR
#3- MANIFOLD PORTS (D-SHAPED)	—	—	PT160003D	—
#5- 1-1/16 O-RING PORTS (ROUND)	PT160005	PT160005R	PT160005D	PT160005DR
#7- 3/4 BSP.F PORTS (ROUND)	PT160007	PT160007R	PT160007D	PT160007DR
#8- 1-1/16 O-RIGN PORTS (D-SHAPED)	PT160008	—	—	—
#9- 3/4 BSP.F PORTS (D-SHAPED)	PT160009	—	—	—

DT SETBACK BRAKE MOTOR



DT SETBACK BRAKE MOTOR COMPONENTS

STANDARD SEAL KITS

Kit # PT666750
Includes Items 1 - 14

DESCRIPTION	EXPLODED VIEW ITEM #
DUST SEAL	1
METAL BACKUP SHIM	2
TEFLON BACKUP SEAL	3
SHAFT SEAL	4
SMALL O-RING SEAL	5
SMALL TEFLON SEAL	6
LARGE O-RING SEAL	7
LARGE TEFLON SEAL	8
O-RING SEAL	9
BODY SEALS (3)	10
MANIFOLD SEAL	11
COMMUTATOR SEAL	12
PISTON O-RING SEAL	13
PISTON TEFLON SEAL	14

MISCELLANEOUS KITS

DESCRIPTION	EXPLODED VIEW ITEM #	KIT #
SPACER SHIMS	16	PB018086
SHAFT BEARING	17	PT018011
FRICTION DISKS & STAMPINGS (22)	18-20	PE018232
PISTON	21	PT018088
SPRINGS (25)	22	PE018182
CAPSCREWS (8)	24	PS018074
MANIFOLD	27	PT668002
COMMUTATOR ASSEMBLY	28	PT668003
ENDCOVER PISTON	29	PT668004
PISTON SPRING	30	PT018046
1000 PSI RELIEF VALVE	NOT SHOWN	PE018228
2000 PSI RELIEF VALVE	NOT SHOWN	PE018231
3000 PSI RELIEF VALVE	NOT SHOWN	PE018221
M42 X 3 CASTLE NUT	36	PT669303

ROTORS, DRIVE LINKS AND SPACERS, AND BOLTS

When changing motor displacements, a matching rotor and bolt set kit must be ordered.

EXPLODED VIEW ITEM #	26	26	25	33
DISPLACEMENT	STD ROTOR KIT	FREETURN ROTOR KIT	DRIVE LINK KIT	BOLT SET KIT
19	PT662019	PT662019F	PT140019	PT664019
25	PT662025	PT662025F	PT140025	PT664025
28	PT662028	PT662028F	PT140028	PT664028
33	PT662033	PT662033F	PT140033	PT664033
46	PT662046	PT662046F	PT140046	PT664046
56	PT662056	—	PT140056	PT664056
66	PT662066	PT662066F	PT140066	PT664066
91	PT662091	—	PT140091	PT664091
99	PT662099	—	PT140099	PT664099

HOUSING KITS

DESCRIPTION	EXPLODED VIEW ITEM #	HOUSING KIT
#33- DT SETBACK BRAKE REAR HOUSING	15 23	PT130033 PT013011

SHAFTS AND RELATED COMPONENTS KITS

Shaft kits come with related shaft components (i.e.. keys, nuts, etc.) to order individual shaft components (i.e. keys, nuts, bolts, washers or wire rings) use the kit number for each individual part. For nut kit, see miscellaneous kit list above.

EXPLODED VIEW ITEM #	34	35	36	37
DESCRIPTION	SHAFT KIT	KEY KIT	NUT KIT	WASHER KIT
#29- 2" STRAIGHT	PT110029	PT669105	—	PT669306
#30- 55mm TAPERED	PT110030	PT669107	PT669303	PT669307

ENDCOVER KITS

Endcover kits come assembled with exploded view item numbers 13, 14, 29 & 30. To order a relief valve for the relief port endcovers , see the misc. kits listed above for the relief value kit numbers.

EXPLODED VIEW ITEM #	31	31
DESCRIPTION	STANDARD ENDCOVER KIT	RELIEF PORT ENDCOVER KIT
#0- 7/8 O-RING REAR PORTS (ROUND)	PT160000	PT160000R
#5- 1-1/16 O-RING PORTS (ROUND)	PT160005	PT160005R
#7- 3/4 BSP.F PORTS (ROUND)	PT160007	PT160007R
#8- 1-1/16 O-RIGN PORTS (D-SHAPED)	PT160008	—
#9- 3/4 BSP.F PORTS (D-SHAPED)	PT160009	—

DT 125 mm BEARING MOTOR

