

WABCO TRUCKS

Kit Number	Code (Pg. vi)	Rod X Bore Size	List Price
WBC-587294	6-1/4, 8-1/8, 9-3/4	3 Stage Tele.	\$ 628.43
WBC-AK0076	P-U-10	2-1/2 X 5	89.60
WBC-AK0700	3-3/4, 5-1/4, 6-3/4	3 Stage Tele.	273.59
WBC-RK1655	3-3/4, 5-1/4, 6-3/4	3 Stage Tele.	332.52

WALTCO LIFT GATE

Kit Number	Code (Pg. vi)	Rod X Bore Size	List Price
WC-1111-5	I-OB-10	1-1/4 X 4	\$ 8.00
WC-20280095	I-OB-10	1-3/4 X 4	9.10
WC-2500	I-OB-10	1-3/4 X 4	6.76
WC-70270081	I-OB-3	2 X 4-3/4	7.06
WC-70270091	N-OB-3	2 X 4-3/4	4.95
WC-70270681	I-U-4	2 X 4-3/4	18.94
WC-LD-81	I-OB-10	1-1/4 X 4	8.24

WARD TELESCOPIC CYLINDER PARTS

PACKING: Vee packing with top and bottom adapters. All .275 c.s.

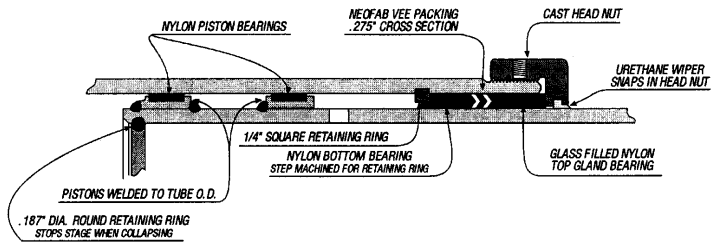
WIPERS: Urethane snap-in type.

BEARINGS: Originally nylon, reinforced with metal. Outer bearing is flat on both sides. Inner bearing is step-cut on o.d. to pilot over snap ring.

PISTON: Steel, welded to stage. Double action has 3 replaceable nylon wear rings and 2 cast iron piston rings in separate grooves. Single action has 2 replaceable nylon wear rings.

STAGE O.D.'s: 3.950", 4.950", 5.950", 6.950", 7.950", 8.950"

SPECIAL INFO: 1/4" spring steel snap ring serves as internal stop. Gland collars are cast steel, have square reliefs in casting and "ears" on bottom of gland collar for set screw.



Part Number	Description	List Price
PACKING & WIPER		
WD-3VSW	2.950" I.D. Vee Set & Wiper	\$ 13.09
WD-4VSW	3.950" I.D. Vee Set & Wiper	15.92
WD-5VSW	4.950" I.D. Vee Set & Wiper	20.21
WD-6VSW	5.950" I.D. Vee Set & Wiper	25.56
WD-7VSW	6.950" I.D. Vee Set & Wiper	31.12
WD-8VSW	7.950" I.D. Vee Set & Wiper	37.40
WD-9VSW	8.950" I.D. Vee Set & Wiper	50.09

TOP BEARINGS		
WD-4NGTB	3.950" I.D. Top Bearing	\$ 31.65
WD-5NGTB	4.950" I.D. Top Bearing	35.84
WD-6NGTB	5.950" I.D. Top Bearing	37.49
WD-7NGTB	6.950" I.D. Top Bearing	51.82
WD-8NGTB	7.950" I.D. Top Bearing	64.88
WD-9NGTB	8.950" I.D. Top Bearing	65.76

BOTTOM BEARINGS		
WD-4NGBB	3.950" I.D. Bottom Bearing	\$ 31.65
WD-5NGBB	4.950" I.D. Bottom Bearing	35.84
WD-6NGBB	5.950" I.D. Bottom Bearing	51.43
WD-7NGBB	6.950" I.D. Bottom Bearing	51.82
WD-8NGBB	7.950" I.D. Bottom Bearing	64.88
WD-9NGBB	8.950" I.D. Bottom Bearing	65.76

Part Number	Description	List Price
PISTON WEAR RINGS		
WD310-737-40	4-1/2" O.D. Piston Wear Rings	\$ 2.73
WD310-737-50	5-1/2" O.D. Piston Wear Rings	2.73
WD310-764-60	6-1/2" O.D. Piston Wear Rings	3.59
WD310-764-70	7-1/2" O.D. Piston Wear Rings	4.18
WD310-764-80	8-1/2" O.D. Piston Wear Rings	6.15
WD310-764-90	9-1/2" O.D. Piston Wear Rings	7.30

SNAP RINGS		
WD560-009-40	4-1/2" Stage I.D. Snap Ring	\$ 50.68
WD560-009-90	9-1/2" Stage I.D. Snap Ring	71.89

PISTON RINGS - DOUBLE ACTION ONLY		
WD505-066-17	4-1/2" O.D. Piston Ring	\$ 8.44
WD505-066-24	5-1/2" O.D. Piston Ring	11.78
WD505-066-28	6-1/2" O.D. Piston Ring	13.62
WD505-066-35	7-1/2" O.D. Piston Ring	27.50
WD505-066-38	8-1/2" O.D. Piston Ring	30.66
WD505-066-40	9-1/2" O.D. Piston Ring	44.00

WARD TELESCOPIC CYLINDER PARTS

Part Number	Description	List Price
WD-48	4" - 8" Vee Sets & Wipers	\$ 136.71
WD-TNB48	4" - 8" Top Bearings	221.60
WD-BNB48	4" - 8" Bottom Bearings	235.61
WD-SR48	4" - 8" Snap Rings	273.49
WD-WR48	4-1/2" - 8-1/2" Piston Wear Rings	60.49
WD-PR48	4-1/2" - 8-1/2" Piston Rings	148.51
WD-49	4" - 9" Vee Sets & Wipers	189.29
WD-TNB49	4" - 9" Top Bearings	287.43
WD-BNB49	4" - 9" Bottom Bearings	301.37
WD-SR49	4" - 9" Snap Rings	344.70
WD-WR49	4-1/2" - 9-1/2" Piston Wear Rings	81.00
WD-PR49	4-1/2" - 9-1/2" Piston Rings	227.75

WAYNE-RHINO GARBAGE BODY

Kit Number	Cylinder	Code (Pg. vi)	Rod X Bore Size	List Price
WR-537-082-000		I-O-10	1-1/2 X 2-1/2	\$ 7.01
WR-537-083-090		I-U-10	1-3/4 X 4-1/2	12.25
WR-537-122-200		I-U-11	2 X 3-1/8	26.37
WR-537-152-000		I-U-11	2-1/2 X 5	40.95
WR-537115000	AC-13574	I-U-5	1-1/8 X 2-1/2	21.27
WR-537116000	AC-15941	I-U-5	1-1/2 X 3-1/2	21.15
WR-537118000	AC-13574	I-U-5	1-3/4 X 3-1/2	24.85

WHITE LIFT TRUCK

Kit Number	Code (Pg. vi)	Rod X Bore	List Size
WLT-20-7300283	I-U-4	1-3/4 X 4	\$ 34.06
WLT-20-7302715	I-U-10	1-1/2 X 3-1/2	18.98
WLT-30-3305457	P-U-10	1-1/2 X 3-1/2	19.41

WINDHAM LIFT

Kit Number	Code (Pg. vi)	Rod X Bore Size	List Price
WDHM-11520	N-U-5	1-1/2 X 3	\$ 22.69
WDHM-3332	I-OB-3	2-1/2 X 4	8.93
WDHM-3335	I-U-5	3-1/2 X 7	73.79
WDHM-3338	I-U-5	1-1/4 X 3	23.33
WDHM-3545	I-U-5	3 X 6	64.63
WDHM-430041	P-U-10	1-1/4 X 2-1/2	12.19
WDHM-430048	I-U-10	1-1/2 X 3	13.94
WDHM-430086	I-U-10	1-1/2 X 3-1/2	14.64
WDHM-430104	I-U-10	2 X 4	19.77
WDHM-430110	I-U-10	3 X 5	26.83
WDHM-430117	I-U-10	3-1/2 X 6	28.47
WDHM-6600	I-U-5	3 X 5	48.48
WDHM-6601	I-U-5	3 X 6	58.80
WDHM-7993	I-U-5	1-1/4 X 2-1/2	16.62
WDHM-7994	I-U-3	2 X 5	17.21
WDHM-8808	I-U-5	4 X 7	76.36
WDHM-8809	I-U-4	2 X 4	21.29
WDHM-8882	I-U-5	2 X 5	52.38
WDHM-9450	I-U-5	1-1/4 X 2-1/2	20.30
WDHM-9454	I-U-5	3 X 5	56.18
WDHM-AS1152	I-U-5	4 X 8	106.64

WHITEMAN/CONSPRAY

Kit Number	Code (Pg. vi)	Rod X Bore Size	List Price
WCS-02KS-4963	I-U-11	3 X 4	\$ 23.11
WCS-02KS-4964	I-U-5	3-1/2 X 8	94.74
WCS-02KS-4966	I-U-10	5-1/2 X 6-1/2	89.84
WCS-02KS-85A		Pump Kit	8.62
WCS-02KS-954		6" Rod Kit	60.31
WCS-05KS-8451	I-U-10	1-3/4 X 3-1/4	35.57
WCS-05KS-8451-2	I-U-10	1-3/4, 2 X 3-1/4	36.50