

THE KING LINE

2500 PSI DOUBLE ACTING TIE ROD CYLINDERS

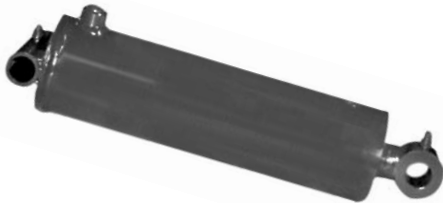


FEATURES:

- Honed tubing (SAE-9000 & SAE 9100 series have cylinder finish tubing)
- Heavy duty, high strength tie rods
- Chromed, ground & polished piston rod will operate at full pressure through 16" stroke
- Cast iron piston, ductile iron butt, gland & clevis
- Carboxilated nitrile u-cup & urethane wiper in gland
- Pins & clips included
- Standard color is red
- Stroke control may be installed on 8" strokes
- Side ports available on request at no additional cost

THE ROYAL LINE

2500 PSI DOUBLE ACTING CYLINDERS



FEATURES:

- Honed tubing
- Heavy duty welded construction
- Chromed, ground & polished piston rod
- Cast iron piston & gland
- Pin eye mounting on both ends
- Quad ring/backup washer & urethane wiper in gland
- O-ring/backup washers & cast iron ring for piston seals
- Truarc type gland retainer
- Standard color is red

THE GLADIATOR LINE

3000 PSI DOUBLE ACTING CYLINDERS



FEATURES:

- Heavy duty welded construction
- 3000 PSI (2:1 safety factor for buckling on 36" stroke and less. Longer stroke consult factory)
- Steel gland cap retainer with lock screw
- 3/4 NPTF full-flow ports
- Standard color is highway yellow
- High grade gray iron piston & gland
- Precision skived tube for long seal life
- All steel spacer tube for bearing length on 48" or more of stroke
- Ground and polished chrome C-1045 steel piston rod for maximum life
- Heavy duty torqued locknut for piston retainer
- Polyurethane "U" cup and heavy duty wiper in gland. Crown seal with bearing rings on piston

THE SWORD LINE

3000 PSI DOUBLE ACTING CYLINDERS



FEATURES:

- Skived, honed tubing
- Heavy duty welded construction
- Chromed, ground & polished piston rod will operate at full pressure through 16" stroke
- Cast iron piston, cast steel butt, gland & clevis
- Carboxilated nitrile u-cup & urethane wiper in gland, crown seal on piston
- Square ring gland retainer provides positive lock
- Pins & clips included
- Standard color is white
- Stroke control may be installed on 8" strokes

Tie-Rod Cylinders



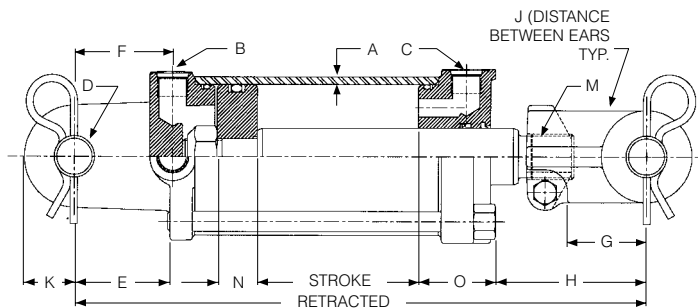
THE KING LINE

2500 PSI DOUBLE ACTING TIE ROD CYLINDERS



FEATURES:

- Honed tubing (SAE-9000 & SAE 9100 series have cylinder finish tubing)
- Heavy duty, high strength tie rods
- Chromed, ground & polished piston rod will operate at full pressure through 16" stroke
- Cast iron piston, ductile iron butt, gland & clevis
- Carboxylated nitrile u-cup & urethane wiper in gland
- Pins & clips included
- Standard color is red
- Stroke control may be installed on 8" strokes
- Side ports available on request at no additional cost



ORDER NO.	MFGR. NO.	BORE	STROKE	ROD DIA.	RETRACT. DIMEN.	SHIP WT.	B/C	A	PORT SIZE	D	E	F	G	H	J	K	M	N	O
PTR-2012	9012	2	12	1 1/8	22 1/4	25	1/8	3/4-16 SAE	1.015	2 7/16	2 3/8	1 13/16	3 1/4	1.06	15/16	1 1/8-12	7/8	2 3/8	
PTR-2014	9014	2	14	1 1/8	24 1/4	26	1/8	3/4-16 SAE	1.015	2 7/16	2 3/8	1 13/16	3 1/4	1.06	15/16	1 1/8-12	7/8	2 3/8	
PTR-2016A	9016	2	16	1 1/8	31 1/2	28	1/8	3/4-16 SAE	1.015	2 7/16	2 3/8	1 13/16	8 1/2	1.06	15/16	1 1/8-12	7/8	2 3/8	
PTR-2018	9018	2	18	1 1/8	28 1/4	29	1/8	3/4-16 SAE	1.015	2 7/16	2 3/8	1 13/16	3 1/4	1.06	15/16	1 1/8-12	7/8	2 3/8	
PTR-2020	9020	2	20	1 1/8	30 1/4	31	1/8	3/4-16 SAE	1.015	2 7/16	2 3/8	1 13/16	3 1/4	1.06	15/16	1 1/8-12	7/8	2 3/8	
PTR-2024	9024	2	24	1 1/8	34 1/4	35	1/8	3/4-16 SAE	1.015	2 7/16	2 3/8	1 13/16	3 1/4	1.06	15/16	1 1/8-12	7/8	2 3/8	
PTR-2030	9030	2	30	1 1/8	40 1/4	39	1/8	3/4-16 SAE	1.015	2 7/16	2 3/8	1 13/16	3 1/4	1.06	15/16	1 1/8-12	7/8	2 3/8	
PTR-2508	9108	2 1/2	8	1 1/4	20 1/4	25	1/8	3/4-16 SAE	1.015	2 7/16	2 3/8	1 13/16	5 1/4	1.06	15/16	1 1/8-12	1	2 3/8	
PTR-2510	9110	2 1/2	10	1 1/4	20 1/4	26	1/8	3/4-16 SAE	1.015	2 7/16	2 3/8	1 13/16	3 1/4	1.06	15/16	1 1/8-12	1	2 3/8	
PTR-2512	9112	2 1/2	12	1 1/4	22 1/4	27	1/8	3/4-16 SAE	1.015	2 7/16	2 3/8	1 13/16	3 1/4	1.06	15/16	1 1/8-12	1	2 3/8	
PTR-2514	9114	2 1/2	14	1 1/4	24 1/4	29	1/8	3/4-16 SAE	1.015	2 7/16	2 3/8	1 13/16	3 1/4	1.06	15/16	1 1/8-12	1	2 3/8	
PTR-2516A	9116	2 1/2	16	1 1/4	31 1/2	33	1/8	3/4-16 SAE	1.015	2 7/16	2 3/8	1 13/16	8 1/2	1.06	15/16	1 1/8-12	1	2 3/8	
PTR-2518	9118	2 1/2	18	1 1/4	28 1/4	34	1/8	3/4-16 SAE	1.015	2 7/16	2 3/8	1 13/16	3 1/4	1.06	15/16	1 1/8-12	1	2 3/8	
PTR-2520	9120	2 1/2	20	1 1/4	30 1/4	36	1/8	3/4-16 SAE	1.015	2 7/16	2 3/8	1 13/16	3 1/4	1.06	15/16	1 1/8-12	1	2 3/8	
PTR-2524	9124	2 1/2	24	1 1/4	34 1/4	39	1/8	3/4-16 SAE	1.015	2 7/16	2 3/8	1 13/16	3 1/4	1.06	15/16	1 1/8-12	1	2 3/8	
PTR-2530	9130	2 1/2	30	1 1/4	40 1/4	44	1/8	3/4-16 SAE	1.015	2 7/16	2 3/8	1 13/16	3 1/4	1.06	15/16	1 1/8-12	1	2 3/8	
PTR-3008	9208	3	8	1 3/8	20 1/4	32	3/16	3/4-16 SAE	1.015	2 7/16	2 7/16	1 13/16	5 1/4	1.06	15/16	1 1/8-12	1	1 15/16	
PTR-3010	9210	3	10	1 3/8	20 1/4	33	3/16	3/4-16 SAE	1.015	2 7/16	2 7/16	1 13/16	3 3/4	1.06	15/16	1 1/8-12	1	1 15/16	
PTR-3012	9212	3	12	1 3/8	22 1/4	33	3/16	3/4-16 SAE	1.015	2 7/16	2 7/16	1 13/16	3 3/4	1.06	15/16	1 1/8-12	1	1 15/16	
PTR-3014	9214	3	14	1 3/8	24 1/4	35	3/16	3/4-16 SAE	1.015	2 7/16	2 7/16	1 13/16	3 3/4	1.06	15/16	1 1/8-12	1	1 15/16	
PTR-3016A	9216	3	16	1 3/8	31 1/2	39	3/16	3/4-16 SAE	1.015	2 7/16	2 7/16	1 13/16	9	1.06	15/16	1 1/8-12	1	1 15/16	
PTR-3018	9218	3	18	1 3/8	28 1/4	42	3/16	3/4-16 SAE	1.015	2 7/16	2 7/16	1 13/16	3 3/4	1.06	15/16	1 1/8-12	1	1 15/16	
PTR-3020	9220	3	20	1 3/8	30 1/4	45	3/16	3/4-16 SAE	1.015	2 7/16	2 7/16	1 13/16	3 3/4	1.06	15/16	1 1/8-12	1	1 15/16	
PTR-3024	9224	3	24	1 3/8	34 1/4	47	3/16	3/4-16 SAE	1.015	2 7/16	2 7/16	1 13/16	3 3/4	1.06	15/16	1 1/8-12	1	1 15/16	
PTR-3030	9230	3	30	1 3/8	40 1/4	53	3/16	3/4-16 SAE	1.015	2 7/16	2 7/16	1 13/16	3 3/4	1.06	15/16	1 1/8-12	1	1 15/16	
PTR-3036	9236	3	36	1 3/8	46 1/4	61	3/16	3/4-16 SAE	1.015	2 7/16	2 7/16	1 13/16	3 3/4	1.06	15/16	1 1/8-12	1	1 15/16	
PTR-3048	9248	3	48	1 3/8	58 1/4	66	3/16	3/4-16 SAE	1.015	2 7/16	2 7/16	1 13/16	3 3/4	1.06	15/16	1 1/8-12	1	1 15/16	
PTR-3508	9308A	3 1/2	8	1 3/8	20 1/4	35	3/16	3/4-16 SAE	1.015	2 3/8	2 7/16	1 13/16	5 1/4	1.06	1 1/4	1 1/8-12	1	1 13/16	
PTR-3510	9310A	3 1/2	10	1 3/8	20 1/4	36	3/16	3/4-16 SAE	1.015	2 3/8	2 7/16	1 13/16	3 3/4	1.06	1 1/4	1 1/8-12	1	1 13/16	
PTR-3512	9312A	3 1/2	12	1 3/8	22 1/4	38	3/16	3/4-16 SAE	1.015	2 3/8	2 7/16	1 13/16	3 3/4	1.06	1 1/4	1 1/8-12	1	1 13/16	
PTR-3514	9314A	3 1/2	14	1 3/8	24 1/4	41	3/16	3/4-16 SAE	1.015	2 3/8	2 7/16	1 13/16	3 3/4	1.06	1 1/4	1 1/8-12	1	1 13/16	
PTR-3516A	9316A	3 1/2	16	1 3/8	31 1/2	46	3/16	3/4-16 SAE	1.015	2 3/8	2 7/16	1 13/16	9	1.06	1 1/4	1 1/8-12	1	1 13/16	
PTR-3518	9318A	3 1/2	18	1 3/8	28 1/4	47	3/16	3/4-16 SAE	1.015	2 3/8	2 7/16	1 13/16	3 3/4	1.06	1 1/4	1 1/8-12	1	1 13/16	
PTR-3520	9320A	3 1/2	20	1 3/8	30 1/4	49	3/16	3/4-16 SAE	1.015	2 3/8	2 7/16	1 13/16	3 3/4	1.06	1 1/4	1 1/8-12	1	1 13/16	
PTR-3524	9324A	3 1/2	24	1 3/8	34 1/4	54	3/16	3/4-16 SAE	1.015	2 3/8	2 7/16	1 13/16	3 3/4	1.06	1 1/4	1 1/8-12	1	1 13/16	
PTR-3530	9330A	3 1/2	30	1 3/8	40 1/4	64	3/16	3/4-16 SAE	1.015	2 3/8	2 7/16	1 13/16	3 3/4	1.06	1 1/4	1 1/8-12	1	1 13/16	
PTR-3536	9336A	3 1/2	36	1 3/8	46 1/4	66	3/16	3/4-16 SAE	1.015	2 3/8	2 7/16	1 13/16	3 3/4	1.06	1 1/4	1 1/8-12	1	1 13/16	
PTR-3548	9348A	3 1/2	48	1 3/8	58 1/4	73	3/16	3/4-16 SAE	1.015	2 3/8	2 7/16	1 13/16	3 3/4	1.06	1 1/4	1 1/8-12	1	1 13/16	



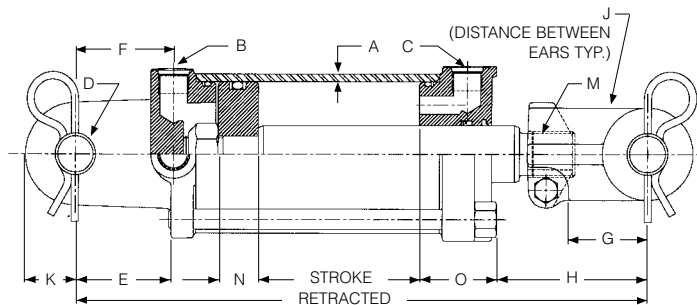
Tie-Rod Cylinders

FEATURES:

- Honed tubing (SAE-9000 & SAE 9100 series have cylinder finish tubing)
- Heavy duty, high strength tie rods
- Chromed, ground & polished piston rod will operate at full pressure through 16" stroke
- Cast iron piston, ductile iron butt, gland & clevis
- Carboxilated nitrile u-cup & urethane wiper in gland
- Pins & clips included
- Standard color is red
- Stroke control may be installed on 8" strokes
- Side ports available on request at no additional cost

THE KING LINE

2500 PSI DOUBLE ACTING TIE ROD CYLINDERS



ORDER NO.	MFGR. NO.	BORE	STROKE	ROD DIA.	RETRACT. DIMEN.	SHIP WT.	B/C											
							A	PORT SIZE	D	E	F	G	H	J	K	M	N	O
PTR-4008	9408	4	8	1 3/4	20 1/4	45	3/16	3/4-16 SAE	1.015	2 5/16	2 7/16	1 7/8	5 1/4	1.06	1 1/4	1 1/2-12	1	1 13/16
PTR-4010	9410	4	10	1 3/4	20 1/4	48	3/16	3/4-16 SAE	1.015	2 5/16	2 7/16	1 7/8	3 3/4	1.06	1 1/4	1 1/2-12	1	1 13/16
PTR-4012	9412	4	12	1 3/4	22 1/4	49	3/16	3/4-16 SAE	1.015	2 5/16	2 7/16	1 7/8	3 3/4	1.06	1 1/4	1 1/2-12	1	1 13/16
PTR-4014	9414	4	14	1 3/4	24 1/4	51	3/16	3/4-16 SAE	1.015	2 5/16	2 7/16	1 7/8	3 3/4	1.06	1 1/4	1 1/2-12	1	1 13/16
PTR-4016A	9416	4	16	1 3/4	31 1/2	61	3/16	3/4-16 SAE	1.015	2 5/16	2 7/16	1 7/8	8 1/2	1.06	1 1/4	1 1/2-12	1	1 13/16
PTR-4018	9418	4	18	1 3/4	28 1/4	62	3/16	3/4-16 SAE	1.015	2 5/16	2 7/16	1 7/8	3 3/4	1.06	1 1/4	1 1/2-12	1	1 13/16
PTR-4020	9420	4	20	1 3/4	30 1/4	72	3/16	3/4-16 SAE	1.015	2 5/16	2 7/16	1 7/8	3 3/4	1.06	1 1/4	1 1/2-12	1	1 13/16
PTR-4024	9424	4	24	1 3/4	34 1/4	74	3/16	3/4-16 SAE	1.015	2 5/16	2 7/16	1 7/8	3 3/4	1.06	1 1/4	1 1/2-12	1	1 13/16
PTR-4030	9430	4	30	1 3/4	40 1/4	77	3/16	3/4-16 SAE	1.015	2 5/16	2 7/16	1 7/8	3 3/4	1.06	1 1/4	1 1/2-12	1	1 13/16
PTR-4036	9436	4	36	1 3/4	46 1/4	83	3/16	3/4-16 SAE	1.015	2 5/16	2 7/16	1 7/8	3 3/4	1.06	1 1/4	1 1/2-12	1	1 13/16
PTR-4048	9448	4	48	1 3/4	58 1/4	109	3/16	3/4-16 SAE	1.015	2 5/16	2 7/16	1 7/8	3 3/4	1.06	1 1/4	1 1/2-12	1	1 13/16
PTR-5008	9508	5	8	2	20 1/4	67	1/4	7/8-16 SAE	1.265	2 3/4	2 5/8	2	4	1.06	1 1/4	1 1/2-12	1	2 1/2
PTR-5012	9512	5	12	2	24 1/4	75	1/4	7/8-16 SAE	1.265	2 3/4	2 5/8	2	4	1.06	1 1/4	1 1/2-12	1	2 1/2
PTR-5014	9514	5	14	2	26 1/4	80	1/4	7/8-16 SAE	1.265	2 3/4	2 5/8	2	4	1.06	1 1/4	1 1/2-12	1	2 1/2
PTR-5016A	9516	5	16	2	31 1/2	84	1/4	7/8-16 SAE	1.265	2 3/4	2 5/8	2	7 1/4	1.06	1 1/4	1 1/2-12	1	2 1/2
PTR-5018	9518	5	18	2	30 1/4	90	1/4	7/8-16 SAE	1.265	2 3/4	2 5/8	2	4	1.06	1 1/4	1 1/2-12	1	2 1/2
PTR-5020	9520	5	20	2	32 1/4	95	1/4	7/8-16 SAE	1.265	2 3/4	2 5/8	2	4	1.06	1 1/4	1 1/2-12	1	2 1/2
PTR-5024	9524	5	24	2	36 1/4	100	1/4	7/8-16 SAE	1.265	2 3/4	2 5/8	2	4	1.06	1 1/4	1 1/2-12	1	2 1/2
PTR-5030	9530	5	30	2	42 1/4	108	1/4	7/8-16 SAE	1.265	2 3/4	2 5/8	2	4	1.06	1 1/4	1 1/2-12	1	2 1/2
PTR-5036	9536	5	36	2	48 1/4	118	1/4	7/8-16 SAE	1.265	2 3/4	2 5/8	2	4	1.06	1 1/4	1 1/2-12	1	2 1/2
PTR-5048	9548	5	48	2	60 1/4	161	1/4	7/8-16 SAE	1.265	2 3/4	2 5/8	2	4	1.06	1 1/4	1 1/2-12	1	2 1/2

THE NOBLE LINE

2500 PSI DOUBLE ACTING TIE ROD CYLINDERS

HEAVY DUTY RODS - SHORT RETRACTED



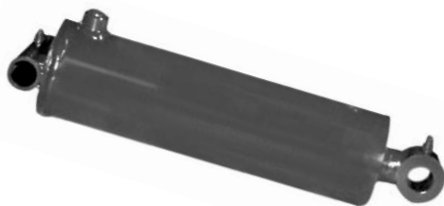
ORDER NO.	MFGR. NO.	BORE	STROKE	ROD DIA.	RETRACT. DIMEN.	SHIP WT.	B/C											
							A	PORT SIZE	D	E	F	G	H	J	K	M	N	O
PTR-3016	10616	3	16	1 3/8	26 1/4	29	3/16	3/4-16 SAE	1.015	2 7/16	2 7/16	1 13/16	3 3/4	1.06	1 1/4	1 1/8-12	1	1 5/16
PTR-3516	10716A	3 1/2	16	1 3/8	26 1/4	33	3/16	3/4-16 SAE	1.015	2 7/16	2 7/16	1 13/16	2 3/4	1.06	1 1/4	1 1/8-12	1	1 5/16
PTR-4016	19816	4	16	1 3/8	26 1/4	48	3/16	3/4-16 SAE	1.015	2 7/16	2 7/16	1 7/8	3 3/4	1.06	1 1/4	1 1/8-12	1	1 5/16

Welded Cylinders



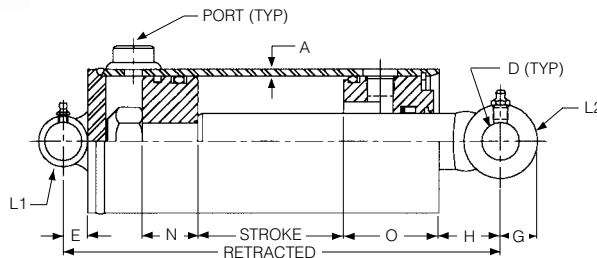
THE ROYAL LINE

2500 PSI DOUBLE ACTING CYLINDERS



FEATURES:

- Honed tubing
- Heavy duty welded construction
- Chromed, ground & polished piston rod
- Cast iron piston & gland
- Pin eye mounting on both ends
- Quad ring/backup washer & urethane wiper in gland
- O-ring/backup washers & cast iron ring for piston seals
- Truarc type gland retainer
- Standard color is red



ORDER NO.	MFGR. NO.	BORE	STROKE	ROD DIA.	RETRACT. DIMEN.	PORT SIZE	SHIP WT.	A	D	E	G	H	L ¹	L ²	N	O
PMW-2508	5408	2 1/2	8	1 3/8	16	3/8 NPTF	17	3/16	.760	9/16	3/4	2 3/16	3	1 3/8	1 1/4	2 1/2
PMW-2512	5412	2 1/2	12	1 3/8	20	3/8 NPTF	20	3/16	.760	9/16	3/4	2 3/16	3	1 3/8	1 1/4	2 1/2
PMW-2516	5416	2 1/2	16	1 3/8	24	3/8 NPTF	23	3/16	.760	9/16	3/4	2 3/16	3	1 3/8	1 1/4	2 1/2
PMW-2520	5420	2 1/2	20	1 3/8	28	3/8 NPTF	27	3/16	.760	9/16	3/4	2 3/16	3	1 3/8	1 1/4	2 1/2
PMW-2524	5424	2 1/2	24	1 3/8	32	3/8 NPTF	30	3/16	.760	9/16	3/4	2 3/16	3	1 3/8	1 1/4	2 1/2
PMW-2530	5430	2 1/2	30	1 3/8	38	3/8 NPTF	35	3/16	.760	9/16	3/4	2 3/16	3	1 3/8	1 1/4	2 1/2
PMW-2532	5432	2 1/2	32	1 3/8	40	3/8 NPTF	41	3/16	.760	9/16	3/4	2 3/16	3	1 3/8	1 1/4	2 1/2
PMW-2536	5436	2 1/2	36	1 3/8	44	3/8 NPTF	44	3/16	.760	9/16	3/4	2 3/16	3	1 3/8	1 1/4	2 1/2
PMW-2542	5442	2 1/2	42	1 3/8	50	3/8 NPTF	47	3/16	.760	9/16	3/4	2 3/16	3	1 3/8	1 1/4	2 1/2
PMW-3008	8308	3	8	1 1/2	16	1/2 NPTF	22	3/16	1.015	11/16	1	2 3/16	3 1/2	1 1/2	1 1/4	2 5/8
PMW-3012	8312	3	12	1 1/2	20	1/2 NPTF	26	3/16	1.015	11/16	1	2 3/16	3 1/2	1 1/2	1 1/4	2 5/8
PMW-3016	8316	3	16	1 1/2	24	1/2 NPTF	31	3/16	1.015	11/16	1	2 3/16	3 1/2	1 1/2	1 1/4	2 5/8
PMW-3020	8320	3	20	1 1/2	28	1/2 NPTF	35	3/16	1.015	11/16	1	2 3/16	3 1/2	1 1/2	1 1/4	2 5/8
PMW-3024	8324	3	24	1 1/2	32	1/2 NPTF	41	3/16	1.015	11/16	1	2 3/16	3 1/2	1 1/2	1 1/4	2 5/8
PMW-3030	8330	3	30	1 1/2	38	1/2 NPTF	46	3/16	1.015	11/16	1	2 3/16	3 1/2	1 1/2	1 1/4	2 5/8
PMW-3032	8332	3	32	1 1/2	40	1/2 NPTF	48	3/16	1.015	11/16	1	2 3/16	3 1/2	1 1/2	1 1/4	2 5/8
PMW-3036	8336	3	36	1 1/2	44	1/2 NPTF	52	3/16	1.015	11/16	1	2 3/16	3 1/2	1 1/2	1 1/4	2 5/8
PMW-3040	8340	3	40	1 1/2	48	1/2 NPTF	56	3/16	1.015	11/16	1	2 3/16	3 1/2	1 1/2	1 1/4	2 5/8
PMW-3042	8342	3	42	1 1/2	50	1/2 NPTF	59	3/16	1.015	11/16	1	2 3/16	3 1/2	1 1/2	1 1/4	2 5/8
PMW-3048	8348	3	48	1 1/2	56	1/2 NPTF	65	3/16	1.015	11/16	1	2 3/16	3 1/2	1 1/2	1 1/4	2 5/8
PMW-3508	5508	3 1/2	8	1 1/2	16	1/2 NPTF	26	3/16	1.015	11/16	1	1 11/16	4	1 1/2	1 1/2	2 5/8
PMW-3512	5512	3 1/2	12	1 1/2	20	1/2 NPTF	29	3/16	1.015	11/16	1	1 11/16	4	1 1/2	1 1/2	2 5/8
PMW-3516	5516	3 1/2	16	1 1/2	24	1/2 NPTF	34	3/16	1.015	11/16	1	1 11/16	4	1 1/2	1 1/2	2 5/8
PMW-3520	5520	3 1/2	20	1 1/2	28	1/2 NPTF	38	3/16	1.015	11/16	1	1 11/16	4	1 1/2	1 1/2	2 5/8
PMW-3524	5524	3 1/2	24	1 1/2	32	1/2 NPTF	44	3/16	1.015	11/16	1	1 11/16	4	1 1/2	1 1/2	2 5/8
PMW-3530	5530	3 1/2	30	1 1/2	38	1/2 NPTF	48	3/16	1.015	11/16	1	1 11/16	4	1 1/2	1 1/2	2 5/8
PMW-3532	5532	3 1/2	32	1 1/2	40	1/2 NPTF	52	3/16	1.015	11/16	1	1 11/16	4	1 1/2	1 1/2	2 5/8
PMW-3536	5536	3 1/2	36	1 1/2	44	1/2 NPTF	56	3/16	1.015	11/16	1	1 11/16	4	1 1/2	1 1/2	2 5/8
PMW-3540	5540	3 1/2	40	1 1/2	48	1/2 NPTF	60	3/16	1.015	11/16	1	1 11/16	4	1 1/2	1 1/2	2 5/8
PMW-3542	5542	3 1/2	42	1 1/2	50	1/2 NPTF	64	3/16	1.015	11/16	1	1 11/16	4	1 1/2	1 1/2	2 5/8
PMW-3548	5548	3 1/2	48	1 1/2	56	1/2 NPTF	70	3/16	1.015	11/16	1	1 11/16	4	1 1/2	1 1/2	2 5/8
PMW-4008	5608	4	8	2	17	1/2 NPTF	35	3/16	1.265	15/16	1 1/4	2	4 1/2	2	1 5/16	2 7/8
PMW-4012	5612	4	12	2	21	1/2 NPTF	41	3/16	1.265	15/16	1 1/4	2	4 1/2	2	1 5/16	2 7/8
PMW-4016	5616	4	16	2	25	1/2 NPTF	48	3/16	1.265	15/16	1 1/4	2	4 1/2	2	1 5/16	2 7/8
PMW-4020	5620	4	20	2	29	1/2 NPTF	56	3/16	1.265	15/16	1 1/4	2	4 1/2	2	1 5/16	2 7/8
PMW-4024	5624	4	24	2	33	1/2 NPTF	62	3/16	1.265	15/16	1 1/4	2	4 1/2	2	1 5/16	2 7/8
PMW-4030	5630	4	30	2	39	1/2 NPTF	72	3/16	1.265	15/16	1 1/4	2	4 1/2	2	1 5/16	2 7/8
PMW-4032	5632	4	32	2	41	1/2 NPTF	74	3/16	1.265	15/16	1 1/4	2	4 1/2	2	1 5/16	2 7/8
PMW-4036	5636	4	36	2	45	1/2 NPTF	80	3/16	1.265	15/16	1 1/4	2	4 1/2	2	1 5/16	2 7/8
PMW-4040	5640	4	40	2	49	1/2 NPTF	85	3/16	1.265	15/16	1 1/4	2	4 1/2	2	1 5/16	2 7/8
PMW-4042	5642	4	42	2	51	1/2 NPTF	92	3/16	1.265	15/16	1 1/4	2	4 1/2	2	1 5/16	2 7/8
PMW-4048	5648	4	48	2	57	1/2 NPTF	100	3/16	1.265	15/16	1 1/4	2	4 1/2	2	1 5/16	2 7/8
PMW-4060	5660	4	60	2	69	1/2 NPTF	120	3/16	1.265	15/16	1 1/4	2	4 1/2	2	1 5/16	2 7/8

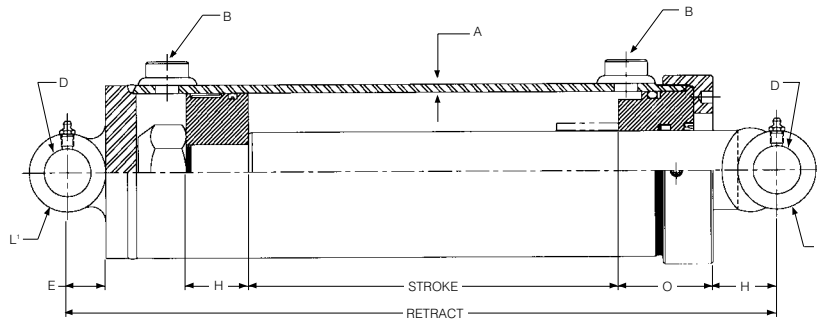


Welded Cylinders

FEATURES:

- Heavy duty welded construction
- 3000 PSI (2:1 safety factor for buckling on 36" stroke and less. Longer stroke consult factory)
- Steel gland cap retainer with lock screw
- 3/4 NPTF full-flow ports
- Standard color is highway yellow
- High grade gray iron piston & gland
- Precision skived tube for long seal life
- All steel spacer tube for bearing length on 48" or more of stroke
- Ground and polished chrome C-1045 steel piston rod for maximum life
- Heavy duty torqued locknut for piston retainer
- Polyurethane "U" cup and heavy duty wiper in gland. Crown seal with bearing rings on piston

THE GLADIATOR LINE 3000 PSI DOUBLE ACTING CYLINDERS



ORDER NO.	MFGR. NO.	BORE	STROKE	ROD DIA.	RETRACT. DIMEN.	SHIP WT.	A	B	PORT SIZE	D	E	H	L ¹	O	L ²
PMW-5060	21060	5	60	2 1/2	75	215	1/4	3/4	NPTF	1.515	1 1/4	1 7/8	5 3/4	2 15/16	4
PMW-6008	22008	6	8	3	19	100	1/4	3/4	NPTF	1.515	1 1/4	2	6 3/4	3 1/8	4
PMW-6012	22012	6	12	3	23	110	1/4	3/4	NPTF	1.515	1 1/4	2	6 3/4	3 1/8	4
PMW-6016	22016	6	16	3	27	125	1/4	3/4	NPTF	1.515	1 1/4	2	6 3/4	3 1/8	4
PMW-6024	22024	6	24	3	35	150	1/4	3/4	NPTF	1.515	1 1/4	2	6 3/4	3 1/8	4
PMW-6030	22030	6	30	3	41	170	1/4	3/4	NPTF	1.515	1 1/4	2	6 3/4	3 1/8	4
PMW-6036	22036	6	36	3	47	190	1/4	3/4	NPTF	1.515	1 1/4	2	6 3/4	3 1/8	4
PMW-6048	22048	6	48	3	61	240	1/4	3/4	NPTF	1.515	1 1/4	2	6 3/4	3 1/8	4
PMW-6054	22054	6	54	3	68	265	1/4	3/4	NPTF	1.515	1 1/4	2	6 3/4	3 1/8	4
PMW-6060	22060	6	60	3	75	290	1/4	3/4	NPTF	1.515	1 1/4	2	6 3/4	3 1/8	4

Welded Cylinders



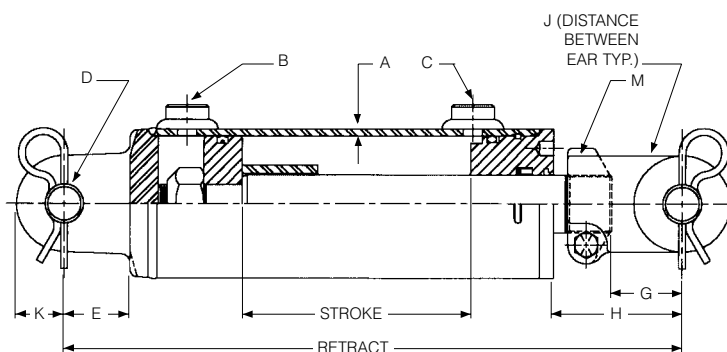
THE SWORD LINE

3000 PSI DOUBLE ACTING CYLINDERS



FEATURES:

- Skived, honed tubing
- Heavy duty welded construction
- Chromed, ground & polished piston rod will operate at full pressure through 16" stroke
- Cast iron piston, cast steel butt, gland & clevis
- Carboxilated nitrile u-cup & urethane wiper in gland, crown seal on piston
- Square ring gland retainer provides positive lock
- Pins & clips included
- Standard color is white
- Stroke control may be installed on 8" strokes



ORDER NO.	MFG. NO.	BORE	STROKE	ROD DIA.	RETRACT. DIMEN.	SHIP WT.	B/C PORT SIZE	D	E	G	H	J	K	M
PCW-2008	42008	2	8	1 1/8	20 1/4	10	3/16 3/8 NPTF	1.015	1 3/4	1 13/16	5 9/16	1 1/16	1	1 1/8 12
PCW-2010	42010	2	10	1 1/8	20 1/4	20	3/16 3/8 NPTF	1.015	1 3/4	1 13/16	3 9/16	1 1/16	1	1 1/8 12
PCW-2012	42012	2	12	1 1/8	22 1/4	22	3/16 3/8 NPTF	1.015	1 3/4	1 13/16	3 9/16	1 1/16	1	1 1/8 12
PCW-2016A	42016	2	16	1 1/8	31 1/2	25	3/16 3/8 NPTF	1.015	1 3/4	1 13/16	8 13/16	1 1/16	1	1 1/8 12
PCW-2020	42020	2	20	1 1/8	30 1/4	28	3/16 3/8 NPTF	1.015	1 3/4	1 13/16	3 9/16	1 1/16	1	1 1/8 12
PCW-2024	42024	2	24	1 1/8	34 1/4	31	3/16 3/8 NPTF	1.015	1 3/4	1 13/16	3 9/16	1 1/16	1	1 1/8 12
PCW-2508	42508	2 1/2	8	1 1/4	20 1/4	21	3/16 1/2 NPTF	1.015	1 3/4	1 13/16	5 9/16	1 1/16	1	1 1/8 12
PCW-2510	42510	2 1/2	10	1 1/4	20 1/4	22	3/16 1/2 NPTF	1.015	1 3/4	1 13/16	3 9/16	1 1/16	1	1 1/8 12
PCW-2512	42512	2 1/2	12	1 1/4	22 1/4	23	3/16 1/2 NPTF	1.015	1 3/4	1 13/16	3 9/16	1 1/16	1	1 1/8 12
PCW-2516A	42516	2 1/2	16	1 1/4	31 1/2	27	3/16 1/2 NPTF	1.015	1 3/4	1 13/16	8 13/16	1 1/16	1	1 1/8 12
PCW-2520	42520	2 1/2	20	1 1/4	30 1/4	31	3/16 1/2 NPTF	1.015	1 3/4	1 13/16	3 9/16	1 1/16	1	1 1/8 12
PCW-2524	42524	2 1/2	24	1 1/4	34 1/4	35	3/16 1/2 NPTF	1.015	1 3/4	1 13/16	3 9/16	1 1/16	1	1 1/8 12
PCW-3008	43008	3	8	1 3/8	20 1/4	23	3/16 1/2 NPTF	1.015	1 3/4	1 13/16	5 9/16	1 1/16	1 1/8	1 1/8 12
PCW-3010	43010	3	10	1 3/8	20 1/4	26	3/16 1/2 NPTF	1.015	1 3/4	1 13/16	3 9/16	1 1/16	1 1/8	1 1/8 12
PCW-3012	43012	3	12	1 3/8	22 1/4	28	3/16 1/2 NPTF	1.015	1 3/4	1 13/16	3 9/16	1 1/16	1 1/8	1 1/8 12
PCW-3016A	43016	3	16	1 3/8	31 1/2	33	3/16 1/2 NPTF	1.015	1 3/4	1 13/16	8 13/16	1 1/16	1 1/8	1 1/8 12
PCW-3020	43020	3	20	1 3/8	30 1/4	39	3/16 1/2 NPTF	1.015	1 3/4	1 13/16	3 9/16	1 1/16	1 1/8	1 1/8 12
PCW-3024	43024	3	24	1 3/8	34 1/4	43	3/16 1/2 NPTF	1.015	1 3/4	1 13/16	3 9/16	1 1/16	1 1/8	1 1/8 12
PCW-3508	43508	3 1/2	8	1 1/2	20 1/4	29	3/16 1/2 NPTF	1.015	1 3/4	1 13/16	5 9/8	1 1/16	1 1/4	1 1/2 12
PCW-3510	43510	3 1/2	10	1 1/2	20 1/4	31	3/16 1/2 NPTF	1.015	1 3/4	1 13/16	3 3/8	1 1/16	1 1/4	1 1/2 12
PCW-3512	43512	3 1/2	12	1 1/2	22 1/4	33	3/16 1/2 NPTF	1.015	1 3/4	1 13/16	3 3/8	1 1/16	1 1/4	1 1/2 12
PCW-3516A	43516	3 1/2	16	1 1/2	31 1/2	38	3/16 1/2 NPTF	1.015	1 3/4	1 13/16	8 3/8	1 1/16	1 1/4	1 1/2 12
PCW-3520	43520	3 1/2	20	1 1/2	30 1/4	43	3/16 1/2 NPTF	1.015	1 3/4	1 13/16	3 3/8	1 1/16	1 1/4	1 1/2 12
PCW-3524	43524	3 1/2	24	1 1/2	34 1/4	48	3/16 1/2 NPTF	1.015	1 3/4	1 13/16	3 3/8	1 1/16	1 1/4	1 1/2 12
PCW-4008	44008	4	8	1 3/4	20 1/4	40	3/16 1/2 NPTF	1.015	1 3/4	1 13/16	5 7/8	1 1/8	1 1/4	1 1/2 12
PCW-4010	44010	4	10	1 3/4	20 1/4	43	3/16 1/2 NPTF	1.015	1 3/4	1 13/16	3 3/8	1 1/8	1 1/4	1 1/2 12
PCW-4012	44012	4	12	1 3/4	22 1/4	45	3/16 1/2 NPTF	1.015	1 3/4	1 13/16	3 3/8	1 1/8	1 1/4	1 1/2 12
PCW-4016A	44016	4	16	1 3/4	31 1/2	54	3/16 1/2 NPTF	1.015	1 3/4	1 13/16	8 3/8	1 1/8	1 1/4	1 1/2 12
PCW-4020	44020	4	20	1 3/4	30 1/4	58	3/16 1/2 NPTF	1.015	1 3/4	1 13/16	3 3/8	1 1/8	1 1/4	1 1/2 12
PCW-4024	44024	4	24	1 3/4	34 1/4	60	3/16 1/2 NPTF	1.015	1 3/4	1 13/16	3 3/8	1 1/8	1 1/4	1 1/2 12
PCW-4030	44030	4	30	1 3/4	40 1/4	65	3/16 1/2 NPTF	1.015	1 3/4	1 13/16	3 3/8	1 1/8	1 1/4	1 1/2 12