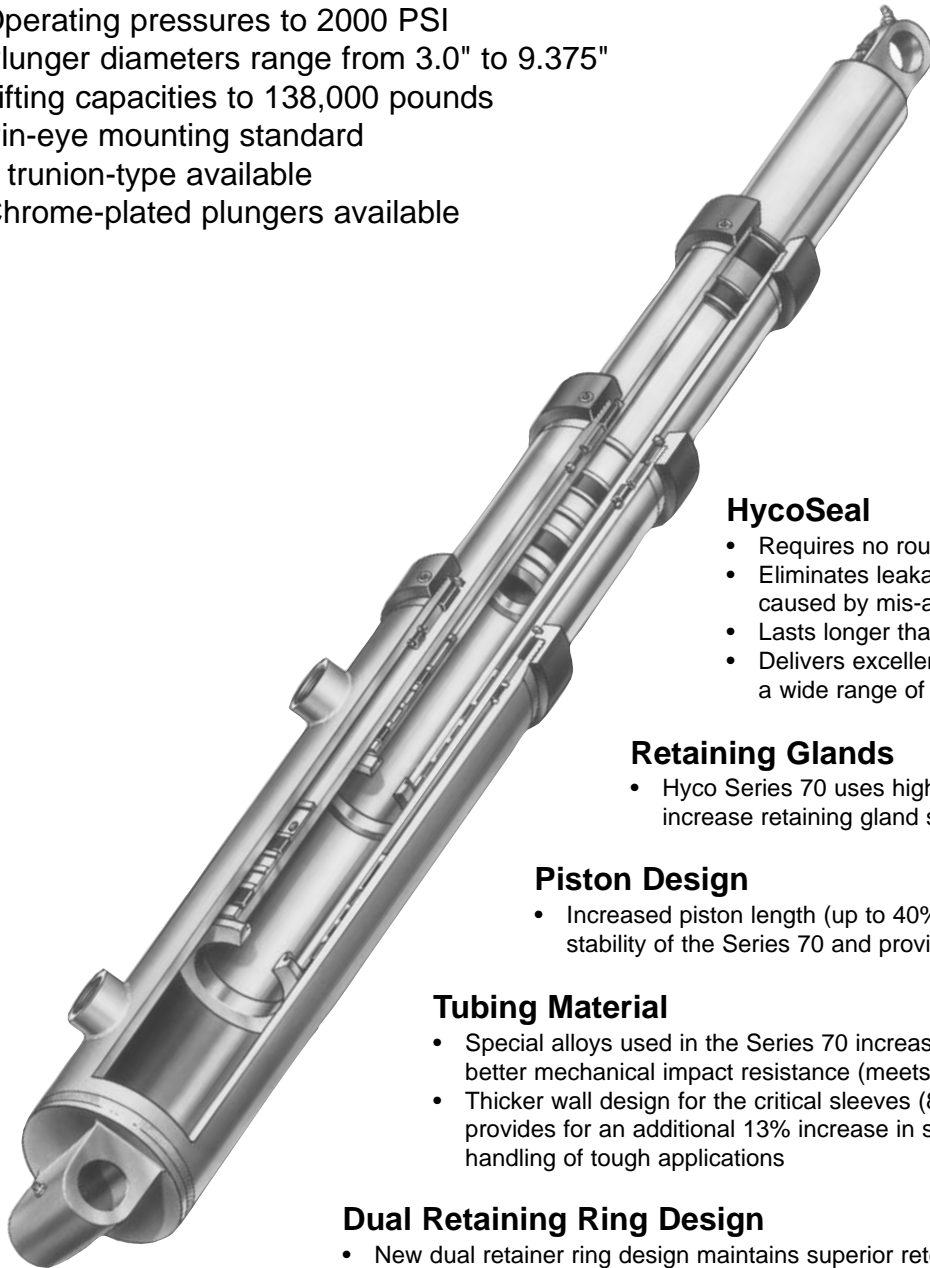


SINGLE ACTING TELESCOPIC CYLINDERS

GENERAL SPECIFICATIONS

- Operating pressures to 2000 PSI
- Plunger diameters range from 3.0" to 9.375"
- Lifting capacities to 138,000 pounds
- Pin-eye mounting standard
 - trunion-type available
- Chrome-plated plungers available



HycoSeal

- Requires no routine adjustment
- Eliminates leakage and mis-staging caused by mis-adjustment
- Lasts longer than V-style packing
- Delivers excellent performance through a wide range of temperatures (-30 F to +230 F)

Retaining Glands

- Hyco Series 70 uses high strength modular iron to increase retaining gland strength 23%

Piston Design

- Increased piston length (up to 40% more) increases the stability of the Series 70 and provides smoother operation.

Tubing Material

- Special alloys used in the Series 70 increases toughness of tubing for better mechanical impact resistance (meets DIN ST 52.3 standards)
- Thicker wall design for the critical sleeves (8-1/8" diameter and above) provides for an additional 13% increase in strength to aid in better handling of tough applications

Dual Retaining Ring Design

- New dual retainer ring design maintains superior retention strength while providing for easier assembly and disassembly

SINGLE ACTING TELESCOPIC CYLINDERS



Fluid Capacity: Volume To Fully Extend

Plunger Dia. (Inches)	Effective Area (Sq. Inches)	Load Capacity (Lbs. @ 2000 PSI)	Displacement (Gal./In. of Stroke)
3	7.07	14,140	.031
4	12.56	25,120	.054
5	19.63	9,260	.085
6	28.27	56,540	.122
7	38.48	76,960	.166
8.12	51.78	103,560	.224
8.25	53.46	106,920	.231
9.38	69.10	138,200	.299

Follow example to determine displacement of the complete cylinder **Example:** Model 824-200

8.12 in. plunger .224

7 in. plunger .166

6 in. plunger .122

5 in. plunger .085

.597

$\frac{.597 \times 200}{4} = 29.8$ Gallons to fully extend

4

MANUFACTURERS SERVICE MANUALS ARE AVAILABLE. CALL FOR DETAILS.

Features

GENERAL DATA

Operating pressures to 2000 psi. Plunger diameters range from 2" to 9.375". Lifting capacities to 138,200 lbs. Pin-eye mountings standard—trunion type available. Chrome-plated plungers available.

AUTOMATIC AIR BLEEDERS

Every standard Hycotel single-acting telescopic cylinder comes equipped with an automatic air bleeder. This completely eliminates time-consuming and potentially hazardous manual air bleeding operation.

GUIDE RINGS & RETAINING RINGS

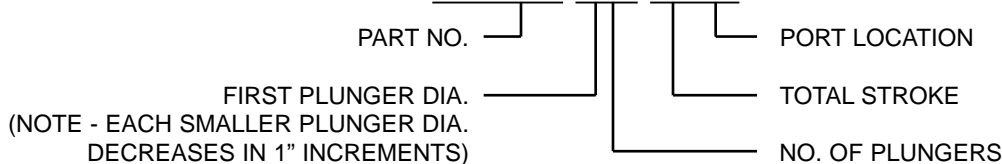
Hycotel® features replaceable plunger guide rings, designed and balanced to be well lubricated and made of specially compounded material for long wearing performance. The retainer rings work in conjunction with the piston design to be positively locked into stop position grooves when the cylinder is fully extended.

"DUAL-LIP" WIPER

This dual lip design wiper of Hytrel is a more efficient "dirt wiper." The dual lip provides an improved means of keeping dirt out.

Cylinder Identification

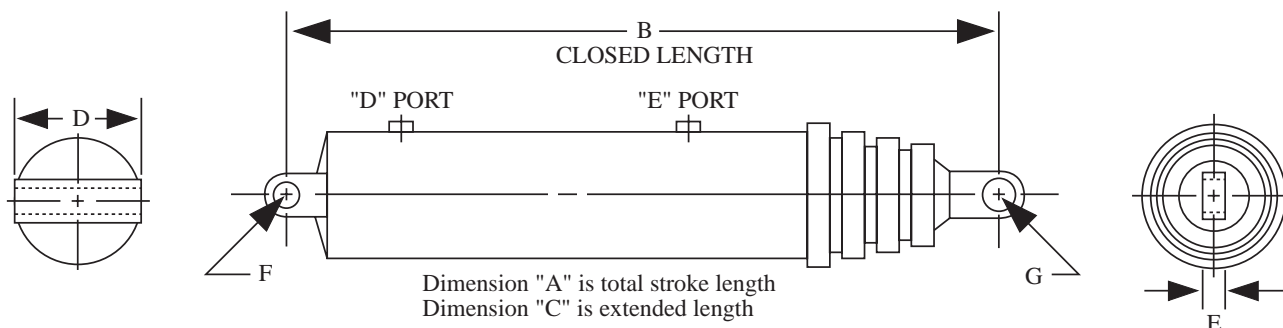
C70000-814-200D



NOTE: "D" and "E" suffix in Part No. represents a specific port location.

For dimensional data, consult our sales staff.

A "T" suffix in Part No. represents Trunion Mount.



DOUBLE ACTING TELESCOPIC CYLINDERS

Features

GENERAL DATA

Operating pressures to 2000 psi. Plunger diameters range from 3" to 9.12". Bore diameters from 3.50" to 9.75". Extend load capacities to 149,320 lbs. Retract load capacities to 18,520 lbs. Pin-eye mountings standard—trunion type available. Chrome-plated plungers also available.

PACKING – SEALS & BEARINGS

The adjustable seal and bearing cartridge (packing set) is proven through extensive laboratory and field testing. The outboard bearing rings are Teflon lubricated, providing reduced frictional drag resulting in reduced bearing wear.

GUIDE RINGS & RETAINING RINGS

The Hyco® telescopic cylinder features replaceable plunger guide rings designed and balanced to be well lubricated and made of specially compounded material for long-wearing performance. The retainer rings work in conjunction with the piston design to be positively locked into stop position grooves when the cylinder is fully extended.

“DUAL-LIP” WIPER

This dual lip design wiper of Hytrel is a more efficient means of keeping dirt out.



Fluid Capacity: Volume To Fully Extend

Plunger Dia. (Inches)	Effective Area (Sq. Inches)	Extend Load Capacity (Lbs. @ 2000 PSI)	Retract Load Capacity (Lbs @ 2000 PSI)	Displacement (Gal./In. of Stroke)
3	9.62	19,240	5,100	.042
4	15.90	31,800	6,660	.069
5	23.76	47,520	8,260	.103
6	33.18	66,360	9,820	.144
7	44.18	88,360	11,400	.191
8	56.74	113,480	12,960	.246
9.12	74.66	149,320	18,520	.323

Follow example to determine displacement of the complete cylinder

Example: Model 85-220

8" = .246

7" = .191

6" = .144

5" = .103

4" = .069

.753

$\frac{.753 \times 220}{5} = 33.13$ Gallons to fully extend

**MANUFACTURERS SERVICE MANUALS ARE AVAILABLE.
CALL FOR DETAILS.**

Cylinder Identification

C20000-85-220



(NOTE - EACH SMALLER PLUNGER DIA.
DECREASES IN 1" INCREMENTS)