

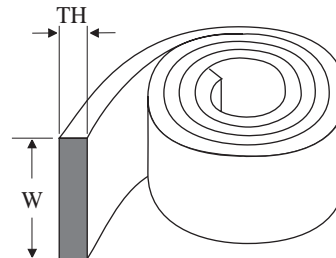
Flexible Guide Bearings

Ordering Information

Part Number: Prefix - W X TH

Example: MGB - 4 X 2.5

Sizes and material composition are in stock where prices are shown.



Styles



MGF

(stackable)

Material: Fabric Reinforced Polyester
 Temperature: -40 to +250° F
 Compressive Strength: 8,500 PSI



MGB

(not stackable)

Material: 40% Bronze Filled PTFE
 Temperature: -50 to +390° F
 Compressive Strength: 1,700 PSI

W	TH	MGF	MGB
4.0	2.5		\$ 7.07
5.5	2.5		17.89
5.6	2.5	\$ 10.08	
6.0	4.0		11.09
6.1	2.5		11.45
7.9	2.5		14.07
7.9	4.0		22.69
8.9	4.0		21.83
9.5	2.5		14.83
9.5	4.0		23.63
9.7	2.5	10.51	
10.0	2.0		13.65
11.8	4.0		24.02
13.0	2.5	12.49	
14.0	3.5		16.80
14.5	4.0		27.24
15.0	2.0		17.31
15.0	2.5	13.17	14.18
20.0	2.0		15.23
20.0	2.5	17.49	16.46
25.0	2.5	18.05	
50.0	2.0		22.00

Price listed is per foot of bearing material

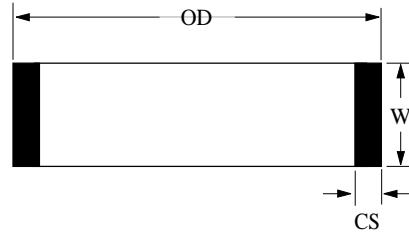
Wear Rings

Ordering Information

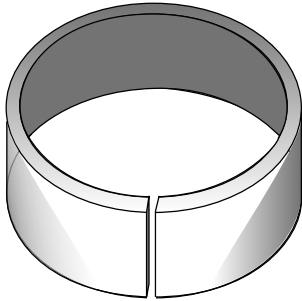
Part Number: Prefix - OD X W X CS




SC = SCARF CUT

Example: MWRB - 40 X 9.5 X 2.5



Sizes and styles are in stock where prices are shown.



Styles	
	MWR
Material:	Nylon
Temperature:	-40 to +250° F
Compressive Strength:	35,000 PSI
Tensile Strength:	27,000 PSI
	MWRB
Material:	Phenolic
Temperature:	-40 to +250° F
Compressive Strength:	34,000 PSI
Tensile Strength:	10,600 PSI
	MWRT
Material:	PTFE with 25% Carbon/Graphite Filler
Temperature:	-100 to +550° F
Compressive Strength:	1,700 PSI
Tensile Strength:	2,200 PSI

OD	W	CS	MWR	MWRB	MWRT
35.0	8.0	2.0	\$ 4.20		
35.0	15.0	1.5	14.01		
35.0	16.0	1.5-SC		\$ 2.89	
36.0	20.0	2.0		5.43	
39.0	25.0	2.0		8.66	
40.0	9.5	2.5		3.92	
40.0	12.0	2.0	9.41		
44.0	40.0	2.0		10.56	
45.0	9.5	2.0	4.60		
45.0	14.5	3.0	5.20	6.08	
45.0	20.0	2.0	9.91		
45.0	20.0	2.5		5.71	
46.0	20.0	3.0		6.08	
48.0	22.5	1.5	15.88		
49.0	25.0	2.0		4.56	
50.0	5.0	3.0	5.25		
50.0	9.5	2.0	5.78		
50.0	9.5	2.5	5.94		
50.0	10.0	2.0	4.86		
50.0	10.0	2.5		4.50	
50.0	14.5	2.0	5.27	4.92	
50.0	14.8	2.5	10.56		
50.0	15.0	2.5		5.00	
50.0	19.0	3.17	10.26		
50.0	20.0	2.5	5.80	6.17	
51.0	9.6	3.0	5.27		
51.0	22.5	3.0		8.75	
55.0	9.6	2.0	5.00		
55.0	10.5	3.0	5.32		
55.0	11.8	4.0			\$ 32.11
55.0	15.0	2.5		6.17	
55.0	15.5	3.0	6.09	8.75	
55.0	20.0	2.5	8.47		
56.0	12.0	3.0	11.72		
56.0	25.0	3.0		7.08	
60.0	10.0	2.5		5.00	
60.0	12.7	3.17	10.88		
60.0	20.0	2.5	6.67		
60.0	14.5	2.5	6.60	5.58	
61.0	9.5	3.0	6.50		
62.0	25.0	3.0		7.33	

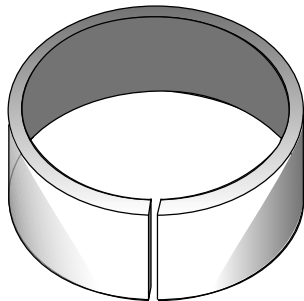
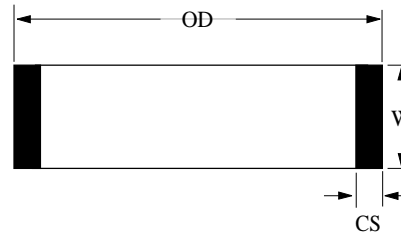
Wear Rings

Ordering Information

Part Number: Prefix - OD X W X CS

Example: MWRB - 40 X 9.5 X 2.5

Sizes and styles are in stock where prices are shown.



Styles

MWR

Material: Nylon
 Temperature: -40 to +250° F
 Compressive Strength: 35,000 PSI
 Tensile Strength: 27,000 PSI

MWRB

Material: Phenolic
 Temperature: -40 to +250° F
 Compressive Strength: 34,000 PSI
 Tensile Strength: 10,600 PSI

MWRT

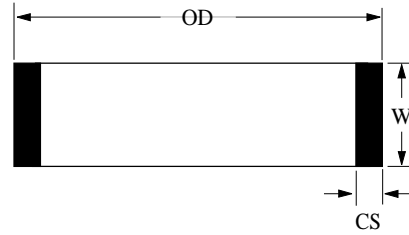
Material: PTFE with 25%
 Carbon/Graphite Filler
 Temperature: -100 to +550° F
 Compressive Strength: 1,700 PSI
 Tensile Strength: 2,200 PSI

OD	W	CS	MWR	MWRB	MWRT
62.0	10.0	2.0	\$ 6.65		
63.0	5.6	2.5	4.86		
63.0	9.7	2.5		\$ 4.74	
63.0	20.0	2.5	6.70		
65.0	15.5	3.0	6.44	7.56	
65.0	10.0	2.0	11.90		
65.0	19.7	2.5		6.92	
69.0	31.5	3.0-SC		6.28	
69.0	30.0	3.0	13.72		
70.0	5.5	2.5-B4			\$ 23.94
70.0	9.5	2.5-SC		3.33	
70.0	10.0	2.0	2.25		
70.0	10.0	3.12	2.73		
70.0	15.5	3.0	6.80	6.33	
70.0	19.5	3.0	8.68	9.50	
70.0	20.0	2.5	5.99	7.42	
70.0	30.0	2.5		9.50	
71.0	9.7	2.5	5.66		
75.0	5.4	2.5-SC	6.96		
75.0	9.5	3.15	12.20		
75.0	10.0	2.0	9.98		
75.0	10.0	2.5		6.00	
75.0	12.7	3.0	6.20		
75.0	15.0	2.0	10.92		
75.0	20.0	2.5-SC		7.50	
75.0	25.0	3.15	10.21		
75.0	30.0	2.5		10.42	
76.0	31.0	3.12-SC		9.78	
76.0	35.0	3.0-SC		7.25	
80.0	10.0	2.0	14.44		
80.0	10.0	2.5		3.33	
80.0	10.0	3.12	2.75		
80.0	11.8	4.0			39.80
80.0	13.0	2.5	6.18		
80.0	15.5	3.0	7.17	7.33	
80.0	19.5	3.0	7.18	8.50	
80.0	20.0	2.5	14.78	8.08	
80.0	20.0	2.5-SC		11.50	
80.0	25.0	3.0	12.48		
85.0	20.0	3.0-SC		5.17	
85.0	25.0	2.5	20.41		

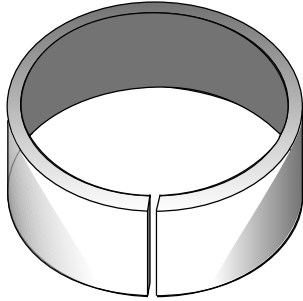
Wear Rings




Ordering Information

Part Number: Prefix - OD X W X CS
Example: MWRB - 40 X 9.5 X 2.5



Sizes and styles are in stock where prices are shown.



Styles	
	MWR
Material:	Nylon
Temperature:	-40 to +250° F
Compressive Strength:	35,000 PSI
Tensile Strength:	27,000 PSI
	MWRB
Material:	Phenolic
Temperature:	-40 to +250° F
Compressive Strength:	34,000 PSI
Tensile Strength:	10,600 PSI
	MWRT
Material:	PTFE with 25% Carbon/Graphite Filler
Temperature:	-100 to +550° F
Compressive Strength:	1,700 PSI
Tensile Strength:	2,200 PSI

OD	W	CS	MWR	MWRB	MWRT
85.0	25.0	2.5-SC		\$ 11.50	
85.0	25.0	3.0-SC		11.50	
85.0	25.4	3.17	\$ 9.33		
85.0	35.0	2.5		14.00	
85.0	49.5	3.0	16.20		
86.0	25.0	3.0	6.11		
86.0	40.0	3.0		17.00	
86.0	50.0	3.0	12.23		
90.0	4.4	3.8			\$ 18.89
90.0	6.0	4.0			12.72
90.0	10.0	3.0		7.25	
90.0	12.5	3.0	6.93	8.00	
90.0	12.5	4.5	16.81	8.33	
90.0	14.8	4.0			45.00
90.0	15.0	3.15	3.33		
90.0	24.6	3.0-SC		15.75	
90.0	25.0	3.0	10.04	11.67	
95.0	6.0	2.5		5.75	
95.0	6.0	4.0			13.24
95.0	7.9	2.5		6.25	
95.0	9.5	2.5		6.75	
95.0	12.5	4.5	17.05	17.78	
95.0	14.8	2.5		8.75	
100.0	5.9	4-B4			25.44
100.0	7.9	2.5		6.42	
100.0	9.5	2.5		7.00	
100.0	12.5	3.0	8.50	7.50	
100.0	14.8	2.5		8.58	
100.0	14.8	3.0		8.92	
100.0	15.0	3.0	10.04		
100.0	15.0	3.15	9.22		
100.0	25.0	3.0	10.04	12.50	
100.0	25.0	3.0-SC		12.50	
100.0	30.0	3.0		14.00	
105.0	6.0	2.5		6.08	
105.0	7.9	2.5		6.83	
105.0	9.5	2.5		7.33	
105.0	12.5	4.5	17.30	9.17	
105.0	14.8	2.5		8.83	
105.0	24.5	3.0	9.22	13.08	
110.0	5.9	4.0			27.77

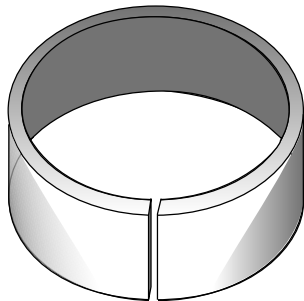
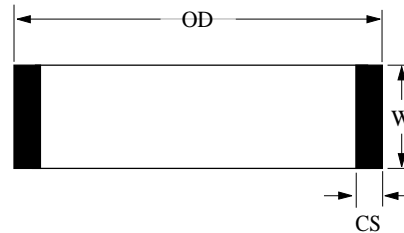
Wear Rings

Ordering Information

Part Number: Prefix - OD X W X CS

Example: MWRB - 40 X 9.5 X 2.5

Sizes and styles are in stock where prices are shown.



Styles

MWR

Material: Nylon
 Temperature: -40 to +250° F
 Compressive Strength: 35,000 PSI
 Tensile Strength: 27,000 PSI

MWRB

Material: Phenolic
 Temperature: -40 to +250° F
 Compressive Strength: 34,000 PSI
 Tensile Strength: 10,600 PSI

MWRT

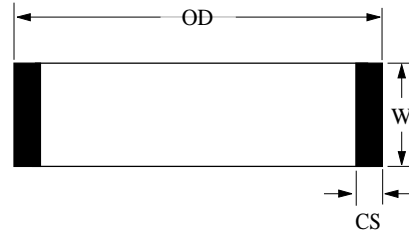
Material: PTFE with 25%
 Carbon/Graphite Filler
 Temperature: -100 to +550° F
 Compressive Strength: 1,700 PSI
 Tensile Strength: 2,200 PSI

OD	W	CS	MWR	MWRB	MWRT
110.0	5.9	4-B4			\$ 25.75
110.0	6.0	2.5		\$ 7.50	
110.0	7.9	2.5	\$ 6.83	6.83	
110.0	9.5	2.5		7.33	
110.0	12.5	3.0		7.58	
110.0	12.5	4.5	24.78		
110.0	14.8	2.5		9.00	
110.0	14.8	4.0			49.72
110.0	15.0	4.0		12.52	
110.0	25.0	3.0	12.80	13.50	
110.0	30.0	3.0		15.00	
110.0	30.0	3.0-SC	14.94		
115.0	6.0	4.0			14.20
115.0	7.9	2.5	6.83	6.92	
115.0	8.0	4.0			16.28
115.0	9.5	2.5	7.14	7.50	
115.0	14.8	2.5		9.33	
115.0	15.0	3.0	8.52		
115.0	15.0	4.5	29.20	11.00	
120.0	7.9	2.5	7.35	7.17	
120.0	8.0	4.0			16.50
120.0	9.5	2.5		8.00	
120.0	14.8	2.5		9.58	
120.0	14.8	3.0		9.67	
120.0	14.8	3.5		9.67	
120.0	15.0	4.5	30.92	12.42	
120.0	25.0	3.0		13.00	
120.0	30.0	3.0	15.52	15.92	
120.0	30.0	3.5		17.64	
125.0	7.9	2.5	7.61	7.50	
125.0	8.0	4.0			17.18
125.0	9.5	2.5		8.00	
125.0	14.8	2.5		9.33	
125.0	14.8	3.0		12.25	
125.0	14.8	3.5		12.25	
125.0	15.0	3.0	20.10		
125.0	20.0	3.0	12.08		
130.0	7.9	2.5	8.19	8.83	
130.0	8.0	4.0			17.50
130.0	9.5	2.5		9.92	
130.0	12.0	3.0	18.02		

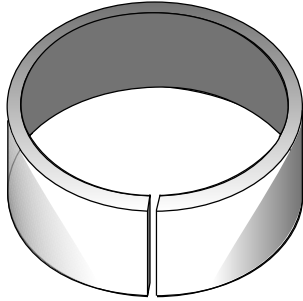
Wear Rings




Ordering Information

Part Number: Prefix - OD X W X CS
Example: MWRB - 40 X 9.5 X 2.5



Sizes and styles are in stock where prices are shown.



Styles	
	MWR
Material:	Nylon
Temperature:	-40 to +250° F
Compressive Strength:	35,000 PSI
Tensile Strength:	27,000 PSI
	MWRB
Material:	Phenolic
Temperature:	-40 to +250° F
Compressive Strength:	34,000 PSI
Tensile Strength:	10,600 PSI
	MWRT
Material:	PTFE with 25% Carbon/Graphite Filler
Temperature:	-100 to +550° F
Compressive Strength:	1,700 PSI
Tensile Strength:	2,200 PSI

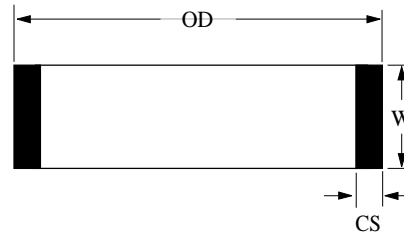
OD	W	CS	MWR	MWRB	MWRT
130.0	14.8	2.5		\$ 11.08	
130.0	14.8	3.5		12.00	
130.0	15.0	5.0	\$ 31.25	12.50	
130.0	20.0	4.0		23.00	
130.0	30.0	3.0		18.75	
130.0	30.0	3.5	23.51	19.25	
135.0	7.9	2.5	8.61	8.42	
135.0	8.0	4.0			\$ 17.82
135.0	9.5	2.5		10.88	
135.0	9.7	4.0			20.88
135.0	14.8	2.5		11.33	
135.0	14.8	3.5	10.13	15.13	
135.0	15.0	5.0	33.92	17.73	
140.0	7.9	2.5	8.93	8.67	
140.0	8.0	4.0			18.06
140.0	9.5	2.5	14.04	9.67	
140.0	9.5	2.5-sc		9.67	
140.0	9.7	4.0			21.56
140.0	14.8	2.5		11.50	
140.0	14.8	3.5		11.50	
140.0	17.5	6.0	38.33	16.67	
140.0	20.0	3.0	12.60		
140.0	20.0	3.5		15.17	
140.0	20.0	4.0		24.08	
140.0	35.0	3.5	7.40	24.25	
140.0	40.0	3.5		26.33	
140.0	45.0	3.5		28.08	37.78
145.0	7.9	2.5		10.44	
145.0	7.9	4.0			28.39
145.0	7.9	4.5			36.11
145.0	9.5	2.5	14.47	9.67	
145.0	9.5	3.5		10.25	
145.0	9.7	4.0			22.84
145.0	14.8	2.5		11.83	
145.0	14.8	3.5	10.50	12.75	
150.0	7.9	2.5		9.00	
150.0	8.0	4.0			19.94
150.0	9.5	2.5		9.75	
150.0	9.7	4.0			23.94
150.0	14.8	2.5		12.17	
150.0	14.8	3.5	11.29	13.17	
150.0	17.5	6.0	26.44		

Wear Rings

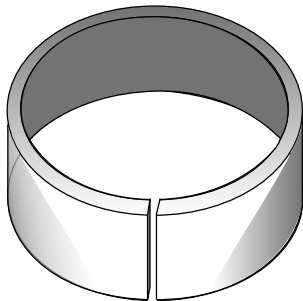
Ordering Information

Part Number: Prefix - OD X W X CS

Example: MWRB - 40 X 9.5 X 2.5



Sizes and styles are in stock where prices are shown.



Styles

MWR

Material: Nylon
 Temperature: -40 to +250° F
 Compressive Strength: 35,000 PSI
 Tensile Strength: 27,000 PSI

MWRB

Material: Phenolic
 Temperature: -40 to +250° F
 Compressive Strength: 34,000 PSI
 Tensile Strength: 10,600 PSI

MWRT

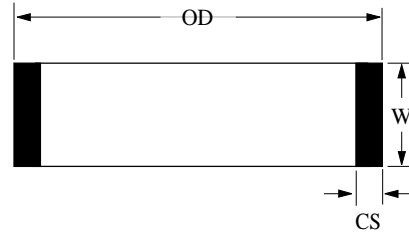
Material: PTFE with 25%
 Carbon/Graphite Filler
 Temperature: -100 to +550° F
 Compressive Strength: 1,700 PSI
 Tensile Strength: 2,200 PSI

OD	W	CS	MWR	MWRB	MWRT
150.0	35.0	3.5	\$ 34.84	\$ 25.50	
150.0	40.0	3.5		25.58	
155.0	7.9	2.5		10.83	
155.0	9.5	2.5		9.83	
155.0	14.8	2.5		12.33	
156.0	7.9	2.5		10.92	
160.0	7.9	2.5		34.83	
160.0	9.5	2.5		10.58	
160.0	9.7	4.0			\$ 24.50
160.0	14.8	2.5		15.05	
160.0	14.8	3.5		17.00	
160.0	20.0	3.0	11.45		
160.0	20.0	3.5	29.46	17.17	
160.0	20.0	6.0	42.71	20.50	
160.0	25.0	2.5		18.58	
160.0	40.0	3.5	36.32	31.00	
160.0	45.0	3.5		34.83	
165.0	7.9	2.5		9.92	
165.0	9.5	2.5		10.67	
165.0	14.8	2.5		13.33	
165.0	14.8	3.5		14.67	
165.0	15.0	4.0		15.00	
165.0	20.0	4.0		18.33	
170.0	7.9	2.5		10.00	
170.0	9.5	2.5		10.83	
170.0	9.5	3.0		11.67	
170.0	9.7	4.0			30.00
170.0	14.8	2.5		13.50	
170.0	14.8	3.5		18.56	
170.0	40.0	3.5		31.67	
175.0	40.0	4.0		31.83	
180.0	7.9	2.5		12.25	
180.0	9.5	2.5		12.25	
180.0	14.8	2.5		15.00	
180.0	14.8	3.5		19.46	
180.0	20.0	3.0	12.39		
180.0	22.0	4.0		22.58	
180.0	22.5	4.0	43.05		
180.0	22.5	6.0		26.50	
180.0	25.0	2.5		21.33	
180.0	40.0	4.0		35.92	
180.0	45.0	4.0	13.28	39.25	

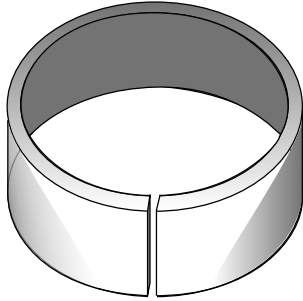
Wear Rings

Ordering Information




Part Number: Prefix - OD X W X CS
Example: MWRB - 40 X 9.5 X 2.5



Sizes and styles are in stock where prices are shown.



OD	W	CS	MWR	MWRB	MWRT
180.0	55.0	4.0		\$ 50.08	
185.0	22.5	6.0	\$ 48.34	27.58	
190.0	9.7	4.0			\$ 31.20
190.0	15.0	2.5		15.58	
190.0	45.0	4.0	50.33		
200.0	22.0	4.0	13.65	24.67	
200.0	22.5	6.0	44.83		
200.0	25.0	2.5		26.75	
200.0	40.0	4.0		39.25	
200.0	45.0	4.0	18.48	45.92	
224.0	45.0	4.0	51.35		
225.0	25.0	4.0	50.24		
225.0	25.0	6.0	56.82		
225.0	45.0	4.0		84.75	
225.0	50.0	4.0	50.40	42.22	
250.0	25.0	2.5		26.58	
250.0	27.5	6.0	37.34	46.00	
250.0	55.0	4.0	64.75	77.58	
260.0	27.5	6.0	96.60		
280.0	60.0	4.0	89.43		
300.0	25.0	2.5		33.25	
300.0	30.0	6.0	122.51		
320.0	25.0	2.5		36.42	
400.0	25.0	2.5		52.67	

<i>Styles</i>	
	<h3>MWR</h3> <p>Material: Nylon Temperature: -40 to +250° F Compressive Strength: 35,000 PSI Tensile Strength: 27,000 PSI</p>
	<h3>MWRB</h3> <p>Material: Phenolic Temperature: -40 to +250° F Compressive Strength: 34,000 PSI Tensile Strength: 10,600 PSI</p>
	<h3>MWRT</h3> <p>Material: PTFE with 25% Carbon/Graphite Filler Temperature: -100 to +550° F Compressive Strength: 1,700 PSI Tensile Strength: 2,200 PSI</p>

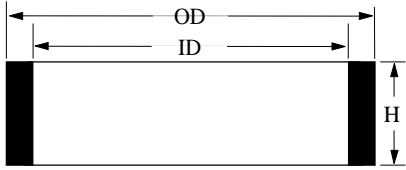
Rod Bushings


Ordering Information

Part Number: Prefix - ID X OD X W

Example: MRB - 50 X 56 X 18

Sizes are in stock where prices are shown.



<i>Styles</i>	
	MRB
Material:	Nylon
Temperature:	-40 to +250° F
Compressive Strength:	35,000 PSI
Tensile Strength:	27,000 PSI

ID	OD	W	MRB
50.0	56.0	18.0	\$ 5.83
50.0	56.0	28.0	5.95
56.0	62.0	28.0	6.24
63.0	69.0	28.0	6.66

***If you don't see the size you need,
give us a call...***

We are adding new sizes everyday!

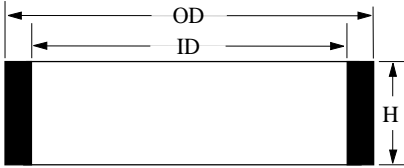


DU Rod Bushings

Ordering Information


Part Number: Prefix - ID X OD X W

Example: MDU - 40 X 45 X 30



Sizes are in stock where prices are shown.

Style MDU bushings, found in most Japanese excavators, wheel loaders, bull dozers, and lift trucks, are constructed from high performance, self lubricating material. Steel backed for high load capacity with a porous bronze interlay and a PTFE-lead overlay, the MDU bearing can withstand high operating speeds (2,000 FPM lubricated).

<i>Styles</i>	
	MDU
Lining:	Bronze
Overlay:	PTFE/Lead
Backing:	Steel
Temperature:	-325 to +536° F
Compressive Strength:	44,000 PSI

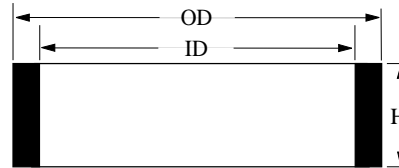
ID	OD	W	MDU
4.0	5.5	4.0	\$.94
4.0	5.5	6.0	.96
4.0	5.5	10.0	.98
5.0	7.0	5.0	.94
5.0	7.0	6.0	.96
5.0	7.0	8.0	.98
5.0	7.0	10.0	1.04
6.0	8.0	6.0	.96
6.0	8.0	10.0	1.04
8.0	10.0	8.0	.97
8.0	10.0	12.0	1.06
10.0	12.0	10.0	1.08
10.0	12.0	12.0	1.14
12.0	14.0	20.0	1.46
16.0	18.0	15.0	1.55
16.0	18.0	20.0	1.77
16.0	18.0	25.0	2.06
18.0	20.0	20.0	1.88
20.0	23.0	15.0	2.10
20.0	23.0	25.0	2.84
20.0	23.0	30.0	3.16
20.0	23.0	40.0	3.96
22.0	25.0	20.0	2.38
25.0	28.0	15.0	2.32
25.0	28.0	20.0	2.38
25.0	28.0	25.0	3.16
25.0	28.0	30.0	3.48
25.0	28.0	40.0	4.26
30.0	34.0	25.0	4.26
30.0	34.0	40.0	5.83
32.0	36.0	40.0	28.91
35.0	39.0	25.0	4.74
35.0	39.0	35.0	4.74
35.0	39.0	50.0	8.22
38.0	42.0	32.0	5.86
40.0	44.0	25.0	5.36
40.0	44.0	30.0	6.28
40.0	44.0	40.0	6.32
40.0	44.0	50.0	9.16
45.0	50.0	20.0	5.36
45.0	50.0	30.0	7.38
45.0	50.0	50.0	10.26

DU Rod Bushings

Ordering Information

Part Number: Prefix - ID X OD X W

Example: MDU - 40 X 45 X 30



Sizes are in stock where prices are shown.

Style MDU bushings, found in most Japanese excavators, wheel loaders, bull dozers, and lift trucks, are constructed from high performance, self lubricating material. Steel backed for high load capacity with a porous bronze interlay and a PTFE-lead overlay, the MDU bearing can withstand high operating speeds (2,000 FPM lubricated).

Styles



MDU

Lining: Bronze
 Overlay: PTFE/Lead
 Backing: Steel
 Temperature: -325 to +536° F
 Compressive Strength: 44,000 PSI

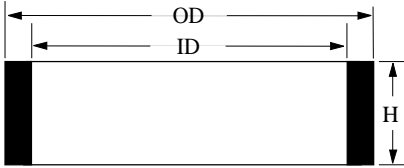
ID	OD	W	MDU
50.0	55.0	12.0	\$ 4.74
50.0	55.0	25.0	7.46
50.0	55.0	30.0	8.94
50.0	55.0	40.0	11.06
50.0	55.0	50.0	12.32
50.0	55.0	60.0	14.38
55.0	60.0	12.0	4.90
55.0	60.0	25.0	7.90
55.0	60.0	30.0	10.56
55.0	60.0	40.0	11.22
55.0	60.0	50.0	13.44
55.0	60.0	60.0	15.64
60.0	65.0	30.0	10.74
60.0	65.0	35.0	11.86
60.0	65.0	40.0	13.94
60.0	65.0	50.0	15.48
60.0	65.0	70.0	20.22
65.0	70.0	15.0	7.28
65.0	70.0	30.0	12.50
65.0	70.0	35.0	13.00
65.0	70.0	40.0	14.78
65.0	70.0	60.0	19.12
70.0	75.0	15.0	11.66
70.0	75.0	20.0	12.42
70.0	75.0	30.0	14.12
70.0	75.0	40.0	17.00
70.0	75.0	50.0	18.64
75.0	80.0	30.0	15.62
75.0	80.0	35.0	16.20
75.0	80.0	40.0	17.84
75.0	80.0	50.0	19.60
75.0	80.0	60.0	23.70
80.0	85.0	30.0	18.00
80.0	85.0	40.0	19.56
80.0	85.0	50.0	22.28
80.0	85.0	60.0	25.44
85.0	90.0	30.0	20.00
85.0	90.0	40.0	21.34
85.0	90.0	50.0	23.22
85.0	90.0	70.0	30.00
90.0	95.0	20.0	18.34
90.0	95.0	30.0	19.28

DU Rod Bushings

Ordering Information


Part Number: Prefix - ID X OD X W

Example: MDU - 40 X 45 X 30



Sizes are in stock where prices are shown.

Style MDU bushings, found in most Japanese excavators, wheel loaders, bull dozers, and lift trucks, are constructed from high performance, self lubricating material. Steel backed for high load capacity with a porous bronze interlay and a PTFE-lead overlay, the MDU bearing can withstand high operating speeds (2,000 FPM lubricated).

<i>Styles</i>	
	MDU
Lining:	Bronze
Overlay:	PTFE/Lead
Backing:	Steel
Temperature:	-325 to +536° F
Compressive Strength:	44,000 PSI

ID	OD	W	MDU
90.0	95.0	35.0	\$ 22.66
90.0	95.0	40.0	24.62
90.0	95.0	45.0	25.64
90.0	95.0	60.0	30.82
95.0	100.0	30.0	21.72
95.0	100.0	40.0	25.56
95.0	100.0	50.0	27.50
95.0	100.0	100.0	44.50
100.0	105.0	20.0	16.74
100.0	105.0	30.0	24.00
100.0	105.0	35.0	29.76
100.0	105.0	40.0	30.00
100.0	105.0	50.0	34.28
100.0	105.0	60.0	35.70
105.0	110.0	35.0	25.60
105.0	110.0	40.0	27.00
105.0	110.0	50.0	32.70
105.0	110.0	60.0	36.82
110.0	115.0	40.0	30.34
110.0	115.0	45.0	34.12
110.0	115.0	50.0	48.66
110.0	115.0	55.0	125.00
110.0	115.0	60.0	52.00
115.0	120.0	35.0	28.92
115.0	120.0	45.0	35.40
115.0	120.0	50.0	38.24
115.0	120.0	70.0	48.20
120.0	125.0	20.0	28.28
120.0	125.0	40.0	37.44
120.0	125.0	50.0	43.14
120.0	125.0	60.0	47.72
125.0	130.0	50.0	44.24
125.0	130.0	70.0	53.24
130.0	135.0	40.0	42.98
130.0	135.0	50.0	45.66
130.0	135.0	60.0	199.87
130.0	135.0	80.0	116.35
135.0	140.0	60.0	56.00
135.0	140.0	80.0	66.36
140.0	145.0	50.0	61.20
140.0	145.0	60.0	62.56
140.0	145.0	70.0	67.94

DU Rod Bushings

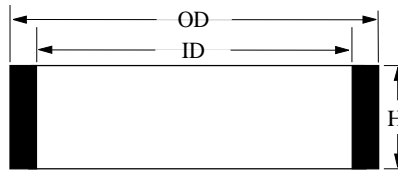
Ordering Information

Part Number: Prefix - ID X OD X W

Example: MDU - 40 X 45 X 30

Sizes are in stock where prices are shown.

Style MDU bushings, found in most Japanese excavators, wheel loaders, bull dozers, and lift trucks, are constructed from high performance, self lubricating material. Steel backed for high load capacity with a porous bronze interlay and a PTFE-lead overlay, the MDU bearing can withstand high operating speeds (2,000 FPM lubricated).



ID	OD	W	MDU
140.0	145.0	80.0	\$ 73.30
150.0	155.0	40.0	61.38
160.0	165.0	40.0	65.84
160.0	165.0	50.0	68.26

Styles



MDU

Lining: Bronze
 Overlay: PTFE/Lead
 Backing: Steel
 Temperature: -325 to +536° F
 Compressive Strength: 44,000 PSI

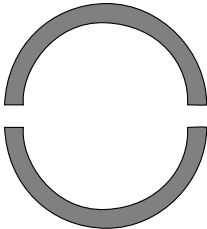
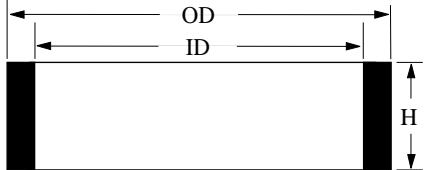
Piston Bushings

Ordering Information


Part Number: Prefix - ID X OD X H

Example: MBB - 50 X 56 X 18

Sizes are in stock where prices are shown.



ID	OD	H	MBB
60.0	80.0	19.6	\$ 28.74
70.0	90.0	24.6	30.92
85.0	105.0	24.6	35.04

<i>Styles</i>	
	MBB
Material:	660 Bronze