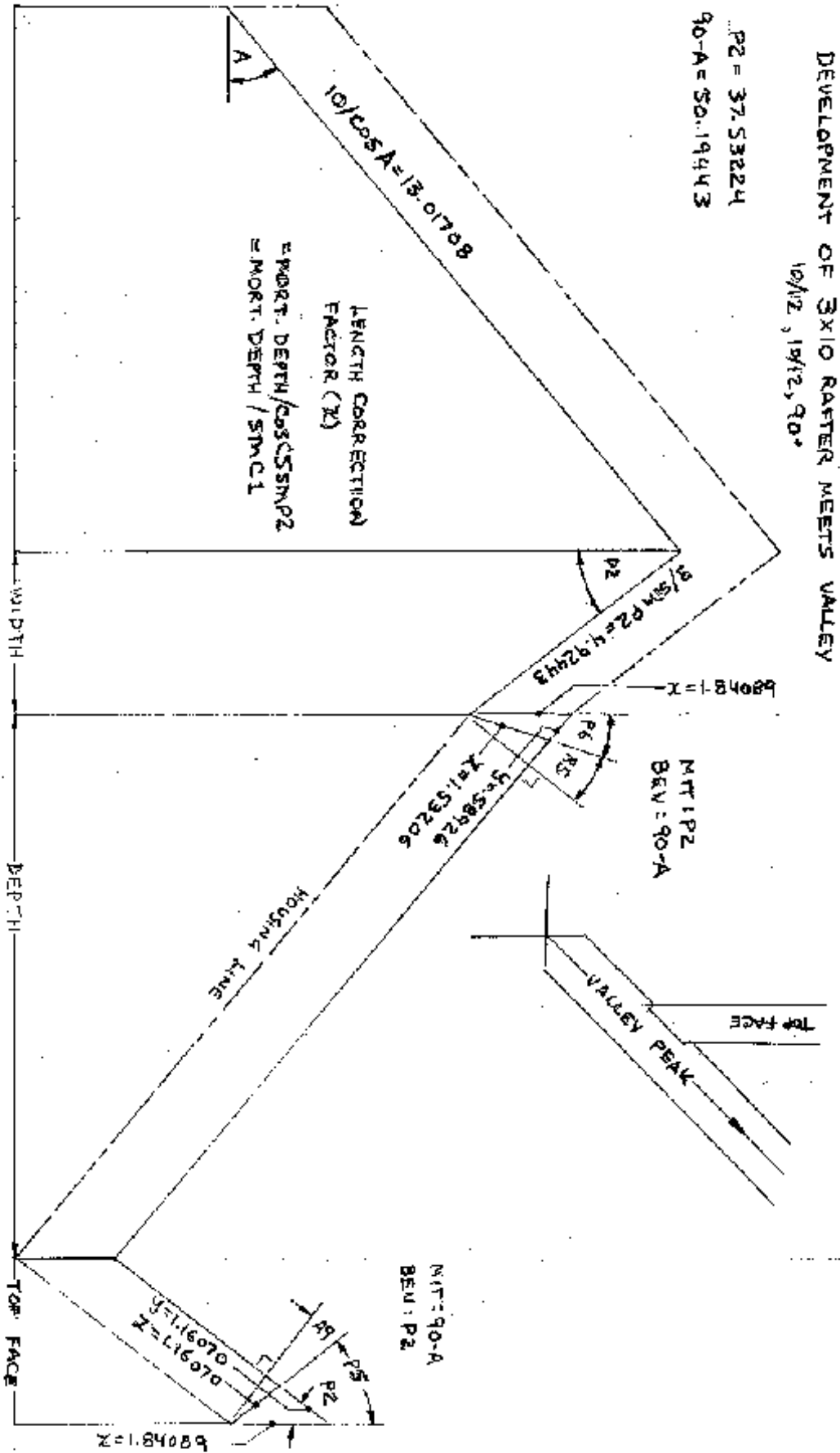


DEVELOPMENT OF 3X10 RAFTER MEETS VALLEY

10/12, 19/12, 90°

P2 = 37.53224  
90-A = 50.19443

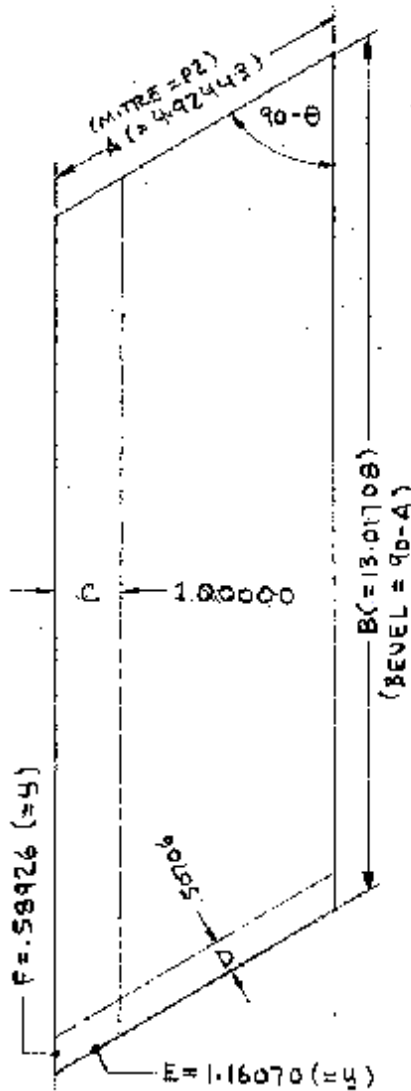


SKERNEL PROGRAM: ENTER: MIT: 50.19443

REU: 37.53224  
SD: 1  
DISPLAY: X: 1.84089  
Y: 1.16070  
Z: 1.16070

MTP2: 37.53224  
BEV: 50.19443  
SD: 1  
DISPLAY: X: 1.84089  
Y: .58926  
Z: 1.53206

DEVELOPMENT OF 3X10 RAFTER MEETS VALLEY



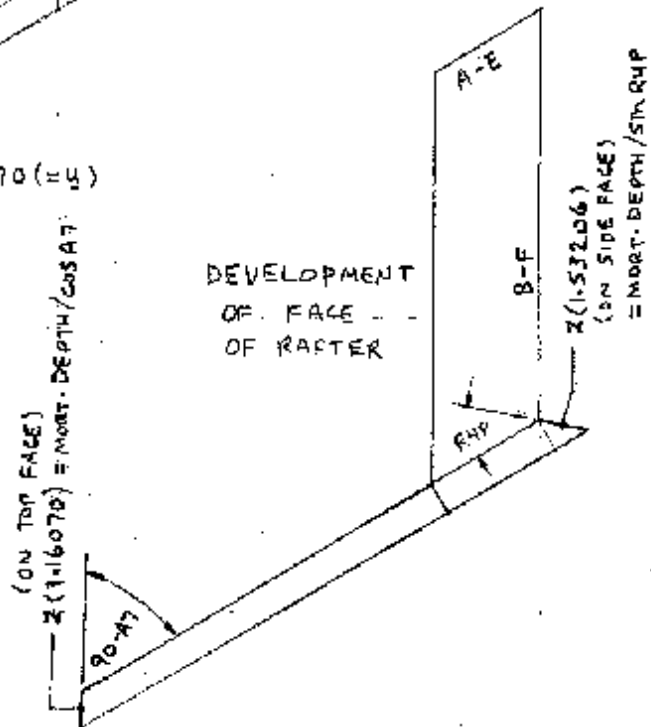
LAYOUT FOR SQUARE CUTS ON COMPOUND FACE OF RAFTER

BEVEL ANGLES PROGRAM  
 ENTER: 37.53224 (MIT)  
 SD.19443 (BEU)  
 WIDTH: 3  
 DEPTH: 10  
 MORT. DEPTH: 1  
 DISPLAY: A: 4.92443  
 B: 13.01708  
 C: 1.00000  
 D: 1.16070  
 E: 1.16070 (= 4)  
 F: 5.8926 (= 4)

$C = (\text{MORT. DEPTH}) \times \tan \theta$   
 $D = (\text{MORT. DEPTH}) \times \tan \phi$

(ON TOP FACE)  
 $Z(1.16070) = \text{MORT. DEPTH} / \cos \phi$

DEVELOPMENT OF FACE OF RAFTER

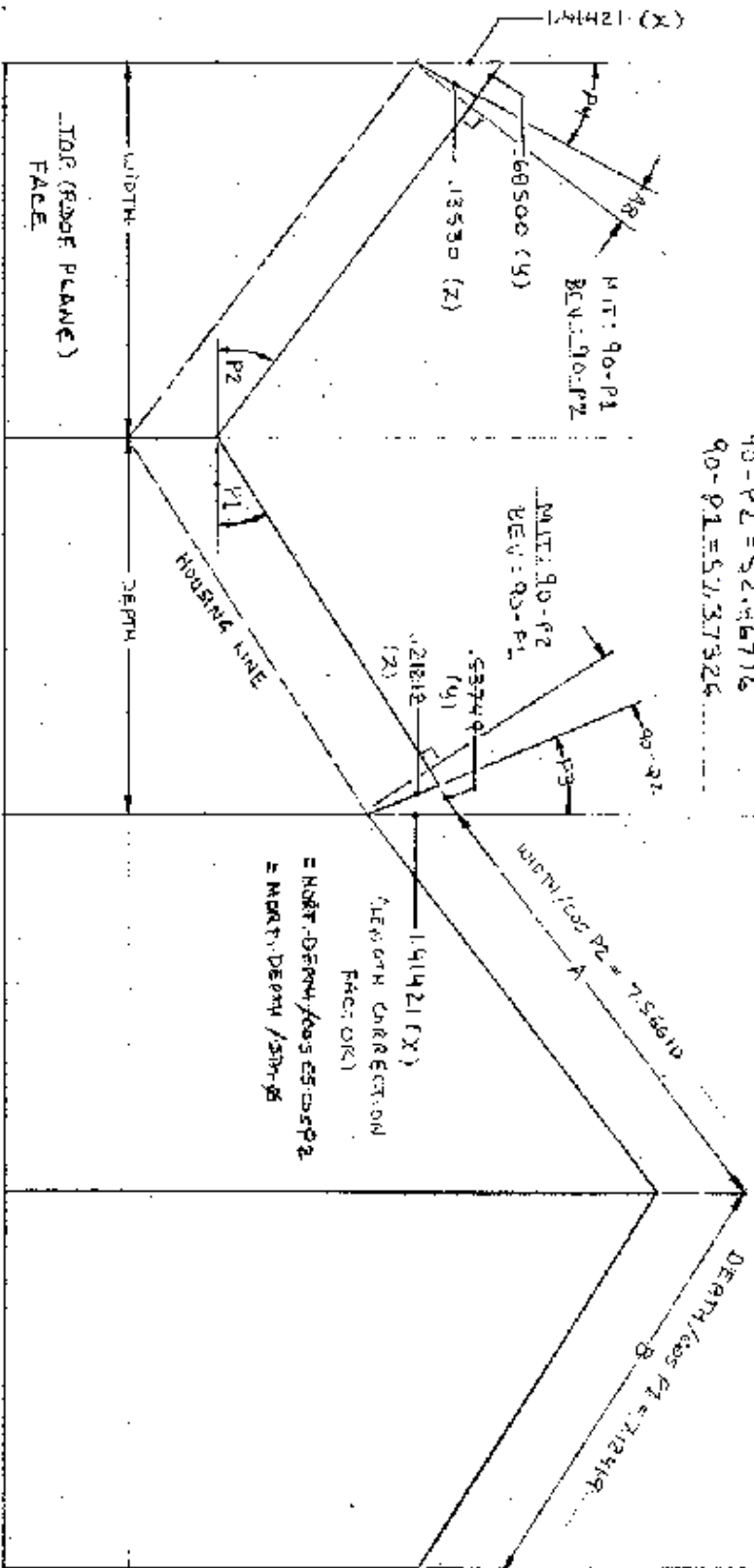


DEVELOPMENT OF 6 X 6 PURLIN INSETS VALLEY

10/12, 10/12, 90°

90-P2 = 52,46776

90-P1 = 57,37326



SKERNEL PROGRAM : ENTER : MIT : 57,37326

BEU : 52,46776

SDI : 1

DISPLAY : X:1,41421

Y: 60500  
Z: 13530

SIDE FACE

MIT : 52,46776

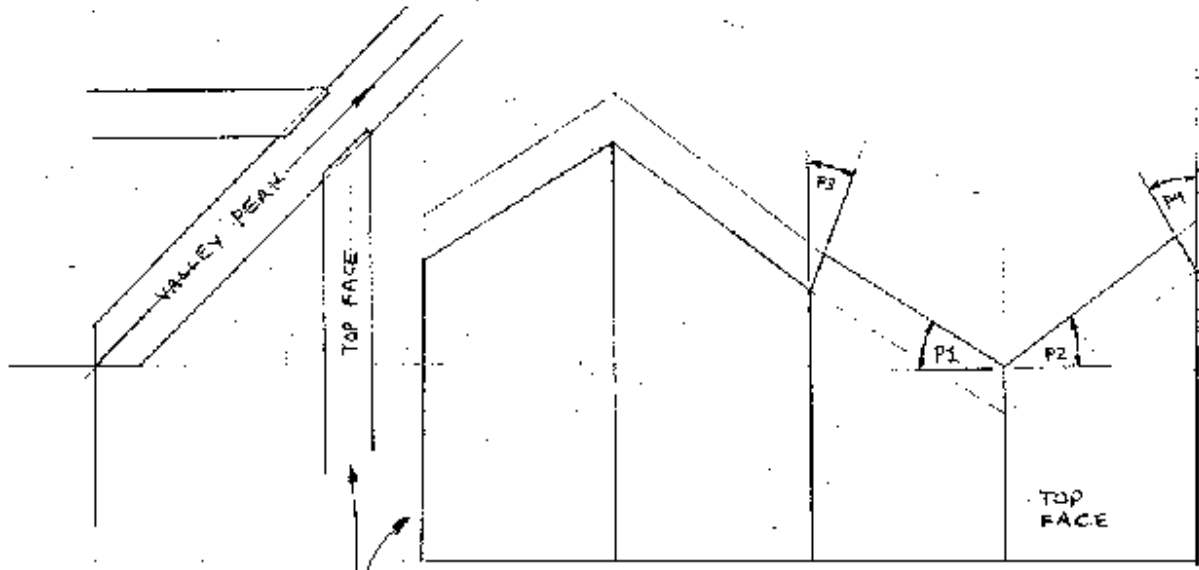
BEU : 57,37326

SDI : 1

X: 1,41421

Y: 53749  
Z: 121212

# DEVELOPMENT OF 6x6 PURLIN MEETS VALLEY



## DEVELOPMENT OF OPPOSITE HAND PURLIN

